

CERTIFIED LAND CORNER RECORDATION
(REFERENCE FSM 7153.53)

DESCRIPTION OF CORNER EVIDENCE FOUND, AND ORIGINAL RECORD (IF KNOWN)

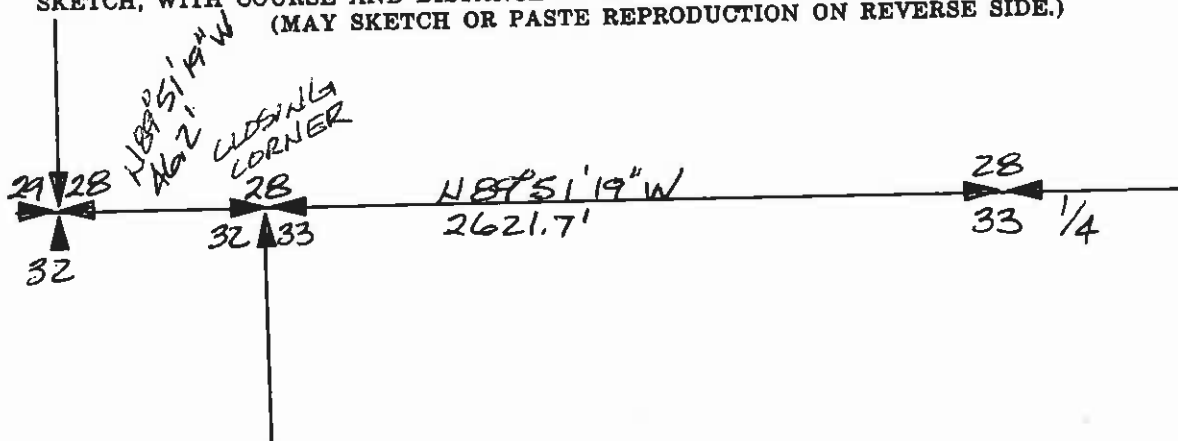
NO ORIGINAL EVIDENCE FOUND
(A 3" SQUARE POST, 4' LONG)

DESCRIPTION OF MONUMENT AND ACCESSORIES ESTABLISHED
TO PERPETUATE THE ORIGINAL LOCATION OF THIS CORNER:

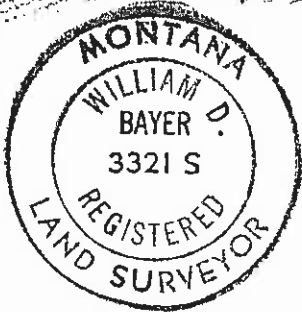
Date of work: 7/96

SET 5/8" REBAR W/ ALUMINUM CAP
AS MARKED BELOW. TOOK 2 BEARING
TREES: 7" FIR BEARS 10.7', S50°W;
6" FIR BEARS N25°E 4.0'

SKETCH, WITH COURSE AND DISTANCE TO ADJACENT CORNERS IF DETERMINED IN THIS SURVEY.
(MAY SKETCH OR PASTE REPRODUCTION ON REVERSE SIDE.)



Surveyor's Seal



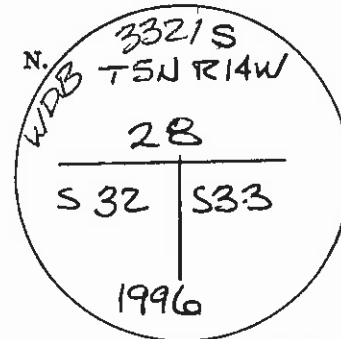
I, HANK BOHRNSEN
certify that the information shown herein is true and
correct.

Hank Bohrsen
Signature of Ground Party Chief

I,
certify that I have carefully performed or reviewed the
work done on the diagrammed corner as reported on this
recording form and approve the same.

William D. Bayer
Signature of Surveyor

DIAGRAM OF CORNER:



= Corner recorded on the sheet

3321 S
Registration Number

Office of Clerk and Recorder, County of Grant

This "corner record" was filed for record on the 23rd day of June, 1997, was noted on the cross-index plat and assigned page No. 35339, in book No. 35339

Jo Bayer
County Official

Cross Index No. V-9 T 5N R 14W Me

S 32, 33, 28