

CERTIFIED LAND CORNER RECORDATION

DESCRIPTION OF CORNER EVIDENCE FOUND, AND ORIGINAL RECORD (IF KNOWN)

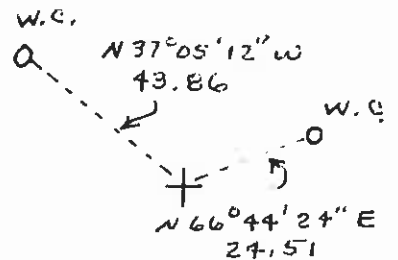
No Marker Found - falls in county Lane
 Used B.N. Railroad Right of Way Map as
 best available evidence to re-establish corner
 RR Sta 1012+45.0 - \angle 75°33' Rt. - west
 1263.0 Ft. Lt. (East) = \angle 107°27' Lt. - East.

**DESCRIPTION OF MONUMENT AND ACCESSORIES ESTABLISHED
 TO PERPETUATE THE ORIGINAL LOCATION OF THIS CORNER:**

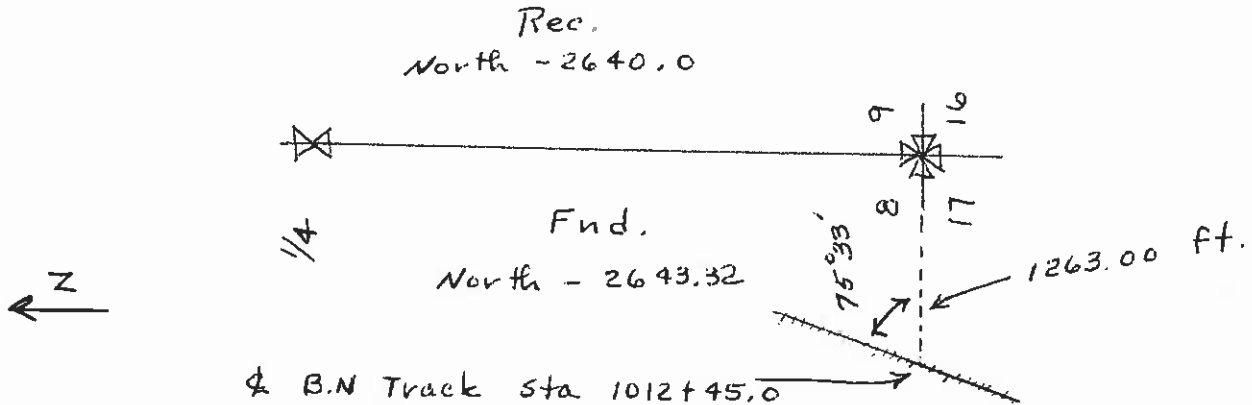
Set New 5/8" x 24" Rebar with 2" Alum. Survey Cap - stamped R. Masters - R.L.S. 821 S - 1979
 Date of work: 9-26-79
 marked buried 6" in county road.

T6N
 8 | 9
 17 | 16
 R9W

set 5/8" x 24" rebars with 1 1/2" Alum Survey Caps - stamped masters 821 S
 for witness corners
 Marked V.V.C. \angle W.C.
 43.86 \angle 24.51



**SKETCH, WITH COURSE AND DISTANCE TO ADJACENT CORNERS IF DETERMINED IN THIS SURVEY.
 (MAY SKETCH OR PASTE REPRODUCTION ON REVERSE SIDE.)**



Surveyor's Seal

I, RAY G. MASTERS
 certify that the information shown herein is true and correct.

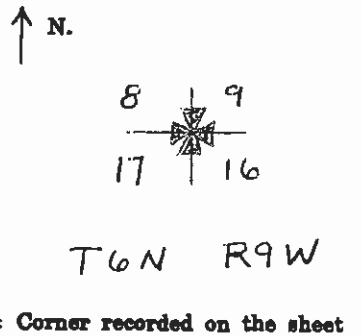
Signature of Ground Party Chief

I, RAY G. MASTERS
 certify that I have carefully performed or reviewed the work done on the diagrammed corner as reported on this recordation form and approve the same.

Ray G. Masters
 Signature of Surveyor

821 S
 Registration Number

DIAGRAM OF CORNER:



Office of Clerk and Recorder, County of Powell
 This "corner record" was filed for record on the 21st day of November, 1979, was noted on the cross-index plat and is assigned page No. _____, in book No. _____

County Official
 Cross Index No. J-9 T. 6N R. 9W Mer.
 Instrument # 104136