

CERTIFIED LAND CORNER RECORDATION

DESCRIPTION OF CORNER EVIDENCE FOUND, AND ORIGINAL RECORD (IF KNOWN)

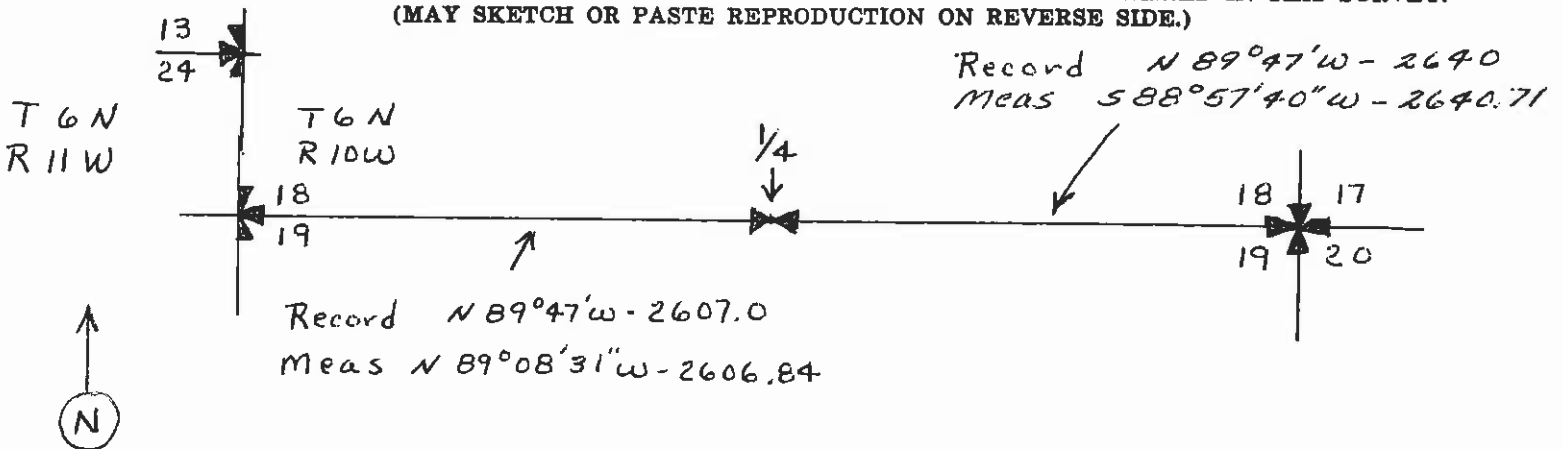
1868 Field Notes — set 1/4 Sec. Cor. a granite stone 20 x 18 x 10 ins. with marked stone pits (4c?) as per instructions

Found weathered granite set stone approx 20 x 18 x 10 ins set 4 ins. in rocky ground — forest service location poster on 8" fir — 6 ft NE of stone.

DESCRIPTION OF MONUMENT AND ACCESSORIES ESTABLISHED TO PERPETUATE THE ORIGINAL LOCATION OF THIS CORNER:

Replaced set stone with new Date of work: 6-11-79
 5/8" x 24" rebar with 2 in. dia Alum. Survey Cap
 Stamped R. Masters — R.L.S. 821 S — 1979
 marked $\frac{1/4}{18}$ with restored mound of stones adj. NW of Cor.
 $\frac{19}{19}$
 T6N R10W

SKETCH, WITH COURSE AND DISTANCE TO ADJACENT CORNERS IF DETERMINED IN THIS SURVEY. (MAY SKETCH OR PASTE REPRODUCTION ON REVERSE SIDE.)



Surveyor's Seal

I, RAY G. MASTERS
 certify that the information shown herein is true and correct.

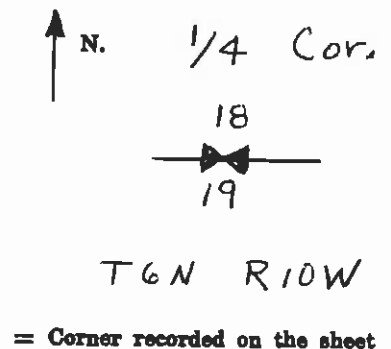
Signature of Ground Party Chief

I, RAY G. MASTERS
 certify that I have carefully performed or reviewed the work done on the diagrammed corner as reported on this recordation form and approve the same.

Ray G. Masters
 Signature of Surveyor

821 S
 Registration Number

DIAGRAM OF CORNER:



Office of Clerk and Recorder, County of Powell

This "corner record" was filed for record on the 21st day of September 1979, was noted on the cross-index plat and is assigned page No. _____, in book No. _____

County Official

Instrument # 103660 Cross Index No. 4-3 T. 6N R. 10W Mer.