

**CERTIFIED LAND CORNER RECORDATION**

DESCRIPTION OF CORNER EVIDENCE FOUND, AND ORIGINAL RECORD (IF KNOWN)

Record: 40.00 ch.; Set 1/4 Sec. Cor. a post in mound of earth with pits.

Found: No evidence of post, mound or pits.

DESCRIPTION OF MONUMENT AND ACCESSORIES ESTABLISHED TO PERPETUATE THE ORIGINAL LOCATION OF THIS CORNER:

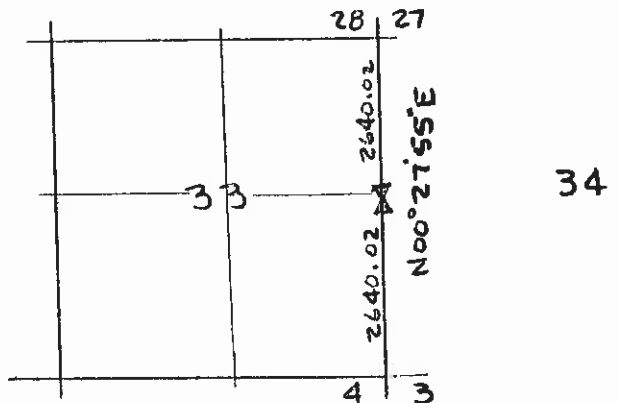
Date of work: 7-5-78

Set 2 1/2" Brass Cap on 2" pipe 24" long at record distance for Sec. Cor. common to 33-34-3-4. A fence post bears west 1.0' with yellow cor. tag



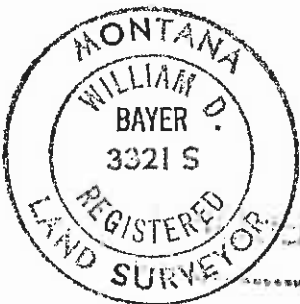
SKETCH, WITH COURSE AND DISTANCE TO ADJACENT CORNERS IF DETERMINED IN THIS SURVEY. (MAY SKETCH OR PASTE REPRODUCTION ON REVERSE SIDE.)

SEE C.O.S. No. \_\_\_\_\_



Surveyor's Seal

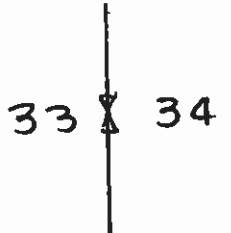
DIAGRAM OF CORNER:



I, DONALD M. SCHÄUBER certify that the information shown herein is true and correct.

Donald M. Schaubert  
Signature of Ground Party Chief

N. T6N R10W



I, William D. Bayer certify that I have carefully performed or reviewed the work done on the diagrammed corner as reported on this recordation form and approve the same.

William D. Bayer  
Signature of Surveyor

= Corner recorded on the sheet

33215  
Registration Number

Office of Clerk and Recorder, County of Deer Lodge

This "corner record" was filed for record on the 4th day of December, 1978, was noted on the cross-index plat and is assigned page No. 222, in book No. 1

Pauly Blume, Deputy  
County Official