

CERTIFIED CORNER RECORDATION

Corner Northeast of Section 1 T. 6 N R. 10 W P.M.M. Powell County

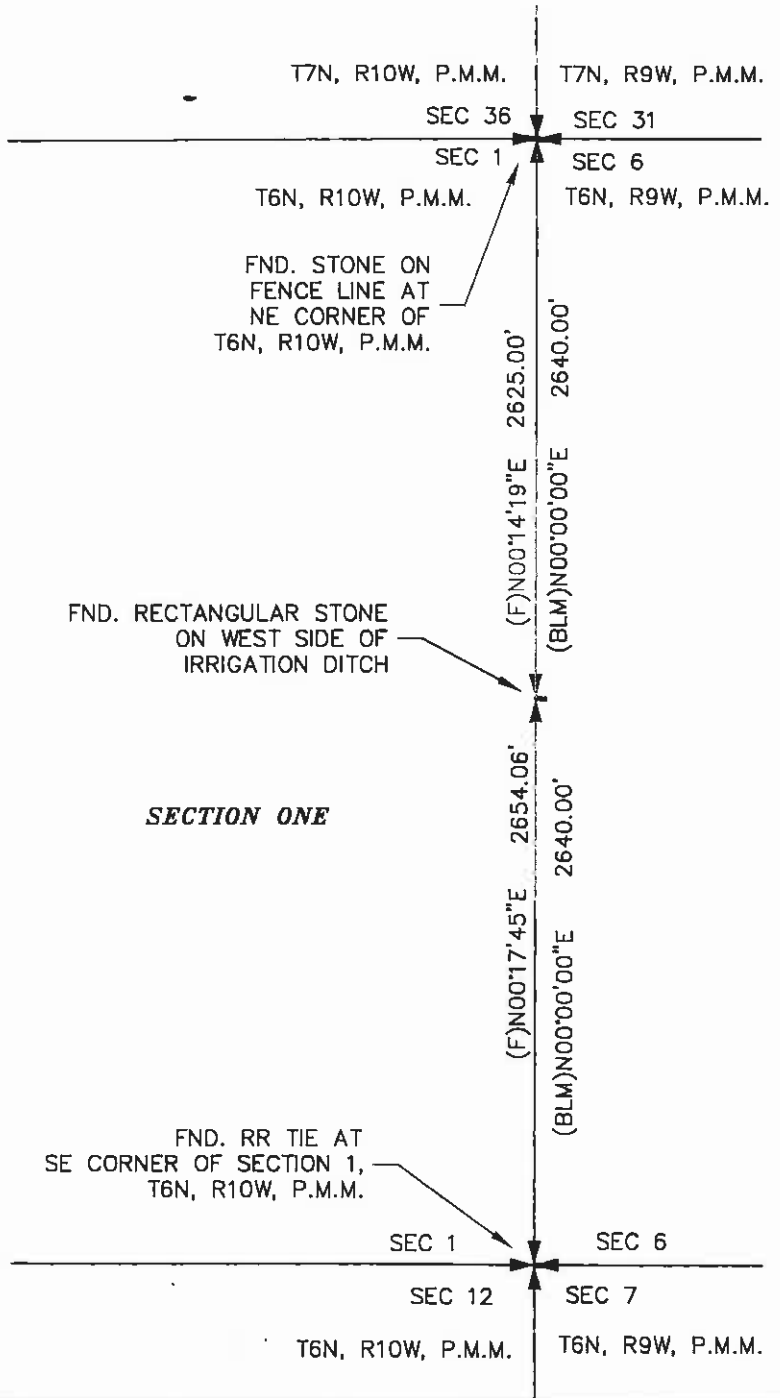
Scale: 1 inch = 900 feet

The basis of bearing we used to establish the found bearings shown on the east boundary of section 1 is the north line of T6N, R10W, P.M.M. Said bearing is S89°45'00"W.

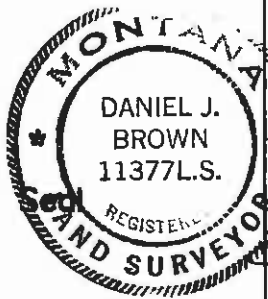


SURVEYOR NOTE:

The original survey of section 1, T6N, R10W, is dated April, 1868. This survey monumented Quarter Section and Section corners with charred posts and mounds of earth. Due to extensive irrigation and grazing we were unable to locate any of the original charred stakes for section 1. However we found a set stone at the Northeast corner of section 1 and a set stone at the east quarter corner of section 1. We accepted these stones as valid monuments because of testimony from adjacent landowners that they are survey monuments. We also accepted a railroad tie at the southeast corner of section 1 as a section corner. The distance between the railroad tie at the southeast corner of section 1 and the stone at the northeast corner of section 1 is 5279.05 feet which checks well with the BLM record distance of 5280.00 feet (80 chains).



STONE PROTRUDING OUT OF GROUND APPROXIMATELY 3 INCHES. SET UNDER EXISTING BARBED WIRE FENCE ON EAST SIDE OF EXISTING COUNTY ROAD.



CERTIFICATION

I, PAUL JESSOP
certify the information shown herein is true and correct.
Paul Jessop
Signature of Found Party Chief

I, DANIEL J. BROWN
certify that this Corner Record correctly represents work performed by me or under my direction in compliance with the "Corner Recordation Act", (70-22-101, et seq., M.C.A.)
Daniel J. Brown
Signature of Surveyor & Seal

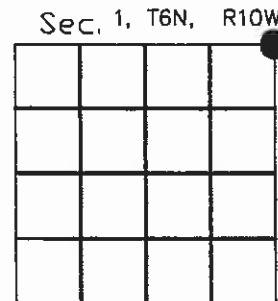
Date: 6/20/01 Reg. No. 11377LS
 Employer: BROWN AND ASSOCIATES, INC.

SKETCH OF CORNER 150629

Office of Clerk and Recorder, County of POWELL, This 'corner record' was filed for record on JUNE 22, 2001 @ 1:15 pm was noted on the cross-index plat and is assigned page No. _____, in book No. _____

Karla M. Ryden
 County Official

Cross Index No. A-25 T. 6N R. 10W P.M.M.



• corner this sheet