

CERTIFIED LAND CORNER RECORDATION

DESCRIPTION OF CORNER EVIDENCE FOUND, AND ORIGINAL RECORD (IF KNOWN)

1. E 1/16 on South line of Section 32 T6N, R13W
Record & Found: BLM brass caps (1967) BTs: S.56 3/4 E. 120 lks;
N.76 3/4 W. 82 lks.
2. WE 1/64 on South line of Section 32 T6N, R13W
Record: Copper coated steel stake w/bradd cap - set 1967, BTs N. 33 3/4 W.
36 lks; S. 51 1/2 W. 37 lks.
Found: Both BTs in good condition - No corner monument left.
3. W.C. to 1/4 Between Section 32 T6N and Section 5 T5N, R13W
Record - Copper post with brass cap in mound of stone (1967) BTs:
N.87 3/4 E. 44 lks.; S.56E. 50 lks.
Found: BTs and stone mound with hole in center.

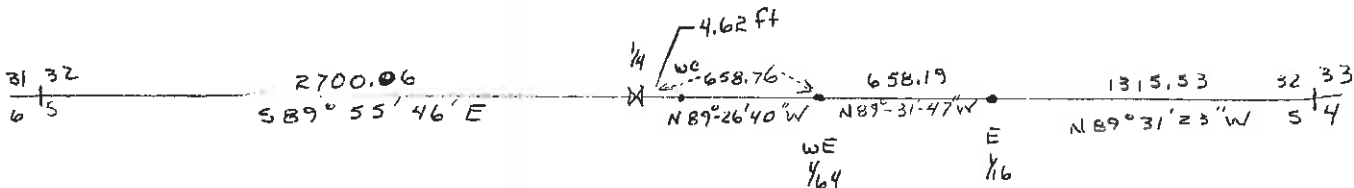
DESCRIPTION OF MONUMENT AND ACCESSORIES ESTABLISHED TO PERPETUATE THE ORIGINAL LOCATION OF THIS CORNER:

Date of work: Nov. 1979

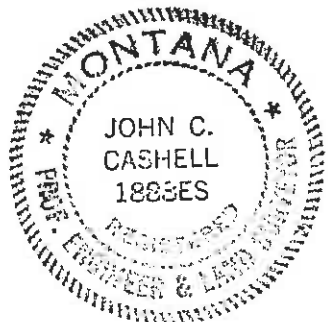
1. No further perpetuation needed
2. Set 30"x2" galvanized pipe with brass cap marked with corner information, 1888ES, and 1979 - New BT - 10" pine S.61E. 20.5 ft.
3. Set 30"x2" galvanized pipe with brass cap marked with corner information, 1888ES, and 1979 - New BT 6" pine S.80W. 3.4 ft.

SKETCH, WITH COURSE AND DISTANCE TO ADJACENT CORNERS IF DETERMINED IN THIS SURVEY. (MAY SKETCH OR PASTE REPRODUCTION ON REVERSE SIDE.)

See Certificate of Survey #112 and other recordations in Section 32 & 29



Surveyor's Seal



I, David M. Albert
certify that the information shown herein is true and correct.

David M. Albert

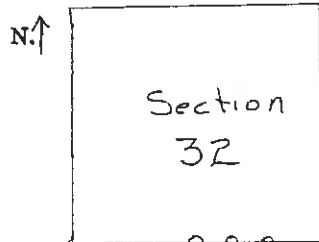
Signature of Ground Party Chief

I, John C. Cashell
certify that I have carefully performed or reviewed the work done on the diagrammed corner as reported on this recordation form and approve the same.

John C. Cashell

Signature of Surveyor

DIAGRAM OF CORNER:



T6N, R13W, PM
O = Corner recorded on the sheet

1888ES
Registration Number

Office of Clerk and Recorder, County of Granite

This "corner record" was filed for record on the 9th day of July, 1980, was noted on the cross-index plat and is

assigned page No., in book No.
County Official Tom J. Sauer, Deputy

Cross Index No. 2-7 T. 6 R. 13 Mer