

CERTIFIED LAND CORNER RECORDATION

DESCRIPTION OF CORNER EVIDENCE FOUND, AND ORIGINAL RECORD (IF KNOWN)

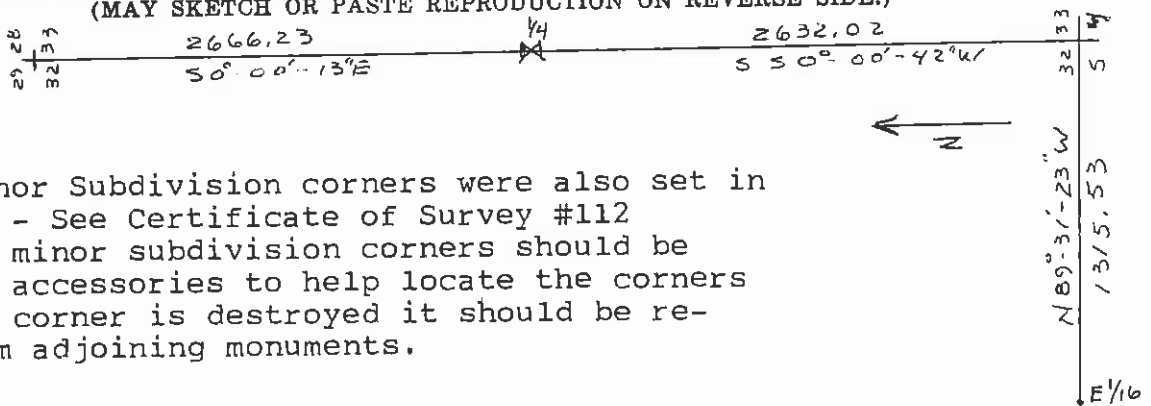
1. $\frac{1}{4}$ Corner between Sections 32 & 33, T6N, R13W
Record: A limestone 18x14x8 ins. in the ground BT: S.62E. 12 lks; N.67W. 6 lks.
Found: Stone 6"x3"x3" above ground, $\frac{1}{4}$ on W. face, Stump of SE BT, fallen NW BT
- ② Corner to Sections 32 & 33, T6N, & Sections 4 & 5 T5N, R13W
Record & Found: Brass capped monument set in 1967
 BTs: N.87 $\frac{3}{4}$ ° E. 22 lks; S.6 $\frac{3}{4}$ ° E. 45 lks; S.55 $\frac{3}{4}$ ° W. 8 lks; N.11 $\frac{3}{4}$ ° W. 61 lks.

DESCRIPTION OF MONUMENT AND ACCESSORIES ESTABLISHED TO PERPETUATE THE ORIGINAL LOCATION OF THIS CORNER:

Date of work: Nov. 1979

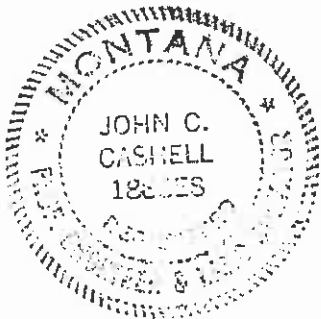
1. Set 30"x2" galvanized pipe with brass cap marked with corner information & 1888ES & 1979
 BTs: 9" fir S.64W. 6.3 ft; 7" pine N. 65E. 27.1 ft; 8" pine N.19W. 24.5'
2. No further perpetuation required.

SKETCH, WITH COURSE AND DISTANCE TO ADJACENT CORNERS IF DETERMINED IN THIS SURVEY. (MAY SKETCH OR PASTE REPRODUCTION ON REVERSE SIDE.)



Note: 9 Minor Subdivision corners were also set in Section 32 - See Certificate of Survey #112
 BTs on the minor subdivision corners should be treated as accessories to help locate the corners but if the corner is destroyed it should be replaced from adjoining monuments.

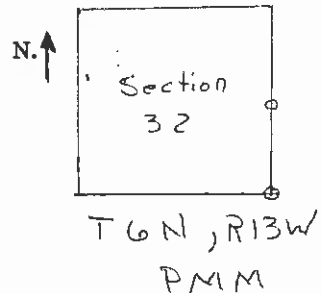
Surveyor's Seal



I, David M. Albert
 certify that the information shown herein is true and correct.
David M. Albert
 Signature of Ground Party Chief

I, John C. Cashell
 certify that I have carefully performed or reviewed the work done on the diagrammed corner as reported on this recordation form and approve the same.
John C. Cashell
 Signature of Surveyor

DIAGRAM OF CORNER:



1888ES
 Registration Number

Office of Clerk and Recorder, County of Granite
 This "corner record" was filed for record on the 9th day of July 1980, was noted on the cross-index plat and assigned page No., in book No.
M. J. James Dep.
 County Official

Cross Index No. 2-9 T. 6 R. 13 Me)