

### CERTIFIED LAND CORNER RECORDATION

#### DESCRIPTION OF CORNER EVIDENCE FOUND, AND ORIGINAL RECORD (IF KNOWN)

1.  $\frac{1}{4}$  Corner between Sections 20 & 29 T6N, R13W  
Record: Porphyry stone 18x14x5 ins., 12 ins. in the ground: BTs N24 $\frac{1}{2}$ <sup>o</sup>W 36 lks.; S20W 60 lks.  
Found: Stone in place with both BTs
2. Corner to Sections 20, 21, 28, 29 T6N R13W  
Record: Quartsite stone 18x10x6 ins. 12 ins. in the ground with 2 notches on South and 4 notches East  
BTs - N54<sup>o</sup>E 24 lks., S45<sup>o</sup>E 21 lks., N23<sup>o</sup>W 46 lks., S60<sup>o</sup>W 21 lks.  
Found: Stone firmly set and marked as shown on record, one good BT (S61<sup>o</sup>W 13.3'), one BT stump and one fallen BT
3.  $\frac{1}{4}$  Corner between Sections 29 & 28 T6N R13W

(over)

#### DESCRIPTION OF MONUMENT AND ACCESSORIES ESTABLISHED TO PERPETUATE THE ORIGINAL LOCATION OF THIS CORNER:

Date of work: Nov., 1979.

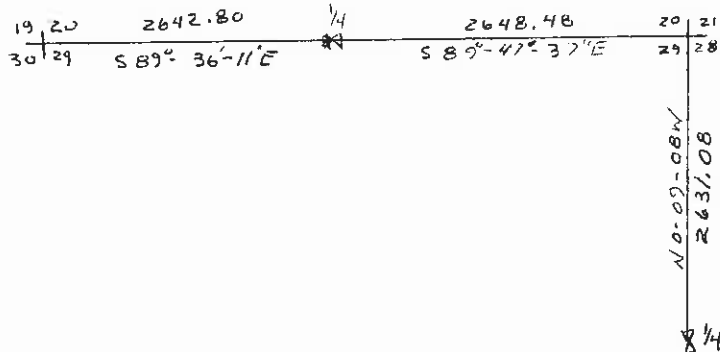
All corners monumented with 30"x2" galvanized pipes with brass caps stamped with corner information, date, and 1888ES. A red fiberglass post with attention sign is set alongside each monument.

1. BTs - 7" pine (original BT) N27W 23.6 ft.; 8" pine (original BT) S21<sup>o</sup>W 39.0 ft.; 8" pine N29<sup>o</sup>W 8.2 ft.
2. BTx - 13" pine (original BT) S61<sup>o</sup>W 13.3 ft.; 6" fir N19<sup>o</sup>E 3.8 ft.; 20" fir N39<sup>o</sup>E 25.7 ft.
3. BTs - 18" fir N86<sup>o</sup>W 13.0 ft.; 12" pine N45<sup>o</sup>E 11.0 ft.; 8" pine S65<sup>o</sup>30'E 13.2'

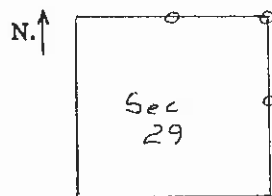
All BTs blazed and scribed with corner information and signed with location tags.

#### SKETCH, WITH COURSE AND DISTANCE TO ADJACENT CORNERS IF DETERMINED IN THIS SURVEY. (MAY SKETCH OR PASTE REPRODUCTION ON REVERSE SIDE.)

See Certificate of Survey #112



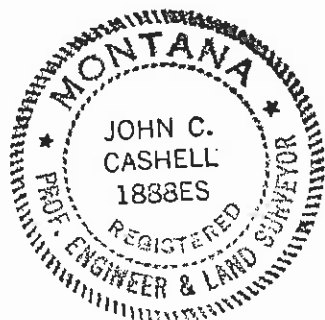
#### DIAGRAM OF CORNER:



T6N, R13W  
PMM

o = Corner recorded on the sheet

Surveyor's Seal



I, David M. Albert  
certify that the information shown herein is true and correct.

David M. Albert

Signature of Ground Party Chief

I, John C. Cashell  
certify that I have carefully performed or reviewed the work done on the diagrammed corner as reported on this recordation form and approve the same.

John C. Cashell

Signature of Surveyor

1888ES  
Registration Number

Office of Clerk and Recorder, County of Granite

This "corner record" was filed for record on the 9th day of July, 1980, was noted on the cross-index plat and is assigned page No. ...., in book No. ....

W. J. Sanner, Jr.  
County Official

Cross Index No. T-9 T. 6 R. 13 Mer.