

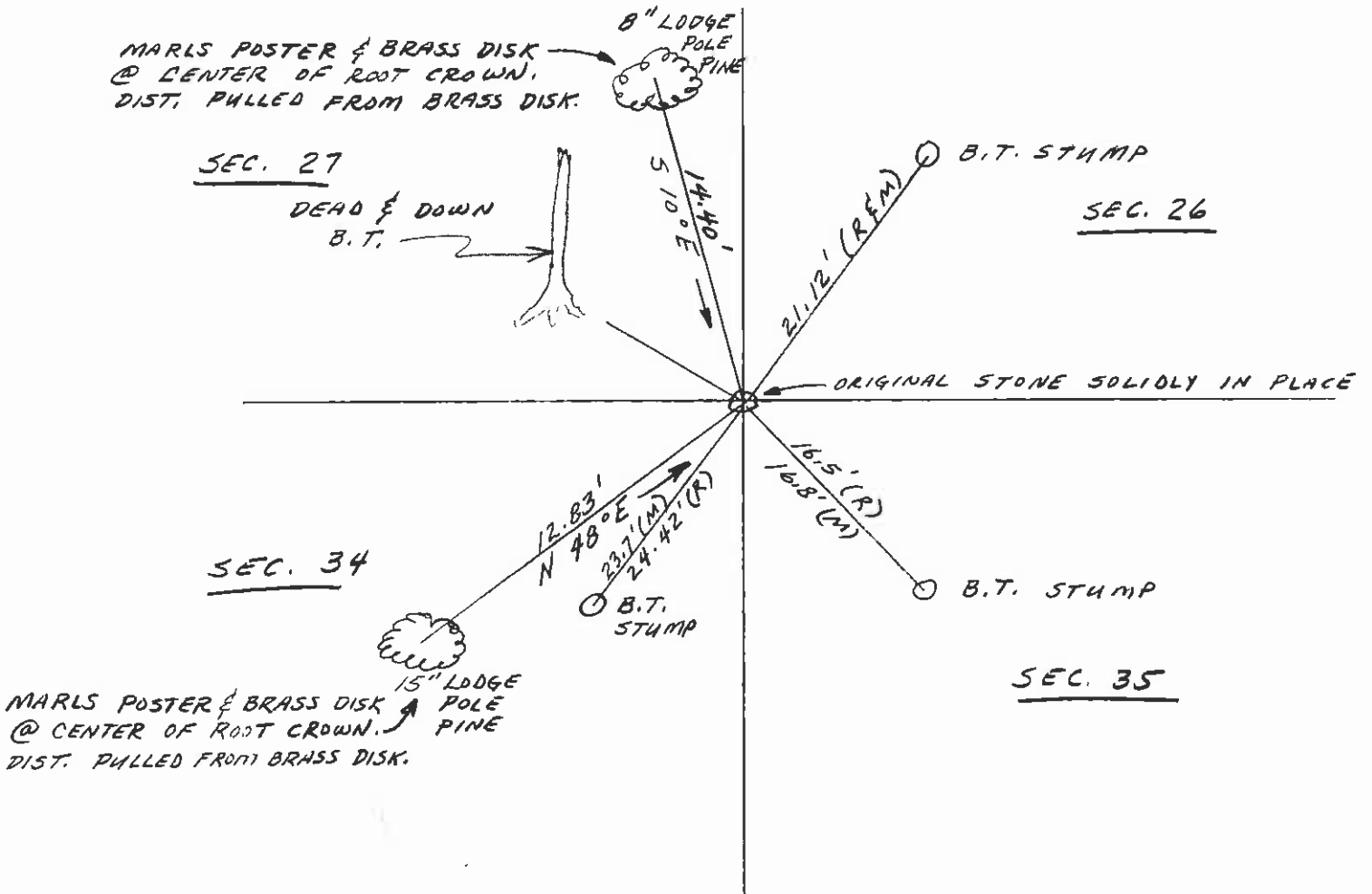
INSTRUCTIONS

1. Original and subsequent record used to evaluate the corner position.
2. Description of evidence found, note discrepancies in the record, state method of establishing lost or obliterated corners.
3. Description of monument and accessories set to perpetuate the corner position.
4. Sketch of corner, show all pertinent data which can best be shown in a sketch example, corner marking, topography ties, position of accessories, etc.
5. Certification must be signed and sealed by Land Surveyor registered in the State of Montana.
6. Fill in Cross Index & Section Diagram at bottom of sheet.

CERTIFIED CORNER RECORDATION

Corner N. W. COR. SEC. 35 T. 6N R. 13W P.M.M. GRANITE County

1. ORIGINAL GLO NOTES AND PLAT, U.S.G.S. (SILVER LAKE, MT.) QUAD (7 1/2') MAP.
2. FOUND ORIGINAL STONE SOLIDLY IN PLACE, A DOWN & DEAD B.T IN SEC. 27, AND A B.T, STUMP IN SECTIONS 26, 34 & 35.
3. SET MARLS POSTERS ON TREES IN SECTION 27 & 34 AS SHOWN IN SKETCH BELOW.



CERTIFICATION

I, _____
certify the information shown herein is true and correct

Signature Ground Party Chief

I, DENNIS E. LAY
certify that this Corner Record correctly represents work performed by me or under my direction in compliance with the "Corner Recordation Act" (70-22-101, et seq., M.C.A.)

Signature of Surveyor & Seal

Date: 8-4 Reg. No. 9962 LS

Employer: PEGASUS GOLD CORP.

SKETCH OF CORNER

Office of Clerk and Recorder, County of Granite. This "corner record" was filed for record on Aug 5, 1992 11:05 AM was noted on the cross-index plat and is assigned page No. _____, in book No. 24007

Blanche Pederson
County Official

Cross Index No. V17 T. 6 R. 13 P.M.M.

Sec. 35

•			

• - corner this sheet