

CERTIFIED LAND CORNER RECORDATION

DESCRIPTION OF CORNER EVIDENCE FOUND, AND ORIGINAL RECORD (IF KNOWN)

Original Record: Set a Granite Stone 16x6x6 in. 10 in in the ground for cor to sec. 15,16,21,22. mkd. with 3 notches on the E. and 3 on the S. edge.

No original evidence of corner found. Fence corner is in approximate location.

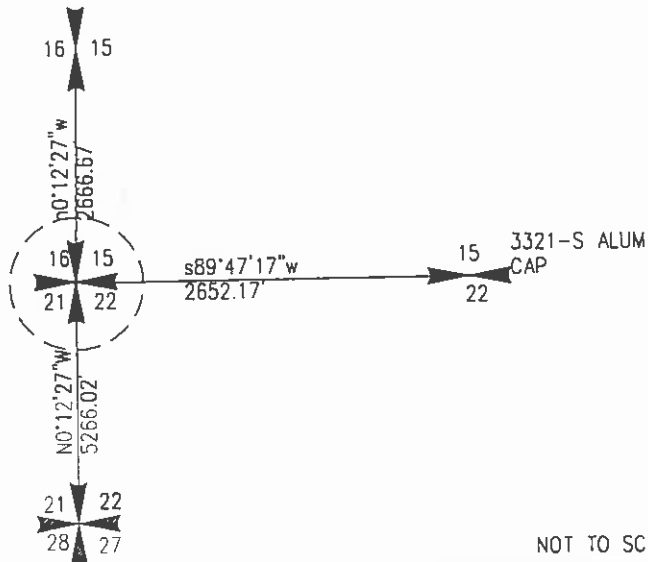
DESCRIPTION OF MONUMENT AND ACCESSORIES ESTABLISHED TO PERPETUATE THE ORIGINAL LOCATION OF THIS CORNER:

DATE OF WORK 10/97

Set 5/8 rebar with Aluminum cap as shown below. Put MARLS sign on corner fencepost nearby. Corner location was reestablished using Section corners to the North and South. and C.O.S. 351.

SKETCH, WITH COURSE AND DISTANCE TO ADJACENT CORNERS IF DETERMINED IN THIS SURVEY, (MAY SKETCH OR PASTE REPRODUCTION ON REVERSE SIDE).

See COS 42-M for further details and section breakdown.



NOT TO SCALE

SURVEYOR'S SEAL

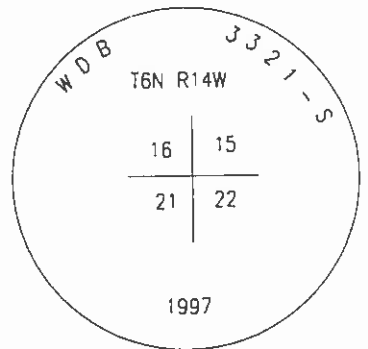
DIAGRAM OF CORNER:

I, HANS BOHRNSEN, Certify that the information shown herein is true and correct.

Hans Bohrsen
Signature of ground party chief

I, William D. Boyer, certify that I have carefully performed or reviewed the work done on the diagrammed corner as reported on this recordation form and approve the same.

William D. Boyer
Signature of Surveyor
33215
Registration Number



SET REBAR WITH ALUMINUM CAP AS SHOWN ABOVE



Office of Clerk and Recorder, County of Granite
This "corner record" was filed for record on the 2nd day of Feb 19 98, was noted on the cross index plat and is assigned page No. _____, in book No. _____

36656

Blanche Pederson
Signature of County Official

Cross Index No. 13-N sec. 15,16,21 T. 6N R. 14W