

CERTIFIED LAND CORNER RECORDATION

DESCRIPTION OF CORNER EVIDENCE FOUND, AND ORIGINAL RECORD (IF KNOWN)

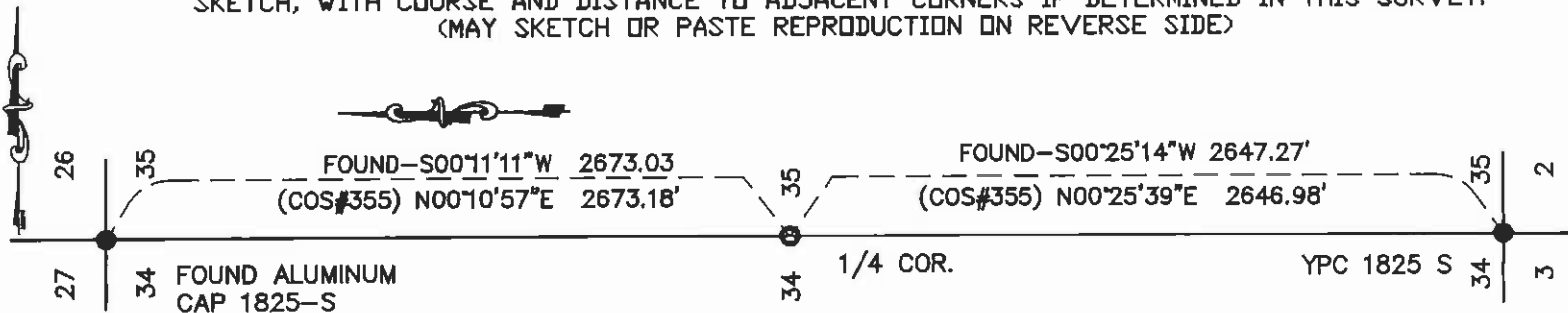
RECORD: GLO - GRANITE STONE, 14"x12"x6" IN. IN THE GROUND MARKED 1/4 ON WEST SIDE
 NO EVIDENCE OF ORIGINAL CORNER

DESCRIPTION OF MONUMENT AND ACCESSORIES ESTABLISHED
 TO PERPETUATE THE ORIGINAL LOCATION OF THIS CORNER:

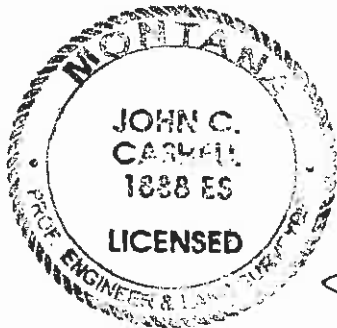
Date of work, ARRIL 2001

THIS CORNER WAS RE-ESTABLISHED USING FOUND NAIL AT POSITION OF 1/4 CORNER
 SET 2-1/2" ALUMINUM CAP MARKED CASHELL ENGRS. 1888ES FOR 1/4 COR. FOR SECTIONS 34 AND 35

SKETCH, WITH COURSE AND DISTANCE TO ADJACENT CORNERS IF DETERMINED IN THIS SURVEY.
 (MAY SKETCH OR PASTE REPRODUCTION ON REVERSE SIDE)



Surveyor's Seal



WILL DANFORTH

I, William Danforth
 certify that the information shown herein is true and correct.

William Danforth

Signature of Ground Party Chief

JOHN C. CASHELL

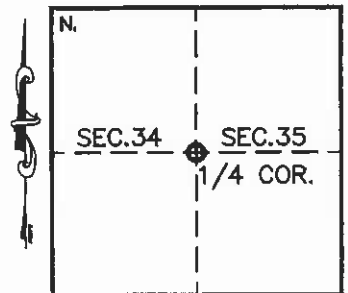
I, John C. Cashell
 certify that I have carefully performed or reviewed the work done on the diagrammed corner as reported on this recordation form and approve the same.

John C. Cashell

Signature of Surveyor

1888ES
 Registration Number

DIAGRAM OF CORNER:



○ = Corner recorded on the sheet

Office of Clerk and Recorder, County of Granite

This 'corner record' was filed for record on the 7th day of Jan, 2002, at 8:45 am, was noted on the cross-index plat and assigned page No. 43770, in book No. 117

County Official Blanche Pederson R. 14