

CERTIFIED LAND CORNER RECORDATION

DESCRIPTION OF CORNER EVIDENCE FOUND, AND ORIGINAL RECORD (IF KNOWN)

Original Record: Set a Post, 4 feet long, 4" in diameter with marked stone 3x3x2 1/2 in. in ground mkd 1/4 on west side.
 Raised a mound of earth 2 ft. high 4.5 foot base and dug pits 18 in sq. 12 in. deep. n.s.e.w.
 No original evidence of corner found. Corner is in right of way of state highway 1.

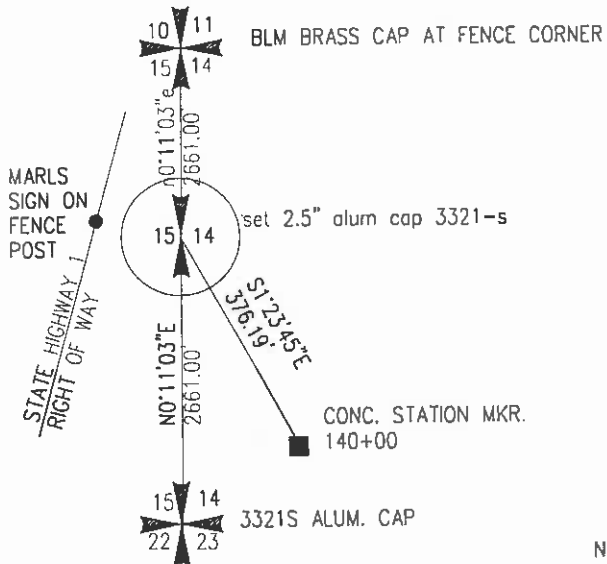
DESCRIPTION OF MONUMENT AND ACCESSORIES ESTABLISHED TO PERPETUATE THE ORIGINAL LOCATION OF THIS CORNER:

DATE OF WORK 10/97

Set 5/8 rebar with Aluminum cap as shown below. Put MARLS sign on corner fencepost nearby. Corner location was reestablished by single proportion. Station marker 140+00 bears s1'23'45"e, 376.19'.

SKETCH, WITH COURSE AND DISTANCE TO ADJACENT CORNERS IF DETERMINED IN THIS SURVEY, (MAY SKETCH OR PASTE REPRODUCTION ON REVERSE SIDE).

See COS 42-M for further details and section breakdown.



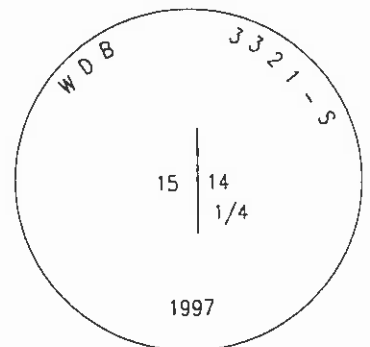
NOT TO SCALE

SURVEYOR'S SEAL

I, HANS BOHRNSEN, Certify that the information shown herein is true and correct.

Hans Bohrsen
 Signature of ground party chief

DIAGRAM OF CORNER:



SET REBAR WITH ALUMINUM CAP AS SHOWN ABOVE



I, William D. Boyer, certify that I have carefully performed or reviewed the work done on the diagrammed corner as reported on this recordation form and approve the same.

William D. Boyer
 Signature of Surveyor
3321 S
 Registration Number

Office of Clerk and Recorder, County of Granite

This "corner record" was filed for record on the 2nd day of Feb, 19 98, was noted on the cross index plat and is assigned page No. _____, in book No. _____ 3:03pm

Blanche Pederson
 Signature of County Official

36658

Cross Index No. 17L sec. 14, 15 T. 6N R. 14W