

76614

Book 3 4-2005

CERTIFIED CORNER RECORDATION

Corner SW SECTION 8 T. 6N R. 19E P.M.M. GOLDEN VALLEY County

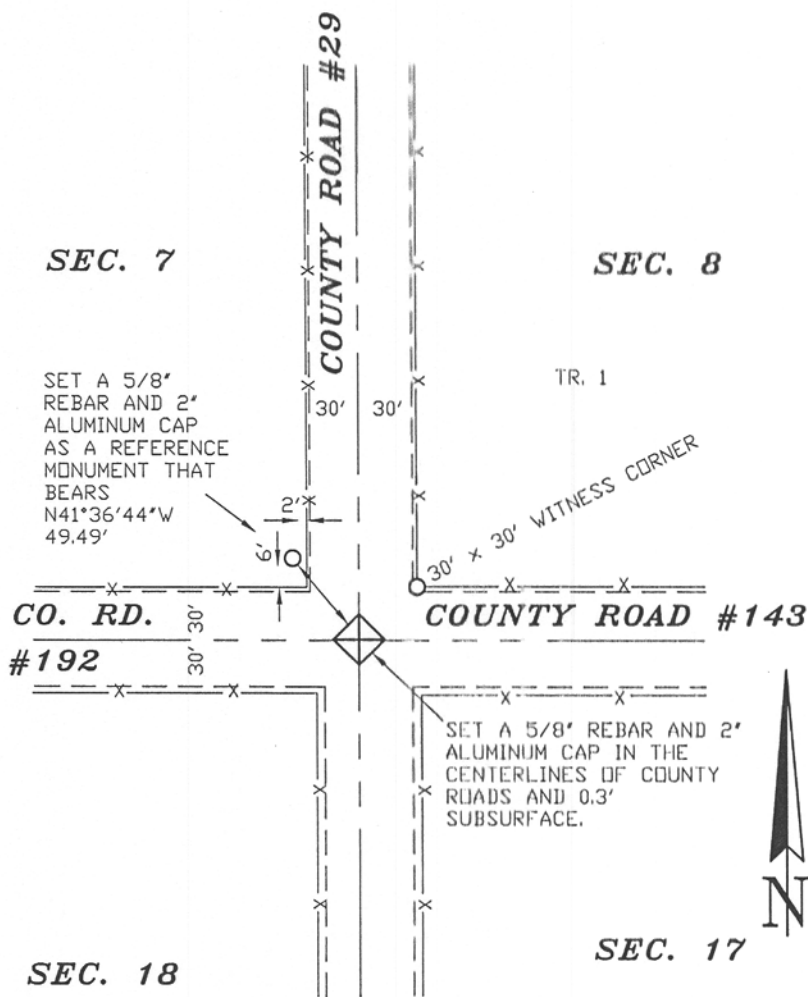
ORIGINAL RECORD: Unknown

SUBSEQUENT RECORD: Burlington Northern deed D-296 shows a tie to the Section Corner.

EVIDENCE FOUND: No original evidence found. Corner falls in the centerlines of county roads N-S x E-W. The tie from found monuments, per D-296, falls in intersection of County Roads as shown below.

PERPETUATION: (May, 2004) Set a 5/8" rebar and 2" aluminum cap, marked as shown, in the centerlines of county roads, N-S x E-W, 0.3' subsurface per record distance as stated in Deed D-296 to Burlington Northern Inc. property to the North. Set references as shown below.

SEE ASSOCIATED CERTIFICATE OF SURVEY



04-580

CERTIFICATION

I, _____, certify the information shown herein is true and correct.

Signature Ground Party Chief

I, Scott C. Koterba, certify that this Corner Record correctly represents work performed by me or under my direction in compliance with the "Corner" Recordation Act (70-22-101, et seq., M.C.A.)

Scott C. Koterba
Signature of Surveyor & Seal

Date: 5/9/05 Reg. No. 10801 LS

Employer: Milestone Surveying

SKETCH OF CORNER

Office of Clerk and Recorder, County of Golden Valley. This "corner record" was filed for record on May 12, 2005 was noted on the cross-index plat and is assigned page No. 4-2005, in book No. 3 Arthur Ott County Official

Spec: Grates

Cross Index No. J-5 T. 6N R. 19E P.M.M.

Sec. 8

• corner this sheet