

72473

INSTRUCTIONS

1. Original and/or subsequent record used to evaluate the corner position.
2. Description of evidence found, note discrepancies in the record, state method of establishing lost or obliterated corners.
3. Description of monument and accessories set to perpetuate the corner position.
4. Sketch of corner, show all pertinent data which can best be shown in a sketch example, corner marking, topography (top, position of accessories, etc.
5. Certification must be signed and sealed by Land Surveyor registered in the State of Montana.
6. Fill in Cross Index & Section Diagram at bottom of sheet.

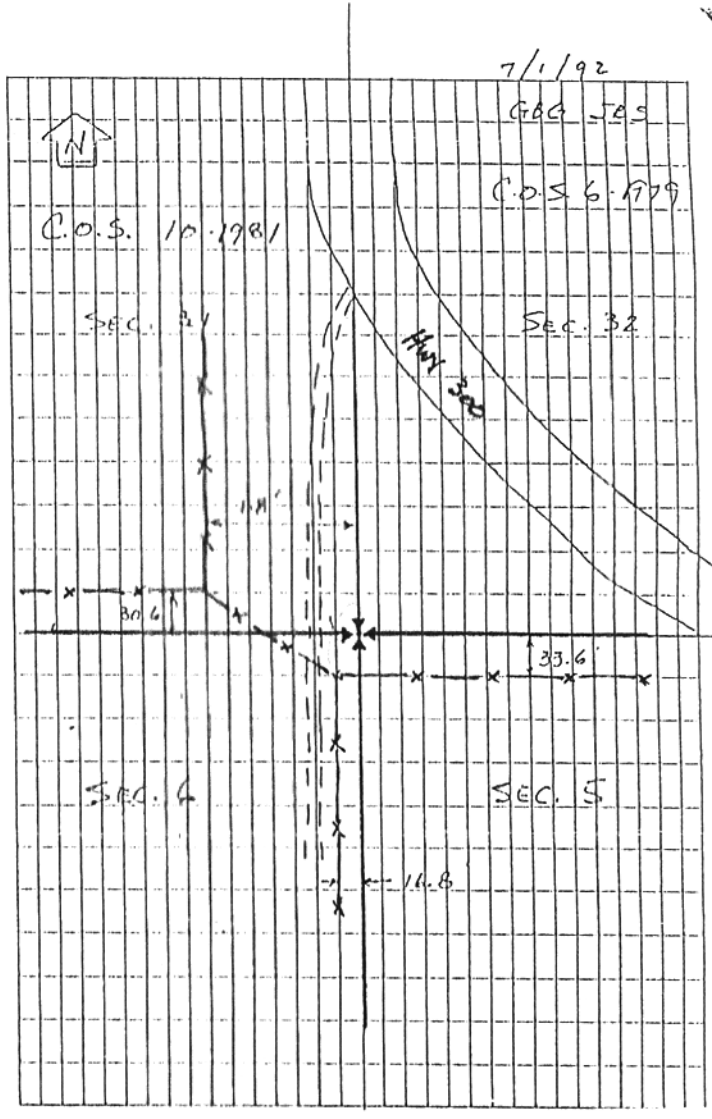
151-1992

CERTIFIED CORNER RECORDATION

Corner NW COR SEC. 5 T. 5 N R. 20 E P.M.M. GOLDEN VALLEY County

151-1992

| | |
|--------------------------------|---|
| NW COR. SEC. 5 T. 5 N R. 20 E. | |
| RECORD: 1878 | W. DELACY SET SANDSTONE |
| 23 X 14 X 2 MKD | 1 NOTCH ON W., 5 ON E., |
| DUG PITS. | |
| Hwy 300, | M.D.O.H. 5-71 (2) PLANS |
| SHOW CORNER | AS PI OF PROPOSED NEW E., |
| AT INTERSECT | OF OLD COUNTY ROADS |
| N-S AND E-W. | |
| FOUND: | 3/4" X 18" IRON ROD SET NEXT TO 1988 |
| | MDOH PI MON., WHICH IS A 3/8" REBAR WITH |
| | 2" ALUM CAP MKD "PI 4/8 X 58.62 1988" |
| PERPETUATION: | PI MON. FITS TIED TO PROP. COR'S |
| | OF C.O.S. 6-1979 AND 10-1981, THEREFORE I |
| | ACCEPT AS CORNER POINT AND IN ITS PLACE SET |
| | A M.D.O.H. 2 1/2" X 30" ALUM POST, 24" IN THE |
| | GROUND, WITH A 3/4" ALUM. CAP MKD: |
| | T 6 N R 20 E |
| | S 31 S 32 |
| | S 6 S 5 |
| | T 5 N R 20 E |
| | 9758LS 1992 |
| | BURY REBAR & IRON ROD ALONGSIDE |



CERTIFICATION

I, Gunnar B. Getchell, certify the information shown herein is true and correct.

Gunnar B. Getchell
Signature Ground Party Chief

GUNNAR B. GETCHELL
I certify that this Corner Record correctly represents work performed by me or under my direction in compliance with the "Corner Recordation Act" (70-22-101, et seq., M.C.A.)

Gunnar B. Getchell
Signature of Surveyor & Seal

Date: 7/16/92 Reg. No. 9758LS

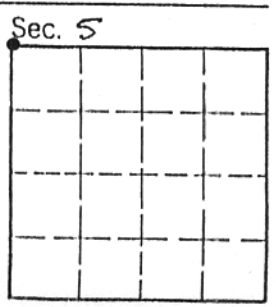
Employer: MORRISON MAIERLE/CSSA



SKETCH OF CORNER

Office of Clerk and Recorder, County of Golden Valley. This "corner record" was filed for record on July 17, 1992 was noted on the cross-index plat and is assigned page No. 151-1992, in book No. 2

Queen Mattheis
County Official



Cross Index No. A-5 T. 5 N R. 20 E P.M.M.
2-5 6 20

• - corner this sheet