

18718

CERTIFIED CORNER RECORDATION

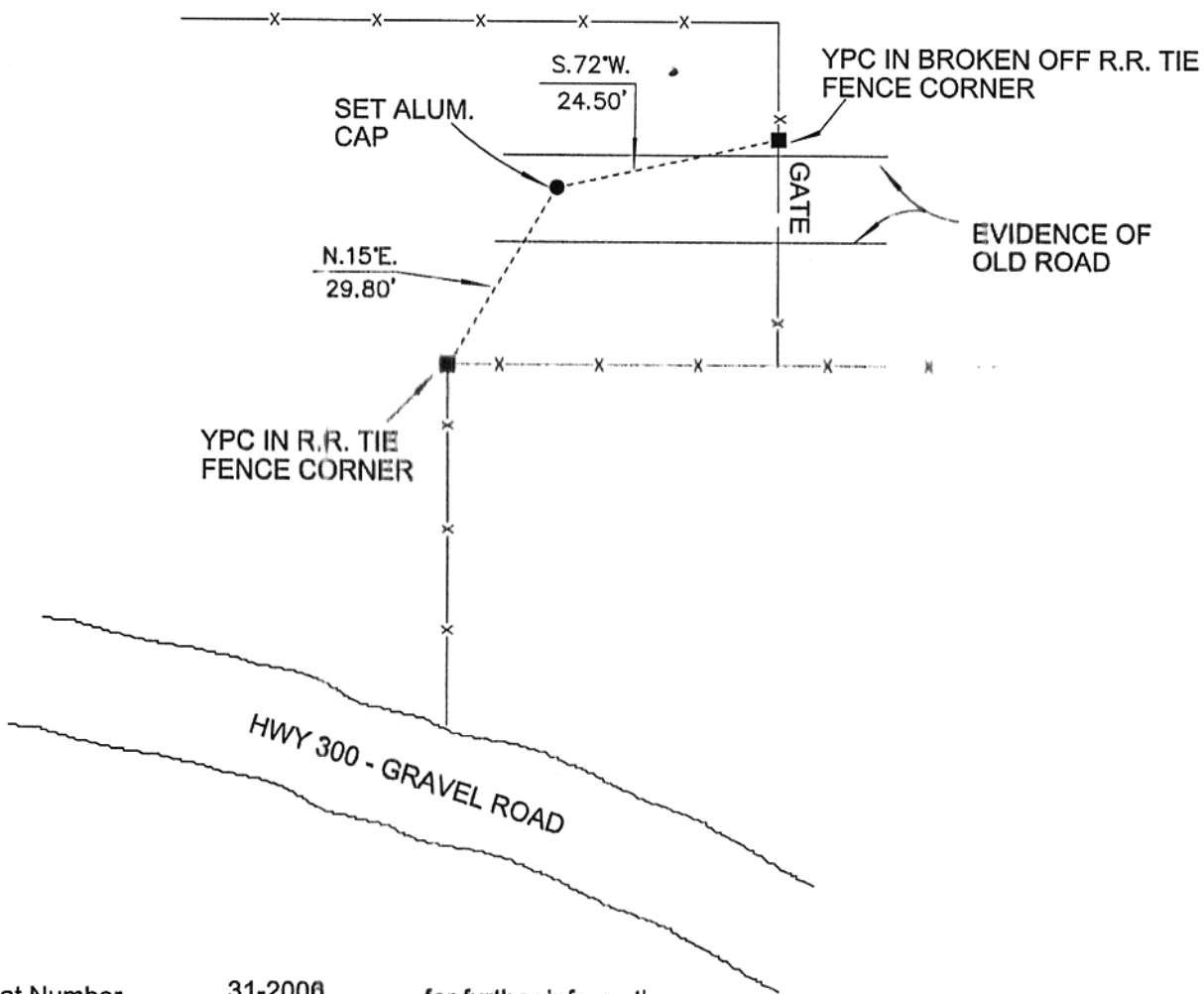
6-2006

Corner S1/4 COR. SEC 32 T. 6N. R. 20E. P.M.M. GOLDEN VALLEY County

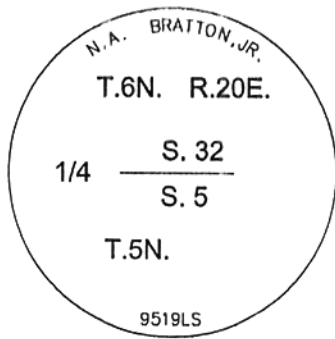
Original: Record per. 1878 GLO survey by Walter W. de Lacy & Germaine A. Kellogg; Deposited a sandstone 3x3x2 18 ins. marked with a "X", 12 in. in the ground for 1/4 Sec. Cor.; dig pits 18 in. Sq. 12 ins. deep N, S, E & W of corner, and raised a mound of earth 2 ft. high, 4 1/2 ft. base.

Evidence: No trace of original stone found. Corner position was in centerline of County Road per March 28, 1911 Survey by County Surveyor E.J. Parkenson

Perpetuation: Set 2" aluminum cap at proportioned position, and falls in centerline of old grown over County road as shown below.



See Plat Number 31-2006 for further information



SKETCH OF CORNER



CERTIFICATION

I, Brent Nearpass
certify the information shown herein is true and correct.
[Signature]
Signature Ground Party Chief

I, Neil A. Bratton, Jr.
certify that this Corner Record correctly represents work performed by me or under my direction in compliance with the "Corner Recordation Act" (78-22-101, et seq., M.C.A.)
[Signature]
Signature of Surveyor & Seal

Date: 11-16-2005 Reg. No. 9519 LS
Employer: Red Lodge Surveying, Inc.

Office of Clerk and Recorder, County of Golden Valley

This "corner record" was filed for record on May 22, 2006

was noted on the cross-index plat and is assigned page No. 284-2006

In book No. 3

Bebecca Korell deputy
County Official

Cross Index No. Z-7 T. 6N. R. 20E. P.M.M.

Section 32
