

INSTRUCTIONS

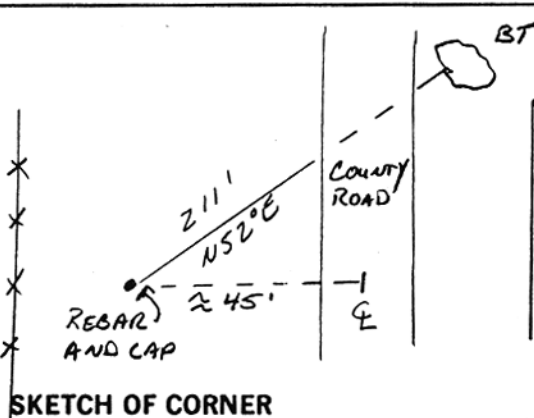
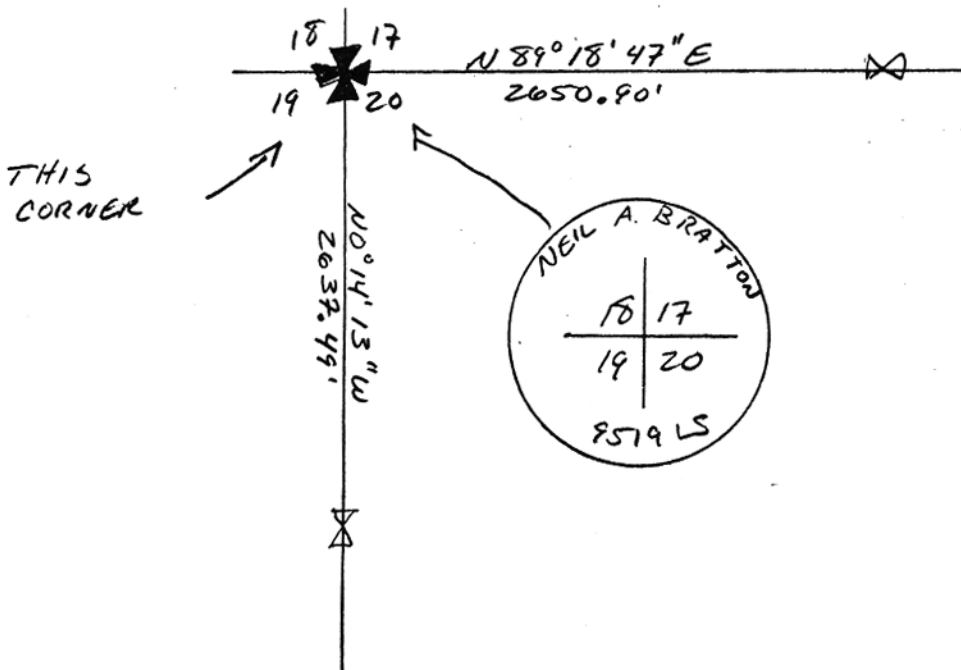
1. Original and/or subsequent record used to evaluate the corner position.
2. Description of evidence found, note discrepancies in the record, state method of establishing lost or obliterated corners.
3. Description of monument and accessories set to perpetuate the corner position.
4. Sketch of corner, show all pertinent data which can best be shown in a sketch example, corner marking, topography ties, position of accessories, etc.
5. Certification must be signed and sealed by Land Surveyor registered in the State of Montana.
6. Fill in Cross Index & Section Diagram at bottom of sheet.

239088

CERTIFIED CORNER RECORDATION

Corner SECS. 17, 18, 19 & 20 T. 6N R. 25E P.M.M. MUSSELSHELL County

- 1) ORIGINAL RECORD PER 1904 G.L.O. SURVEY: SET A SANDSTONE 24" X 15" X 4", 18" IN THE GROUND, FOR COR. OF SECS 17, 18, 19 & 20 MARKED WITH 3 NOTCHES ON S AND 5 NOTCHES ON E EDGES FROM WHICH A PINE 24" BEARS N 52° E, 211.2' DIST. MARKG. T 6N R 25E S 17 BT. RAISED A MOUND OF STONE W OF COR.
- 2) FOUND AND ACCEPTED OLD IRON PIPE. FOUND BEARING TREE N E OF CORNER. NO STONE FOUND.
- 3) REPLACED IRON PIPE WITH 5/8" REBAR AND STAMPED ALUM CAP. SET STEEL FENCE POST ALONGSIDE.



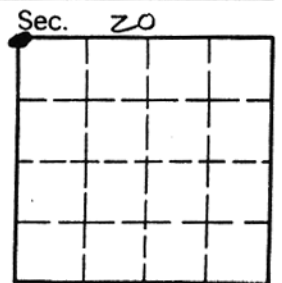
CERTIFICATION

I, WILLIAM H. KARAS
 certify the information shown herein is true and correct.
William H. Karas
 Signature Ground Party Chief

I, NEIL A. BRATTON JR
 certify that this Certified Record correctly represents work performed by me under my direction in compliance with the "Corner Recordation Act", 70-20-101, et seq., M.C.A.
Neil A. Bratton, Jr.
 Signature of Surveyor & Seal
 Date: 9/29/94 Reg. 9519LS

NEIL A. BRATTON, JR.
 REGISTERED LAND SURVEYOR

Office of Clerk and Recorder, County of Musselshell. This "corner record" was filed for record on June 29, 1994 11:40 AM was noted on the cross-index plat and is assigned page No. _____, in book No. _____ by JANE E. MANG County Official



Cross Index No. N-5 T. 6N R. 25E P.M.M.

• corner this sheet