

**INSTRUCTIONS**

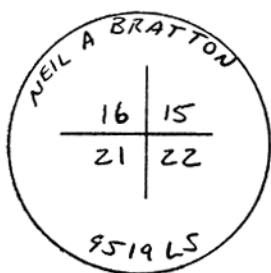
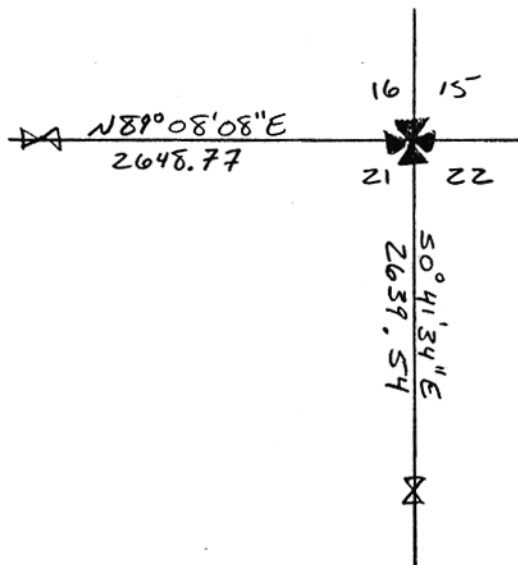
1. Original and/or subsequent record used to evaluate the corner position.
2. Description of evidence found, note discrepancies in the record, state method of establishing lost or obliterated corners.
3. Description of monument and accessories set to perpetuate the corner position.
4. Sketch of corner, show all pertinent data which can best be shown in a sketch example, corner marking, topography ties, position of accessories, etc.
5. Certification must be signed and sealed by Land Surveyor registered in the State of Montana.
6. Fill in Cross Index & Section Diagram at bottom of sheet.

239096

**CERTIFIED CORNER RECORDATION**

Corner NE SEC 21 T. 6N R. 25E P.M.M. MUSSELSHELL County

- 1) ORIGINAL RECORD PER G.L.O. SURVEY 1904: SET A SANDSTONE 18x14x3 INS 12 INS IN THE GROUND FOR COR OF SECS 15, 16, 21 AND 22, MARKED WITH 3 NOTCHES ON S AND E EDGES AND RAISED A MOUND OF STONE 2 FT BASE 1 1/2 FT HIGH W OF COR. A PINE 26 INS. DIAM BEARS S 43° E 209.9' DIST. MARKED T 6 N, R 25 E, S 22 BT. A PINE 18 INS DIAM. BEARS N 26° W, 118.8' DIST. MARKED T 6 N, R 25 E, S 16 B.T.
- 2) FOUND SET MARKED STONE WITH 5/8" REBAR SET ALONG WEST SIDE. BOTH BEARING TREES DOWN.
- 3) SET 1 1/2" STAMPED ALUM CAP ON FOUND REBAR. DROVE STEEL FENCE POST ON N SIDE OF STONE. NO OTHER ACCESSORIES WERE SET. CORNER FALLS ON SOUTH-EASTERLY OPEN SLOPE.



SKETCH OF CORNER

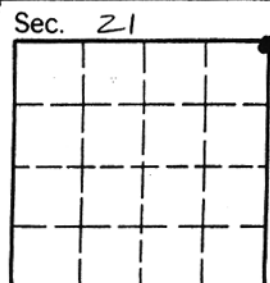
**CERTIFICATION**

I, William H. Karas  
certify the information shown herein is true and correct.  
William H. Karas  
Signature Ground Party Chief

I, Neil A. Bratton Jr  
certify that this Corner Record correctly represents work performed by me or under my direction in compliance with the "Corner Record Act" (MCA 2-10) et seq., M.C.A.  
Neil A. Bratton Jr  
Signature of Surveyor & Seal

Date: June 29, 1994 Reel No. 9519 LS  
BRATTON, JR.  
Employer 9519 LS

Office of Clerk and Recorder, County of Musselshell  
record" was filed for record on June 29, 1994 11:55 AM  
was noted on the cross-index plat and is assigned page No. \_\_\_\_\_, in  
book No. \_\_\_\_\_  
JANE E. MANG  
by Norma M. Weigmann  
County Official



Cross Index No. N 13 T. 6N R. 25E P.M.M.

• - corner this sheet