

CERTIFIED LAND CORNER RECORDATION

DESCRIPTION OF CORNER EVIDENCE FOUND, AND ORIGINAL RECORD (IF KNOWN)

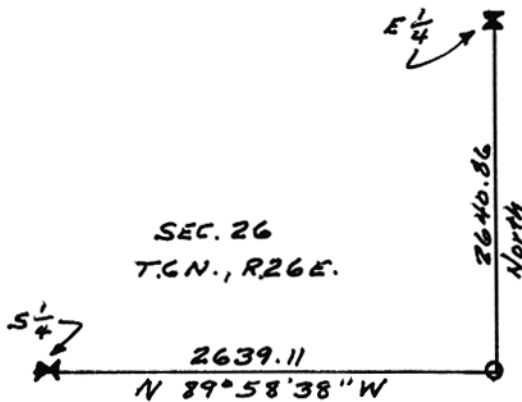
South East corner Section 26, T.6N., R. 26E., P.M.M. Found "3/4" I.D. pipe in place. No evidence of original stone found, however pipe conforms to original U.S. Government survey notes as to distances to bearing tree references found. Found a bearing tree South 40° East a distance of 47 links marked T.6N., R.26E., S.36 B.T. Found a bearing tree South 72° West a distance of 28 links marked T.6N., R.26E., S.35 B.T. (This tree is now a 3' stump with bearing marks still visible)

DESCRIPTION OF MONUMENT AND ACCESSORIES ESTABLISHED TO PERPETUATE THE ORIGINAL LOCATION OF THIS CORNER:

Date of work:.....

Set 60 d nail in power pole bearing North Westerly a distance of 95.25 feet. Set concrete nail in blacktop of existing roadway bearing North a distance of 166.0 feet. (See sketch on opposite page.)

SKETCH, WITH COURSE AND DISTANCE TO ADJACENT CORNERS IF DETERMINED IN THIS SURVEY. (MAY SKETCH OR PASTE REPRODUCTION ON REVERSE SIDE.)



STATE OF MONTANA, } ss.  
MUSSELSHELL COUNTY. }  
FILED THIS 13 DAY OF  
Nov A. D. 1923  
AT 2:29 O'CLOCK P. M.  
Claude F. Fletcher  
6/00 COUNTY RECORDER  
DEPUTY

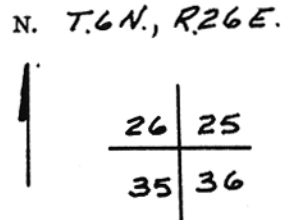
Surveyor's Seal



I, Lester L. Muhlbeier  
certify that the information shown herein is true and correct.  
*Lester L. Muhlbeier*  
Signature of Ground Party Chief

I, Harlan M. Lund  
certify that I have carefully performed or reviewed the work done on the diagrammed corner as reported on this recordation form and approve the same.  
*Harlan M. Lund*  
Signature of Surveyor

DIAGRAM OF CORNER:



= Corner recorded on the sheet

1827-S  
Registration Number

Office of Clerk and Recorder, County of.....

This "corner record" was filed for record on the ..... day of ..... 19....., was noted on the cross-index plat and is assigned page No....., in book No.....

County Official

Cross Index No. V-21 T. 6N R. 26E Mer.

