

INSTRUCTIONS

1. Original and/or subsequent record used to evaluate the corner position.
2. Description of evidence found, note discrepancies in the record, state method of establishing lost or obliterated corners.
3. Description of monument and accessories set to perpetuate the corner position.
4. Sketch of corner, show all pertinent data which can best be shown in a sketch example, corner marking, topography ties, position of accessories, etc.
5. Certification must be signed and sealed by Land Surveyor registered in the State of Montana.
6. Fill in Cross Index & Section Diagram at bottom of sheet.

CERTIFIED CORNER RECORDATION

Corner S14/S13 / S23/S24 T. 6N R. 26E P.M.M. MUSSELSHELL County

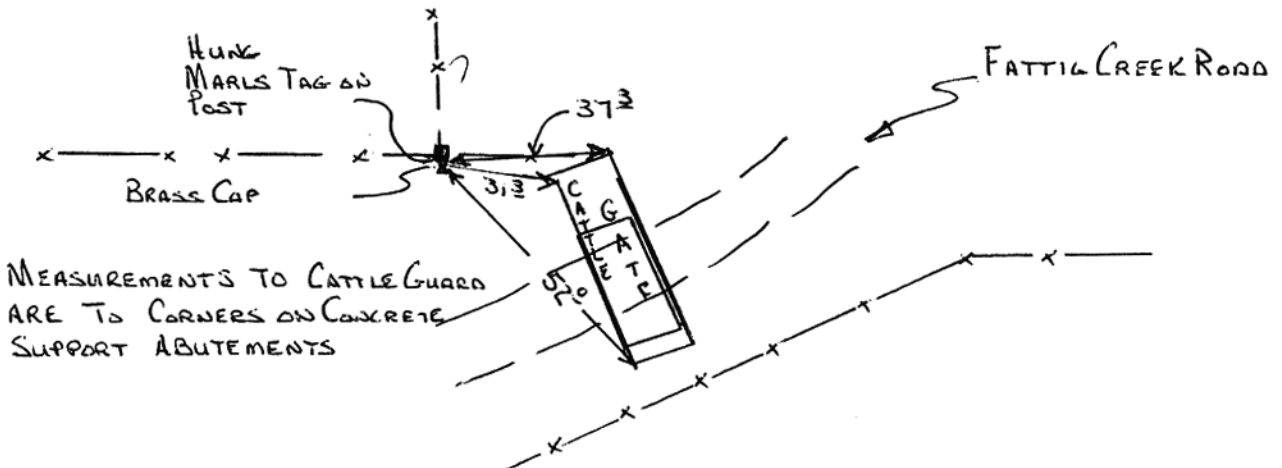
ORIGINAL RECORD : (1904 - F. CUMMING) SET SANDSTONE 20 x ? x ? 15 INS. IN THE GROUND - WITH 3 NOTCHES ON S. AND 1 NOTCH ON E. FROM WHICH - A PINE 8" DIA BEARS N65 1/2° E 2.00 CHNS. - A PINE BEARS S ? E 1.77 CHNS - PINE 10" DIAM. BEARS S 88 1/4° W 3.47 CHNS. - A PINE 24 INS. DIAM BEARS N ? W 4.52 CHNS (NOTE: ORIGINAL NOTE COPY WAS VERY FAINT AND UNREADABLE IN PORTIONS OF DESCRIPTION)

SUBSEQUENT RECORD : (1943 - BANDY & PARKER) FOUND SANDSTONE 18 x 8 x 4 INS PARTLY IMBEDDED IN THE GROUND ON SW SIDE OF FENCE COR. AT POINT FOR CORNER WITH ORIGINAL STONE BURIED ALONGSIDE SET AN IRON POST 3 FT LONG 2 INS DIA. 30 INS. IN GROUND WITH BRASS CAP MARKED.

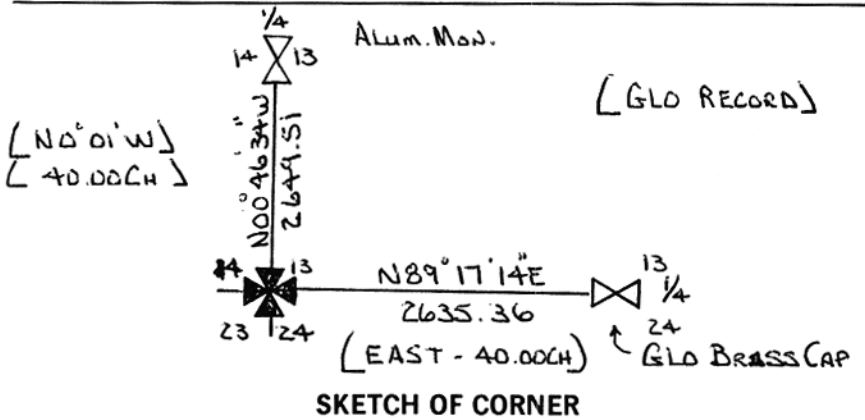
T6N R26E
S14 | S13
S23 | S24
1943

FOUND AND REFERENCED ALL BEARING TREES EXCEPT IN NE QUAD.

EVIDENCE FOUND : FOUND STANDARD GLO BRASS CAP AS DESCRIBED ABOVE. CORNER IN GOOD CONDITION. SETS TIGHT AGAINST THE S. SIDE OF A RAILROAD TIE FENCE COR POST.



BEARING BASIS = S. LINE SW 1/4 SEC 13 - T6N - R26E = N89°17'14"E



CERTIFICATION

I, _____ certify the information shown herein is true and correct.

Signature Ground Party: _____

I, SCOTT BLOOMER RABER SCOTT certify that this Corner Record correctly represents the monumented by me or under my direction in compliance with the "Corner Recordation Act" (70-22-101, et seq., M.C.A.)

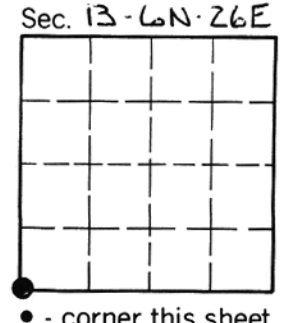
Signature of Surveyor & Seal: Scott Bloomer

Date: 6/24/89 Reg. No. 9005

Employer: SELF (BILLINGS MT)

Office of Clerk and Recorder, County of Musselshell. This "corner record" was filed for record on June 30, 1989 at 11:10 AM was noted on the cross-index plat and is assigned page No. _____, in book No. _____

Francis E. Dawson Jane E. Mang Deputy County Official



Cross Index No. N-21 T. 6N R. 26E P.M.M.