

INSTRUCTIONS

1. Original and/or subsequent record used to evaluate the corner position.
2. Description of evidence found, note discrepancies in the record, state method of establishing lost or obliterated corners.
3. Description of monument and accessories set to perpetuate the corner position.
4. Sketch of corner, show all pertinent data which can best be shown in a sketch example, corner marking, topography ties, position of accessories, etc.
5. Certification must be signed and sealed by Land Surveyor registered in the State of Montana.
6. Fill in Cross Index & Section Diagram at bottom of sheet.

CERTIFIED CORNER RECORDATION

Corner EAST 1/4 CORNER SECTION 20 T. 6S R. 35E P.M.M. BIG HORN County

ORIGINAL RECORD:  
APRIL 22, 1902

SET A LIMESTONE 18"x6"x5", 12" IN THE GROUND, FOR 1/4 SECTION CORNER, MARKED 1/4 ON WEST FACE; DIG PITS 18"x18"x12" NORTH AND SOUTH OF STONE 3FT. DISTANT, AND RAISE A MOUND OF EARTH, 3 1/2 FT. BASE, 1 1/2 FT. HIGH, WEST OF THE CORNER.

EVIDENCE FOUND:  
JULY 18, 1989

FOUND STONE WITH 1/4 ON ONE FACE LYING LOOSE AT BASE OF FENCE POST.

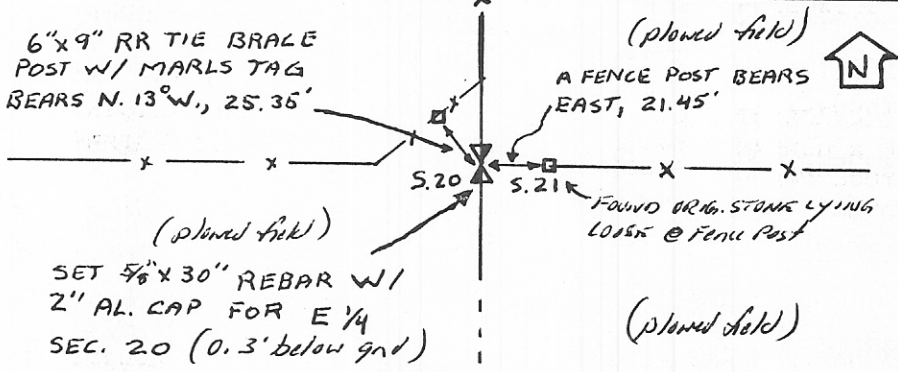
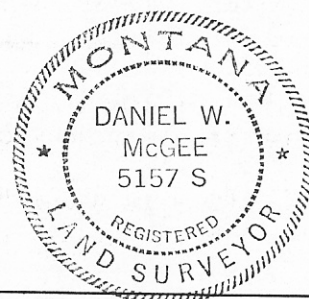
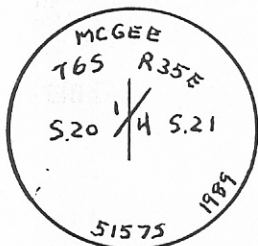
PERPETUATION:

USED FENCES NORTH EAST AND WEST TO ESTABLISH THE CORNER POSITION. SEE SECTION BREAKDOWN ON THE BACK FOR MORE INFORMATION.

AT ESTABLISHED POSITION SET 5/8"x30" REBAR WITH 2" ALUMINUM CAP, MARKED AS SHOWN BELOW, 0.3 FT. BELOW GROUND.

ESTABLISHED THE FOLLOWING REFERENCES;

1. A 6"x9" RAILROAD TIE BRACE POST, WITH MARLS TAG BEARS N. 13° W., 25.35 FT. PUT STONE AT BASE OF BRACE POST.
2. A FENCE POST BEARS EAST, 21.45 FT.



CERTIFICATION

I, \_\_\_\_\_  
certify the information shown herein is true and correct.

Signature Ground Party Chief \_\_\_\_\_

I, DANIEL W. MCGEE  
certify that this Corner Record correctly represents work performed by me or under my direction in compliance with the "Corner Recordation Act" (70-22-101, et seq., M.C.A.)

Signature of Surveyor & Seal \_\_\_\_\_

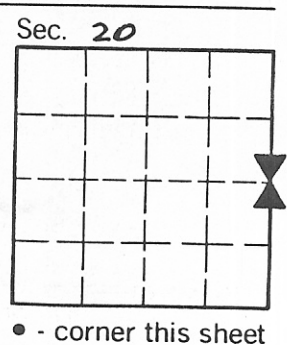
Date: 9/29/90 Reg. No. 5157S

Employer: MCGEE AND COMPANY 89-637

Office of Clerk and Recorder, County of Butte This "corner record" was filed for record on OCT 2 1990 @ 9:25 am was noted on the cross-index plat and is assigned page No. 460, in

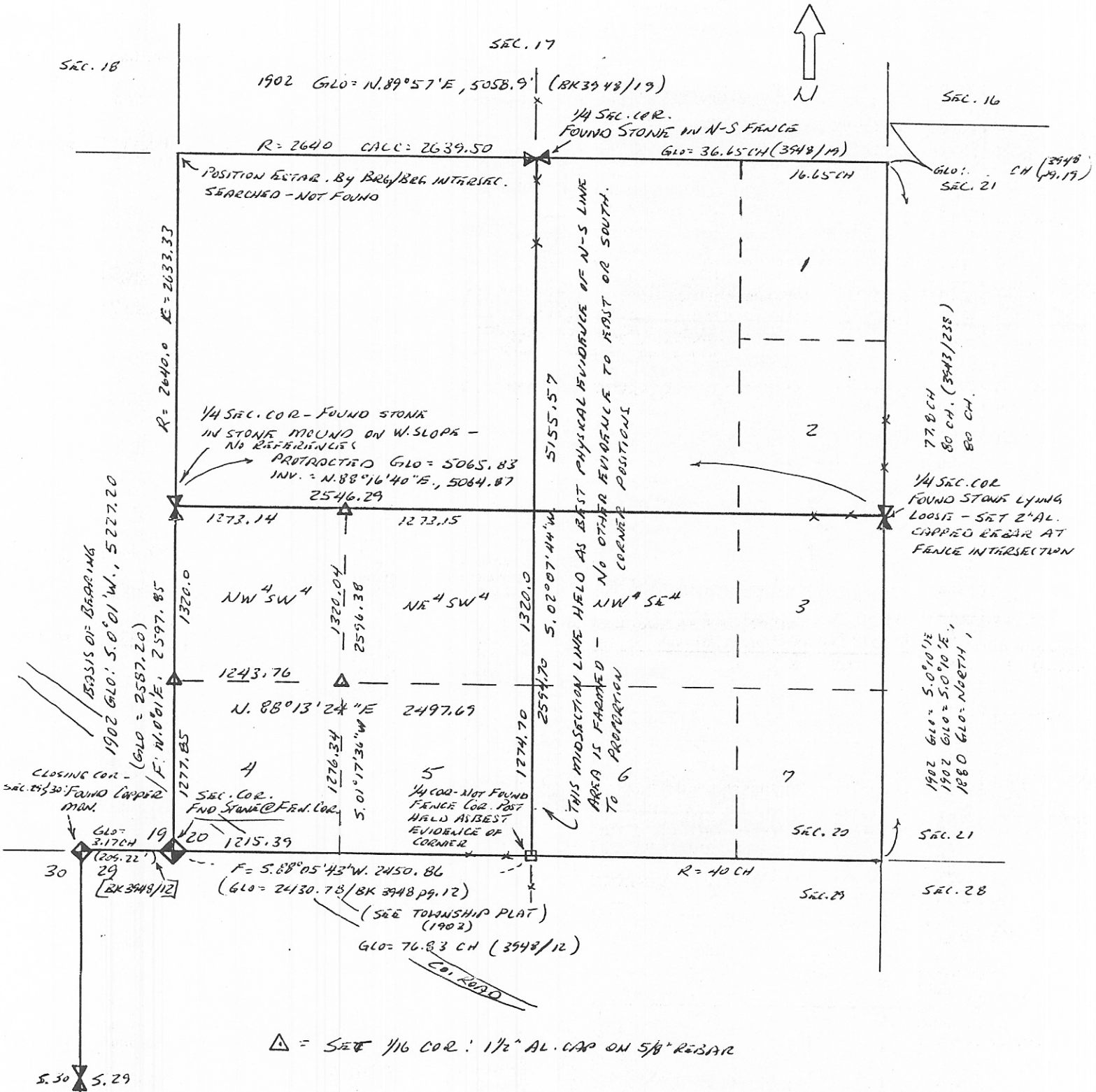
book No. 2  
**MCGEE and COMPANY**  
 Daniel W. McGee, P.L.S.  
 1925 Pinyon Drive  
 Laurel, MT 59044  
 406/628-7703

Daniel W. McGee  
 County Official



Cross Index No. P-9 T. 6S R. 35E P.M.M.

SECTION 20, T. 6 S., R. 35 E.  
BIG HORN CO., MONTANA



△ = SET 1/16 COR. 1 1/2" AL. CAP ON 5/8" REBAR

McGEE and COMPANY  
Daniel W. McGee, P.L.S.  
1925 Pinyon Drive  
Laurel, MT 59044  
406/628-7703  
P.M. 89-637