

CERTIFIED LAND CORNER RECORDATION

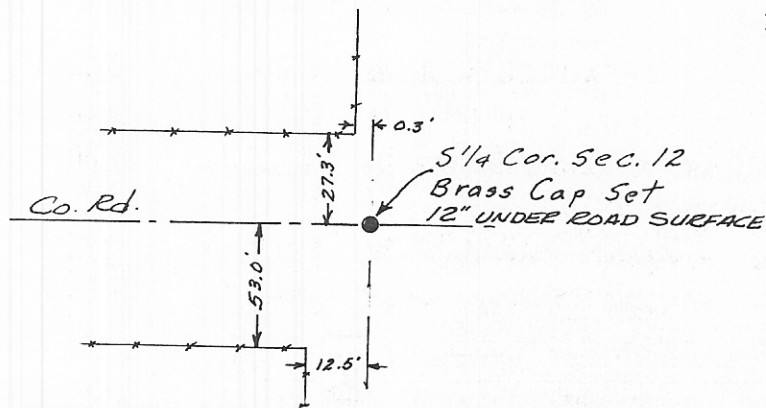
DESCRIPTION OF CORNER EVIDENCE FOUND, AND ORIGINAL RECORD (IF KNOWN)

Original Notes: Sandstone 16"x10"x8", 11 ins. in ground.
Marked 1/4 on North face.

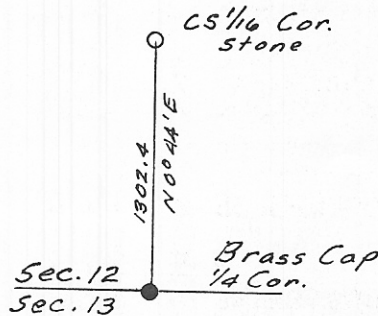
Original Corner not found; Set Brass Cap according to evidence on ground and deeds of record.

DESCRIPTION OF MONUMENT AND ACCESSORIES ESTABLISHED TO PERPETUATE THE ORIGINAL LOCATION OF THIS CORNER:

Date of work: March 1974



SKETCH, WITH COURSE AND DISTANCE TO ADJACENT CORNERS IF DETERMINED IN THIS SURVEY. (MAY SKETCH OR PASTE REPRODUCTION ON REVERSE SIDE.)



Surveyor's Seal

I, David H. Bick
certify that the information shown herein is true and correct.
David H. Bick
Signature of Ground Party Chief

I, Elmer E. Treftz
certify that I have carefully performed or reviewed the work done on the diagrammed corner as reported on this recordation form and approve the same.
Elmer E. Treftz
Signature of Surveyor

DIAGRAM OF CORNER:



● = Corner recorded on the sheet
1/4 Cor. Sec. 12 & 13
T. 6 S. - R. 35 E., P. M. M.
Big Horn County, Mont.

2525-5
Registration Number

Office of Clerk and Recorder, County of Big Horn

249441

This "corner record" was filed for record on the 12th day of Jan 1974, was noted on the cross-index plat and is signed page No. 150, in book No. 1

JOYCE LIPPERT, County Clerk

By Deborah Kempf
County Official Deputy

Cross Index No. J-23 T. 6 S. R. 35 Mer.