

1. Original and/or subsequent record used to evaluate the corner position.
2. Description of evidence found, note discrepancies in the record, state method of establishing lost or obliterated corners.
3. Description of monument and accessories set to perpetuate the corner position.
4. Sketch of corner, show all pertinent data which can best be shown in a sketch example, corner marking, topography ties, position of accessories, etc.
5. Certification must be signed and sealed by Land Surveyor registered in the State of Montana.
6. Fill in Cross Index & Section Diagram at bottom of sheet.

CERTIFIED CORNER RECORDATION

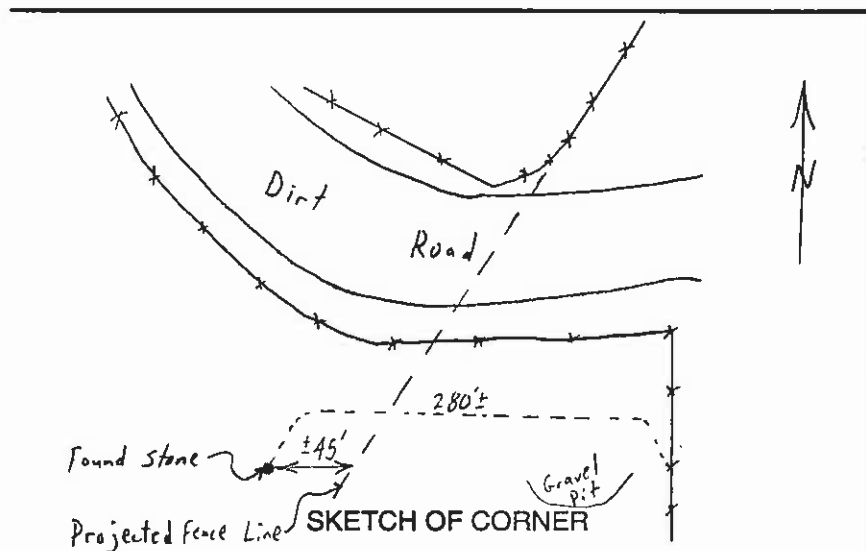
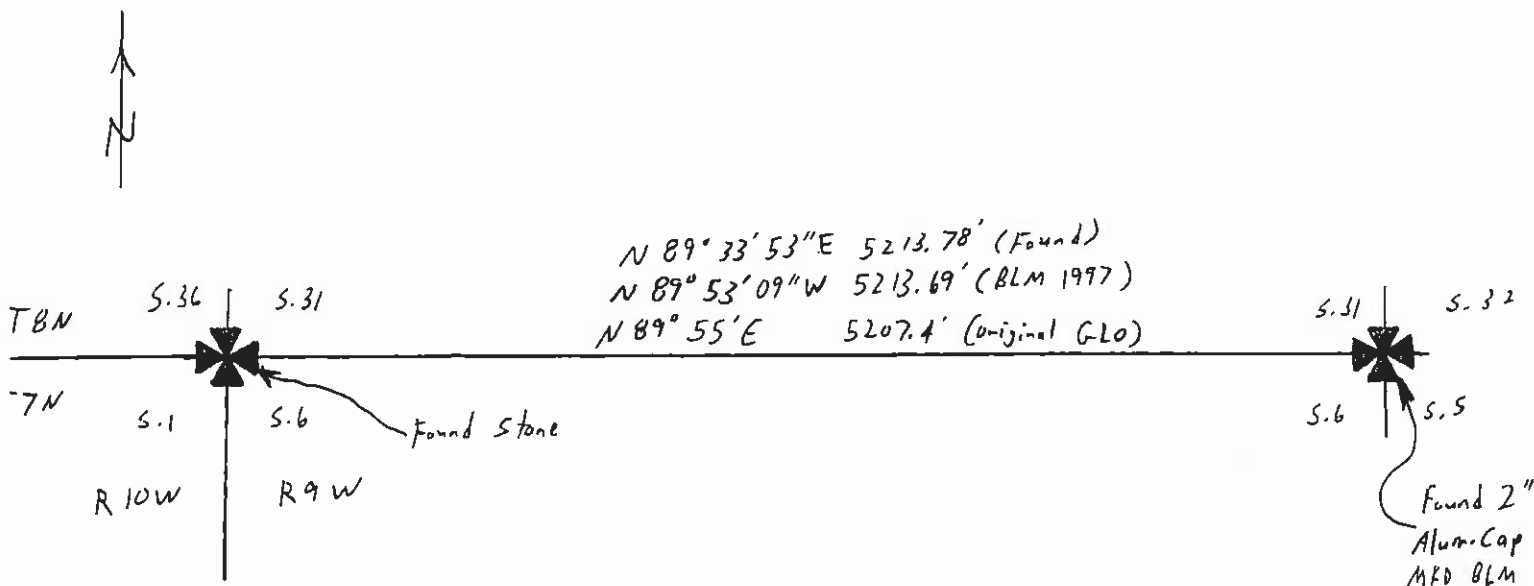
Corner: Section Corner 1,6,31 & 36 T. 7N R. 9W P.M.M. Powell County

7N 10W
 8N 10W
 8N 9W

ORIGINAL RECORD (1868): Set a post with pits and charred stake.

EVIDENCE FOUND: Found stone, notches visible, as per BLM July 1997 Advance Survey Plat.

PERPETUATION: None.



CERTIFICATION

I, Glenn R. Howard
 certify the information shown herein is true and correct.

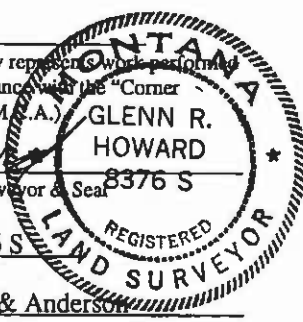
Glenn R. Howard
 Signature Ground Party Chief

I, Glenn R. Howard
 certify that this Corner Record correctly represents work performed by me or under my direction in compliance with the "Corner Recordation Act" (70-22-101, et seq., M.C.A.)

Glenn R. Howard
 Signature of Surveyor & Seal

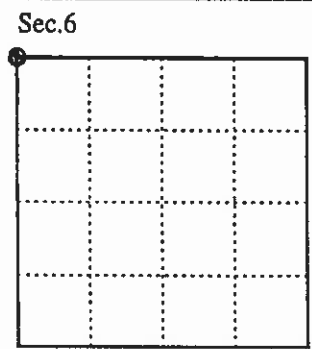
Date: 12-31-97 Reg. No. 8376 S

Employer: Druyvestein Johnson & Anderson



144509
 Office of Clerk and Recorder, County of Powell. This "corner record" was filed for record on January 2nd, 1998 @ 11:25 A.M. was noted on the cross index plat and is assigned page No. _____, in book No. _____

Heidi M. [Signature]
 County Official



Cross Index No. <u>A-1</u>	T. <u>7N</u>	R. <u>9W</u>	PMM
<u>Z-25</u>	<u>8N</u>	<u>10W</u>	
<u>A-25</u>	<u>7N</u>	<u>10W</u>	
<u>Z-1</u>	<u>8N</u>	<u>9W</u>	

•- corner this sheet