

**CERTIFIED LAND CORNER RECORDATION**

DESCRIPTION OF CORNER EVIDENCE FOUND, AND ORIGINAL RECORD (IF KNOWN)

Oct. 1868 Field Notes

Set 1/4 Sec. Cor. a post in mound of earth with pits charred stake (?) as per instructions  
 (Note: 8.06 chains or 532± ft. east from gully to 1/4 Cnr. location)

No physical evidence found in field.

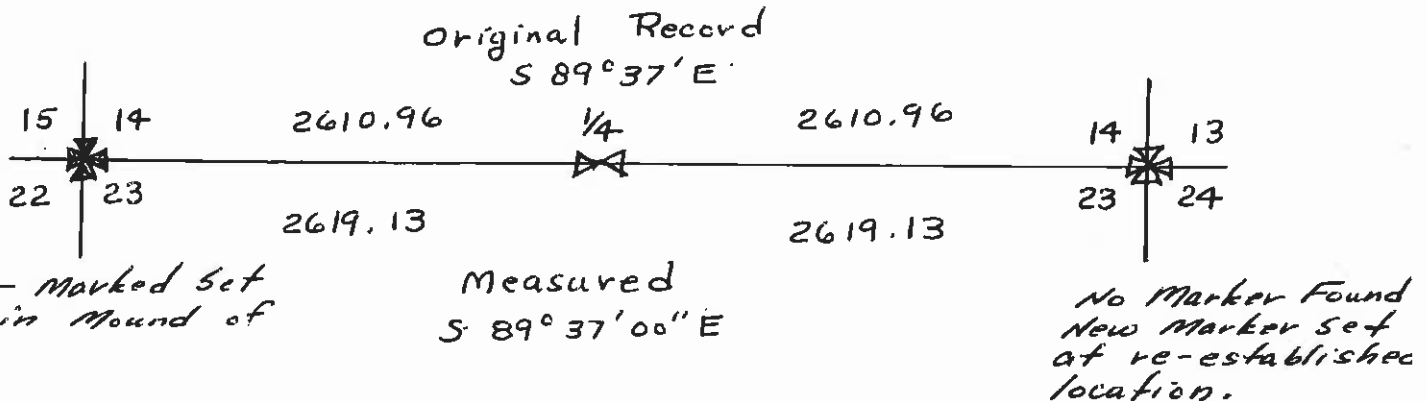
DESCRIPTION OF MONUMENT AND ACCESSORIES ESTABLISHED TO PERPETUATE THE ORIGINAL LOCATION OF THIS CORNER:

Date of work: 8-24-77

set 24" x 5/8" rebar with 2" Alum. Survey Cap stamped R.G. Masters RLS 821 S - inscribed 1/4  $\frac{14}{23}$  T7N R9W, with mound of stones adj. west of Cnr.

(Note: 1/4 Cnr. as set is 530± ft. east of gully)

SKETCH, WITH COURSE AND DISTANCE TO ADJACENT CORNERS IF DETERMINED IN THIS SURVEY. (MAY SKETCH OR PASTE REPRODUCTION ON REVERSE SIDE.)



Surveyor's Seal

I, RAY G. MASTERS  
 certify that the information shown herein is true and correct.

Signature of Ground Party Chief

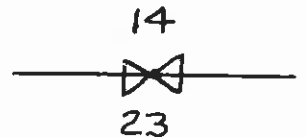
I, RAY G. MASTERS  
 certify that I have carefully performed or reviewed the work done on the diagrammed corner as reported on this recordation form and approve the same.

*Ray G. Masters*  
 Signature of Surveyor

821 S  
 Registration Number

DIAGRAM OF CORNER:

N. 1/4 Cnr.



T7N R9W

= Corner recorded on the sheet

Office of Clerk and Recorder, County of Powell

This "corner record" was filed for record on the 2nd day of September 1977, was noted on the cross-index plat and is

assigned page No. \_\_\_\_\_, in book No. \_\_\_\_\_

County Official