

INSTRUCTIONS

1. Original and/or subsequent record used to evaluate the corner position.
2. Description of evidence found, note discrepancies in the record, state method of establishing lost or obliterated corners.
3. Description of monument and accessories set to perpetuate the corner position.
4. Sketch of corner, show all pertinent data which can best be shown in a sketch example, corner marking, topography ties, position of accessories, etc.
5. Certification must be signed and sealed by Land Surveyor registered in the State of Montana.
6. Fill in Cross Index & Section Diagram at bottom of sheet.

CERTIFIED CORNER RECORDATION

Corner Sections 7, 18 12 & 13 T. 7 N. R. 14 & 15 W. P.M.M. Granite County

ORIGINAL RECORD: (1873 G.L.O.) Not recovered.

SUBSEQUENT RECORD: (1987 B.L.M.)

Set an aluminum post, 30 ins. long, 2½ ins. diam., 22 ins. in the ground, with aluminum cap mkd. [as shown] from which the new bearing trees:

- A pine, 10 ins. diam., bears N. 6° E., 48 lks. dist., mkd. T7N R14W S18 BT.
- A pine, 8 ins. diam., bears S. 77° E., 81 lks dist., mkd. T7N R15W S24 BT.
- A pine, 10 ins. diam., bears S. 54° W., 29 lks. dist., mkd. T7N R15W S24 BT.
- A pine, 10 ins. diam., bears N. 26° W., 26 lks. dist., mkd T7N R15W S13 BT.

The original monument, a sandstone, 18 x 8 x 5 ins., mkd. with 6 grooves on a face and 3 grooves on the adjacent face, was found lying loose nearby.

Bury the original stone alongside and raise a collar of stone, 3 ft. diam., around the aluminum post.

EVIDENCE FOUND:

Found ¾" Aluminum Cap, 0.65' above ground in mound of stone, from which:

- A RR tie fence post bears N45°E, 0.4 feet dist.
- A 4 x 4 ins. concrete R/W monument bears N45°W, 0.5 feet dist.

An old fence line runs to the east with only RR ties left as posts (no cross wires).

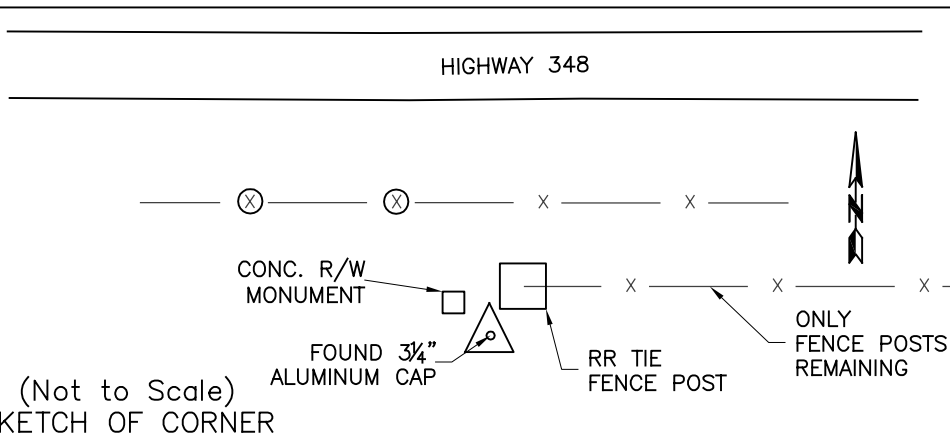
PERPETUATION:

Left monument as found.

Date of Survey: October, 2009.



NAD 83 coordinates for this corner:
 Latitude = 46°22'01.10733"N Longitude = 113°24'38.50958"W
 NOTE: These coordinates are to be used as a search tool only.



CERTIFICATION

I, Steve Cummings
 certify the information shown herein is true and correct.

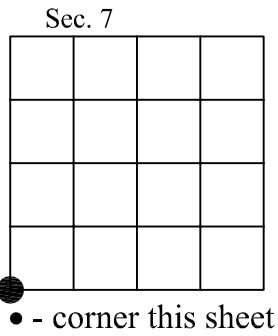
 Signature Ground Party Chief

I, Kurt A. Luebke
 certify that this Corner Record correctly represents work performed by me or under my direction in compliance with the "Corner Recordation Act" (70-22-101, et seq., M.C.A.)

 Signature of Surveyor & Seal

Date: 10-27-2009 Reg. No. 13237 S

Employer: DJ&A P. C.



Cross Index No. J-25 T. 7 N. R. 15 W. PMM
 Cross Index No. J-1 T. 7 N. R. 14 W. PMM