

**CLASSIFIED LAND CORNER RECORDS**  
(REFERENCE FSM 7153.53)

31325

RI-7150-1

DESCRIPTION OF CORNER EVIDENCE FOUND, AND ORIGINAL RECORD (IF KNOWN)

Original notes state; Set a wood post , 4 ft. long, 3 ins. square 12 ins. in the ground, raised mound of earth and dug pits.

Found the remains of an old wood post, no definite marks found.

Reestablished the corner position from record calls as shown on the sketch below.

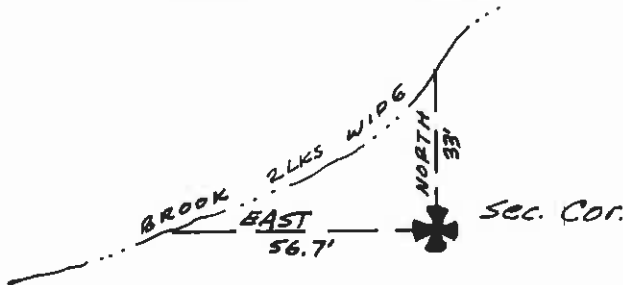
DESCRIPTION OF MONUMENT AND ACCESSORIES ESTABLISHED TO PERPETUATE THE ORIGINAL LOCATION OF THIS CORNER:

Date of work: 9-12-79

At the corner point set a 1" x 18" iron pipe with a 2" brass cap buried 18" deep. Placed a 14"x12"x10" stone alongside the corner along with the old wood post. Mkd. the cap as shown.



SKETCH, WITH COURSE AND DISTANCE TO ADJACENT CORNERS IF DETERMINED IN THIS SURVEY. (MAY SKETCH OR PASTE REPRODUCTION ON REVERSE SIDE.)



Surveyor's Seal



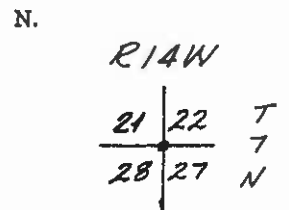
I, William D. Bayer certify that the information shown herein is true and correct.

William D. Bayer  
Signature of Ground Party Chief

I, William D. Bayer certify that I have carefully performed or reviewed the work done on the diagrammed corner as reported on this recordation form and approve the same.

William D. Bayer  
Signature of Surveyor

DIAGRAM OF CORNER:



• = Corner recorded on the sheet

3321S  
Registration Number

Office of Clerk and Recorder, County of Granite

This "corner record" was filed for record on the 12<sup>th</sup> day of Sept. 1979, was noted on the cross-index plat and is assigned page No....., in book No.....

M. G. Sauren, Deputy Clerk  
County Official

Cross Index No. R-13 T. 7N R. 14W Mer.