

INSTRUCTIONS

1. Description of evidence found, note discrepancies in the record, state method of establishing lost or obliterated corners.
2. Description of monument and accessories set to perpetuate the corner position.
3. Sketch of corner, show all pertinent data which can best be shown in a sketch example, corner marking, topography ties, position of accessories, etc.
4. Certification must be signed and sealed by Land Surveyor registered in the State of Montana.
5. Fill in Cross Index & Section Diagram at bottom of sheet.

CERTIFIED CORNER RECORDATION

Corner Quarter Corner Sec. 23 & 26 T. 7N R. 14W P.M.M. Granite County

FOUND: Painted centerline of Roack Creek Road and fence running North. Montana Hwy. Dept. notes indicated $\frac{1}{4}$ Cor. to be 20.7 feet left of centerline, and in line with fence to north.

ORIGINAL: "Set a sandstone 13 x 8 x 7 in. 8 inches in the ground for $\frac{1}{4}$ Sec. Cor. marked $\frac{1}{4}$ on the N side."

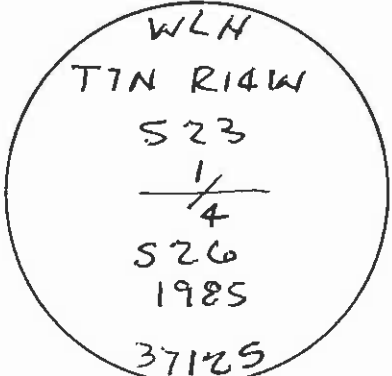
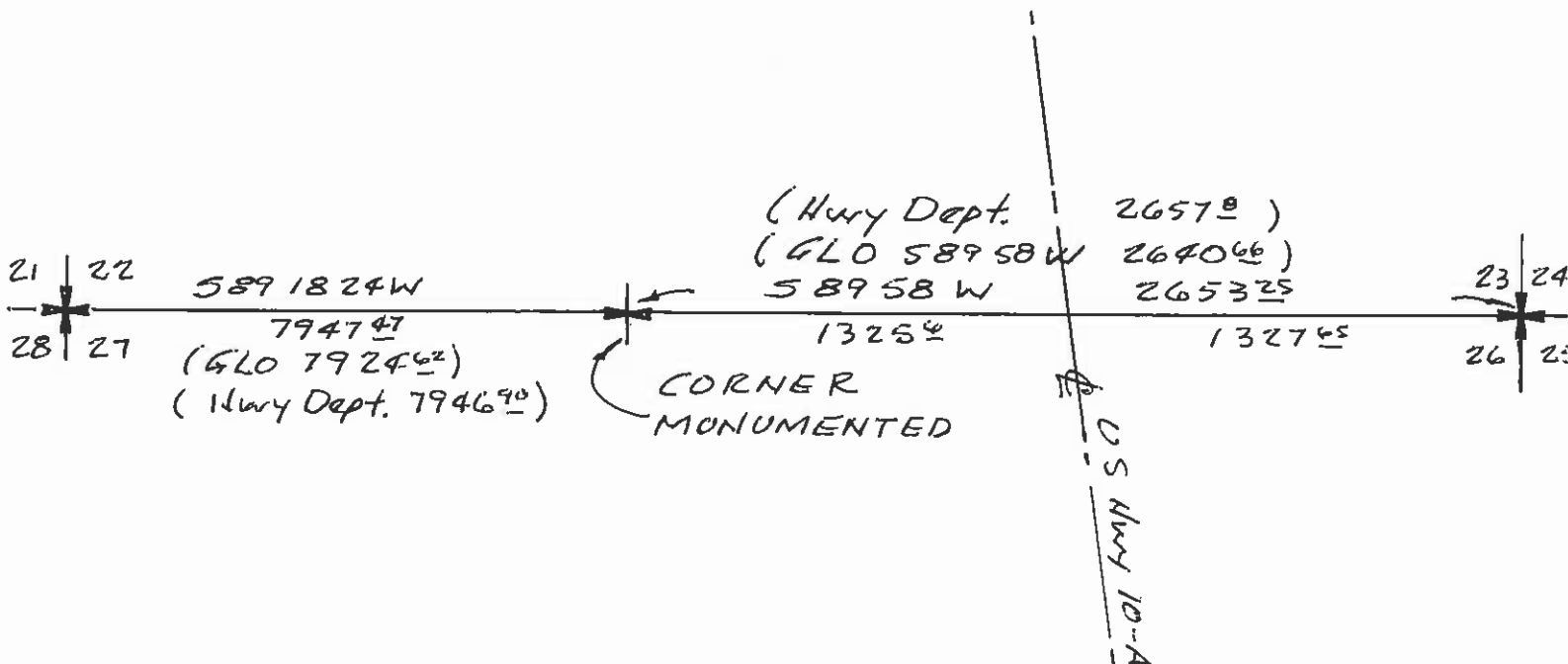
Date of work: May 13, 1985

Established $\frac{1}{4}$ Cor. from Hwy. Dept. Notes:

Set 2" Brass Cap on $\frac{1}{2}$ " galv. iron pipe 0.4 ft. above ground from which:

- (1) R/R Tie Fence Cor. with Brass RLS Tag in south face bears: N 0°49' E 70.82 ft.
- (2) Power Pole with Brass RLS Tag in north face bears: S 8°34' E 27.50 ft.

SEE CERTIFICATE OF SURVEY NO. 209



5499

SKETCH OF CORNER

2" Brass Cap on 1/2 galv. iron pipe

CERTIFICATION

I, Larry Israel
certify the information shown herein is true and correct.

Signature Ground Party Chief

I, W. L. Higginbotham
certify that this Corner Record correctly represents work performed by me or under my direction in compliance with the "Corner Recordation Act" 80-2-11, et seq. M.C.A.

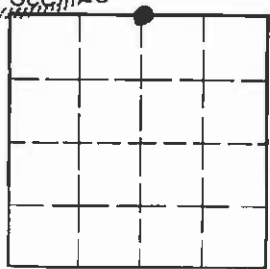
W. L. Higginbotham
Signature of Registered Professional Land Surveyor

Date: 5-30-85 Reg. No. 3712 BS129

Employer: W. L. Higginbotham

Office of Clerk and Recorder, County of Granite. This "corner record" was filed for record on June 7, 1985 was noted on the cross-index plat and is assigned page No. _____, in book No. _____

Mavis Morrison
County Official



Cross Index No. R-19 T. 7N R. 14W P.M.M.

• - corner this sheet