

**INSTRUCTIONS**

1. Original and/or subsequent record used to evaluate the corner position.
2. Description of evidence found, note discrepancies in the record, state method of establishing lost or obliterated corners.
3. Description of monument and accessories set to perpetuate the corner position.
4. Sketch of corner, show all pertinent data which can best be shown in a sketch example, corner marking, topography ties, position of accessories, etc.
5. Certification must be signed and sealed by Land Surveyor registered in the State of Montana.
6. Fill in Cross Index & Section Diagram at bottom of sheet.

**CERTIFIED CORNER RECORDATION**

Corner W. 1/4 corner section 36

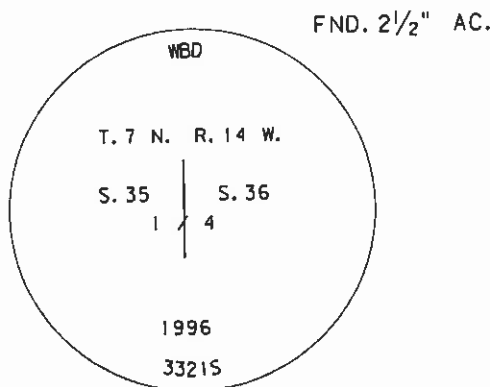
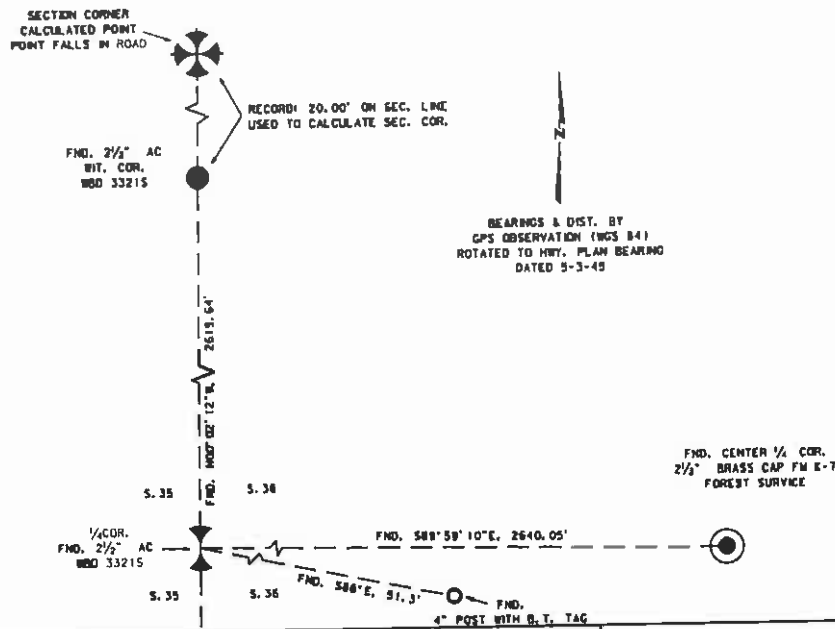
T. 7N., R. 14W. P.M.M. GRANITE County

**RECORD**

Shown on Plat of Philipsburg Ranger Station Site as point "FM K-19" (1936)

**FOUND**

2 1/2" AC on 5/8" rebar, 0.3' above grade, marked as shown below. From which a B.T. tag on a 4" fence post bears S.86°E., 51.3'.  
Adjoining corners tied in survey shown below.



**SKETCH OF CORNER**

**CERTIFICATION**

I, Jim A. Turner certify the information shown herein is true and correct.

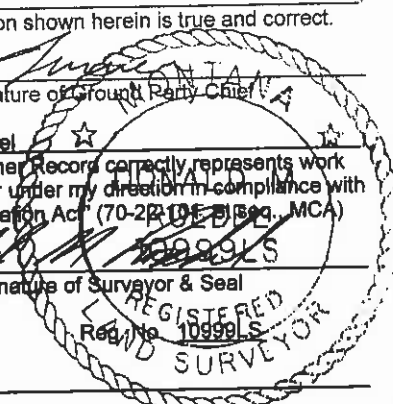
*Jim A. Turner*  
Signature of Ground Party Chief

I, Donald M Roedel certify that this Corner Record correctly represents work performed by me or under my direction in compliance with the "Corner Recordation Act" (70-2210E-1, Sec. MCA)

*Donald M Roedel*  
Signature of Surveyor & Seal

Date: 4/23/01

Employer: MDT



Sec. 36

Office of Clerk and Recorder, County of Granite. This "corner record" was filed for record on May 31, 2001 10:14 AM was noted on the cross-index plat, and is assigned Page No. \_\_\_\_\_ in Book No. \_\_\_\_\_

*Blanche Pederson*  
County Official


• — Corner this sheet

42751

Cross Index No. X.21 T. 7N. R. 14W. PMM