

CERTIFIED LAND CORNER RECORDATION  
(REFERENCE FSM 7153.53)

DESCRIPTION OF CORNER EVIDENCE FOUND, AND ORIGINAL RECORD (IF KNOWN)

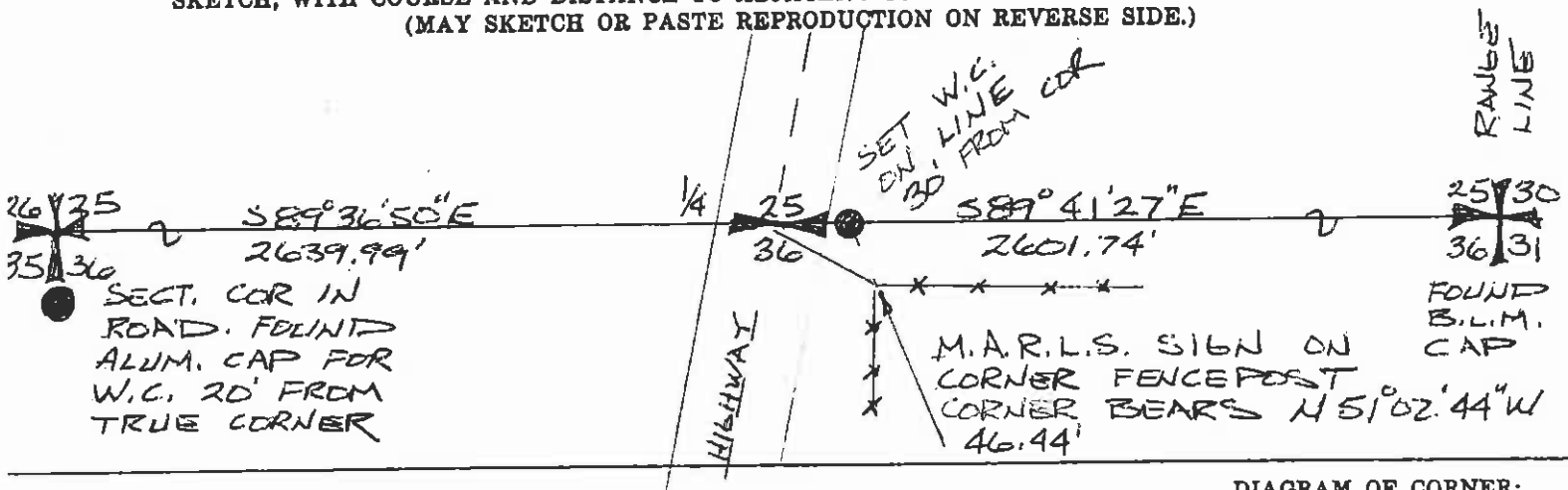
NO ORIGINAL EVIDENCE  
OR ACCESSORIES FOUND

DESCRIPTION OF MONUMENT AND ACCESSORIES ESTABLISHED  
TO PERPETUATE THE ORIGINAL LOCATION OF THIS CORNER:

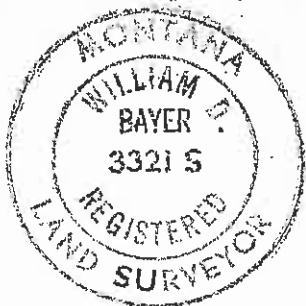
Date of work: 4/2/97

SET 5/8" REBAR W/ ALUM.  
CAP AS MKD. BELOW FOR  
WITNESS CORNER. (CORNER LOCATION  
IN HIGHWAY, ERECTED ROCK  
MOUND AND PUT MARLS,  
SIGN ON FENCE POST AS SHOWN  
BELOW. CORNER RESET USING  
RECORD OF C.O.S. # 68.

SKETCH, WITH COURSE AND DISTANCE TO ADJACENT CORNERS IF DETERMINED IN THIS SURVEY.  
(MAY SKETCH OR PASTE REPRODUCTION ON REVERSE SIDE.)



Surveyor's Seal



I, HANS BOHRNSEN  
certify that the information shown herein is true and  
correct.

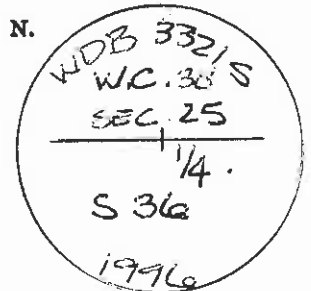
*Hans Bohrsen*  
Signature of Ground Party Chief

I, William D. Bayer  
certify that I have carefully performed or reviewed the  
work done on the diagrammed corner as reported on this  
recordation form and approve the same.

*William D. Bayer*  
Signature of Surveyor

3321 S  
Registration Number

DIAGRAM OF CORNER:



= Corner recorded on the sheet  
WITNESS  
CORNER

Office of Clerk and Recorder, County of Granite

This "corner record" was filed for record on the 3rd day of April 1997, was noted on the cross-index plat and is  
assigned page No. 34992, in book No. 34992

*W. D. Bayer*  
County Official

Cross Index No. 123 T. 7N R. 14W hier.