

CERTIFIED CORNER RECORDATION

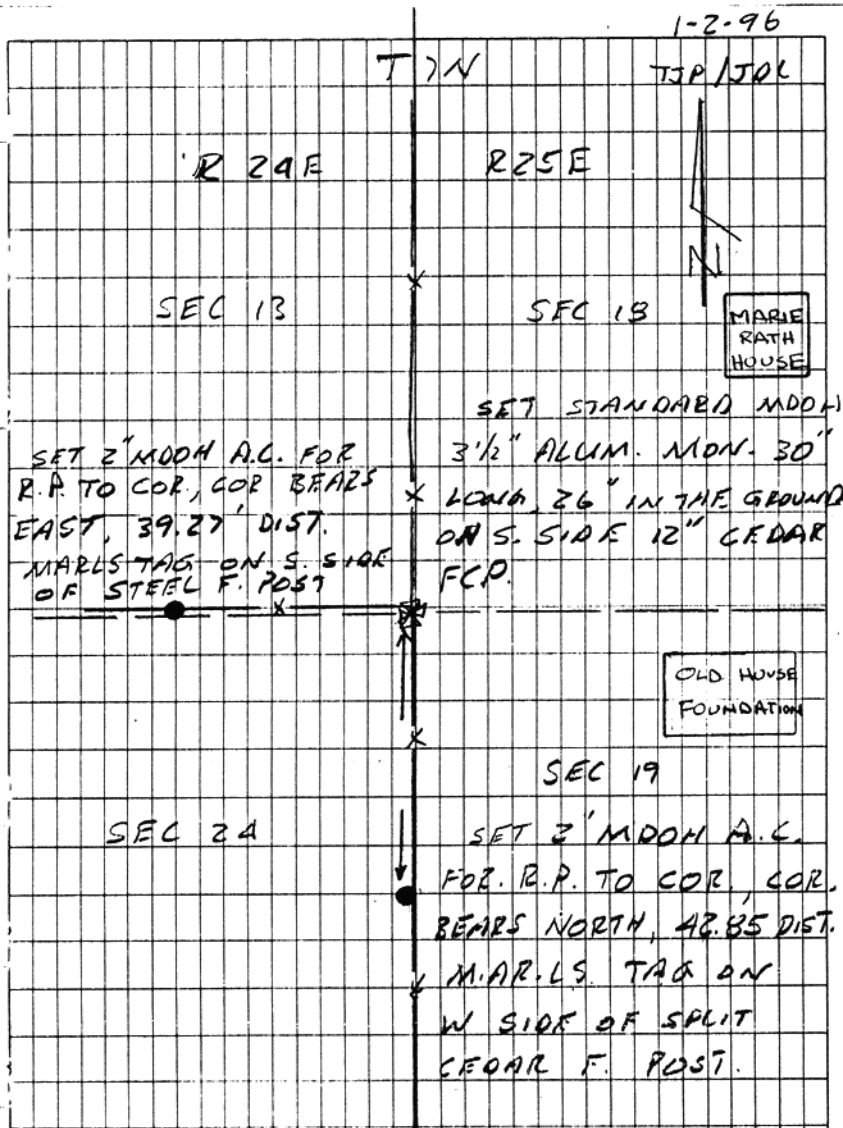
Corner SE Corner Sec 13 T. 7 N. R. 24 E., P.M.M. Musselshell County

Original Record: (1883) Set a Sandstone 20 x 16 x 4 inches, 15 inches in the ground, for Cor. to Sec's, 13, 18, 19 & 24. marked 3 notches on N & S. edges
Dug pits 18 X 18 X 12ins. in each Sec 5 1/2ft dist. and raise a mound of stone, 2 ft. high, 4 1/2 ft. base alongside.

Evidence Found: North - South x West old cedar fence corner post in line with fence to East. Parole testimony provided that the fence corner corresponds to existing buildings on the ground. Marie Raths informed us that her house was in Section 18 and that the old foundation (as shown below) was in Section 19.

Perpetuation: Accepted position of fence corner post and set a standard MDOH 3 1/2 " aluminum monument at South side of corner post for true corner position.

SEE REVERSE SIDE FOR SECTION TIES



SKETCH OF CORNER



PN. 92-837-4

CERTIFICATION

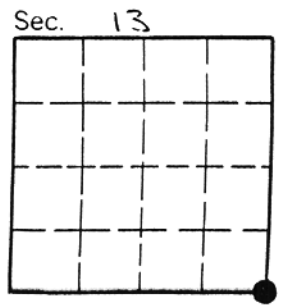
I, SCOTT C. KOTERRA, PLS
certify the information shown herein is true and correct.
Scott C. Koterra
Signature Ground Party Chief

I, DANIEL W. MCGEE
certify that this Corner Record correctly represents work performed by me or under my direction in compliance with the "Corner Recordation Act" (70-22-101, et seq., M.C.A.)
Daniel W. McGee
Signature of Surveyor & Seal


Date: 1/10/96 Reg. No. 5157S
Employer: MCGEE & COMPANY, INC

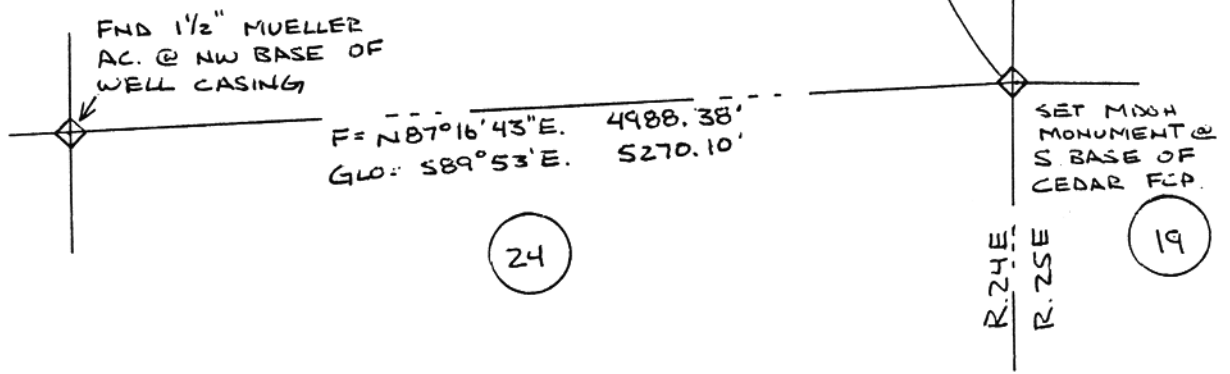
Office of Clerk and Recorder, County of Musselshell. This "corner record" was filed for record on January 11, 1996 2:03PM was noted on the cross-index plat and is assigned page No. _____, in book No. _____

JANE E. MANG
County Official *by Judith B. Hawkins Deputy*



Cross Index No. N-25 T. 7N R. 24E P.M.M.
& N-1 T. 7N R. 25E


 SCALE: 1" = 1000'
 P.T. 92-837-4



F = N87°16'43"E. 4988.38'
 GLO = S89°53'E. 5270.10'

SET MICH
 MONUMENT @
 S. BASE OF
 CEDAR FCP.

R. 24E
 R. 25E

24

19

BASIS OF BEARING:
 F = NORTH, 7866.52'
 GLO = 7920'

GLO = 5280' F = S244.35'

SET MICH
 MONUMENT
 @ SINGLE
 PROPORTION
 POSITION

GLO = 2640' F = 2622.17'

FND 1/2" RBR
 W/ 4PC

R. 24E
 R. 25E

12

7

13

18