

CERTIFIED CORNER RECORDATION

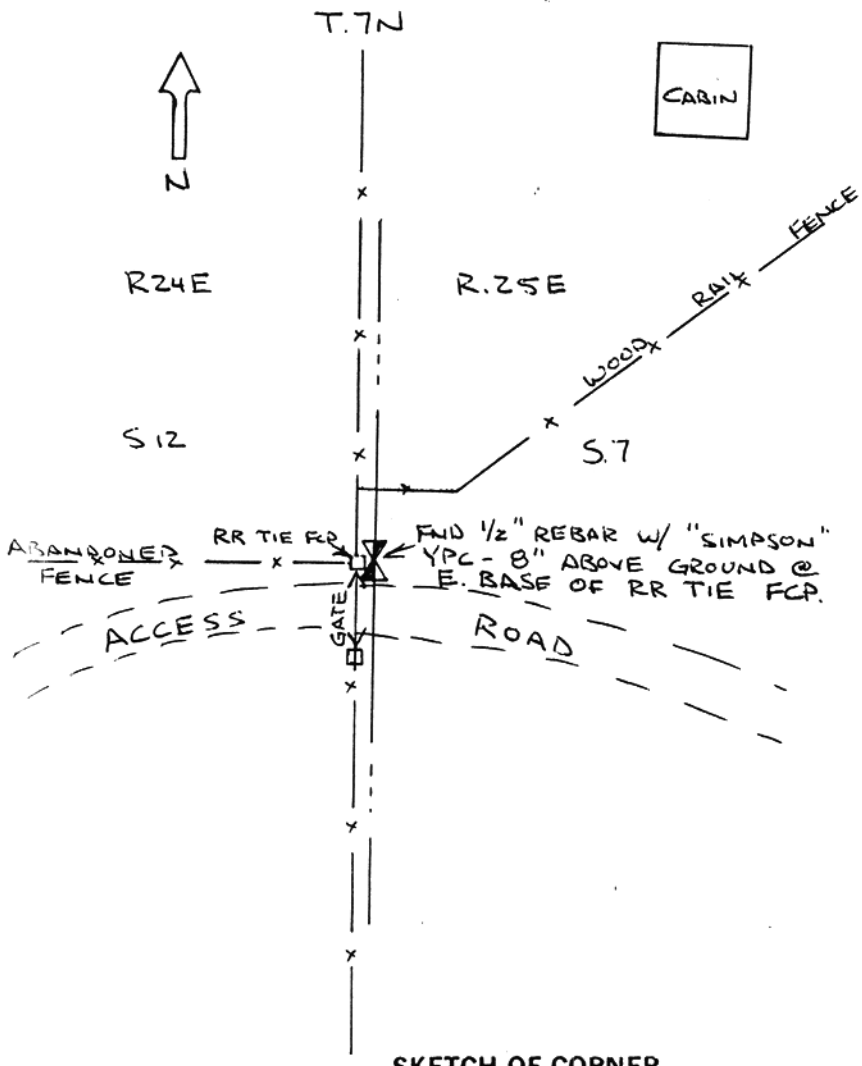
Corner E 1/4 Sec 12 T. 7 N. R. 24 E. ,P.M.M. Musselshell County

Original Record: (1883) Set a Sandstone 30 x 20 x 6 inches, 23 inches in the ground, for 1/4 Sec. Cor. marked 1/4 on W. face, Dug pits 18 X 18 X 12ins N. and S. of stone 5 1/2ft dist raise a mound of earth, 1 1/2ft. high, 3ft. base alongside.

Evidence Found: Found 1/2" rebar with yellow plastic cap marked "Simpson" at East base of RR tie fence corner post.

Perpetuation: Accepted found monument for the 1/4 corner position. See drawing below.

SEE REVERSE SIDE FOR SECTION TIES



P.N. 92-837-4

CERTIFICATION

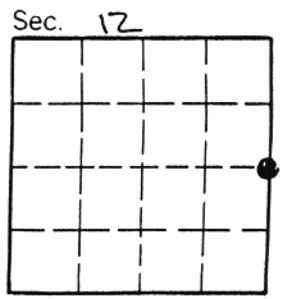
I, SCOTT C. KOTERBA, PLS
 certify the information shown herein is true and correct.
Scott C. Koterba
 Signature Ground Party Chief


I, DANIEL W. MCGEE
 certify that this Corner Record correctly represents work performed by me or under my direction in compliance with the "Corner Recordation Act", 70-22-101, et seq., M.C.A.
Daniel W. McGee
 Signature of Surveyor & Seal

Date: 1/10/96 Reg. No. 5157 S
 Employer: MCGEE & COMPANY, INC.

Office of Clerk and Recorder, County of Musselshell. This "corner record" was filed for record on January 11, 1996 2:02 PM was noted on the cross-index plat and is assigned page No. _____, in book No. _____

JANE B. MANG by *Janeth B. Hawkins*
 County Official Deputy




 SCALE: 1" = 1000'
 P.N. 92-837-4

