

CERTIFIED LAND CORNER RECORDATION

DESCRIPTION OF CORNER EVIDENCE FOUND, AND ORIGINAL RECORD (IF KNOWN)

Not Found:

Set a sandstone 14x10x6 ins. 9 ins. in ground for 1/4 Section corner marked 1/4 on No. face and raised a mound of stone alongside. Pits impracticable.

STATE OF MONTANA : COUNTY OF MUSSELHELL ss. Filed for record this 9th day of Nov 1970 at 8:48 AM in Book 240 Page 103 CLAUDE F. FLETCHER Clerk & Recorder

Re: Christian Spring Subsec & Acres 2020 Grand Ave Broomfield Unit 3

DESCRIPTION OF MONUMENT AND ACCESSORIES ESTABLISHED TO PERPETUATE THE ORIGINAL LOCATION OF THIS CORNER:

Date of work: Nov. 1969

Determined 1/4 corner by single proportion from section corners. Set a 2"x28" galvanized pipe with Brass Cap marked as in diagram below and raised a mound of stone.

- A 7" Pitch Pine fence post with aluminum tag bears S.0°33'W. 45.3'
A 6" Pine with "X" notched in and aluminum tag bears S.22°58'W. 64.4'
A 4"x4" Conc. R/W post bears S.4°13'W. 45.3'
A 6" Cedar corner and gate post with aluminum tag bears N.70°50'W. 70.0'
A highway mile post #148 bears N.22°13'W. 174.3'

SKETCH, WITH COURSE AND DISTANCE TO ADJACENT CORNERS IF DETERMINED IN THIS SURVEY. (MAY SKETCH OR PASTE REPRODUCTION ON REVERSE SIDE.)

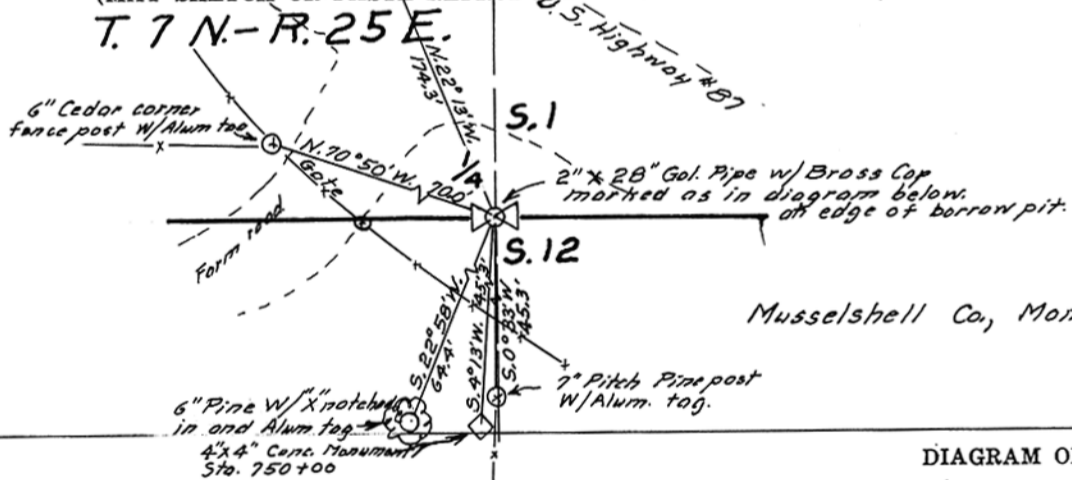


DIAGRAM OF CORNER:

Surveyor's Seal

I, Gerald P. Russell certify that the information shown herein is true and correct.

Gerald P. Russell

Signature of Ground Party Chief

I, L. T. Christian certify that I have carefully performed or reviewed the work done on the diagrammed corner as reported on this recordation form and approve the same.

L. T. Christian

Signature of Surveyor



= Corner recorded on the sheet

301-ES Registration Number

Office of Clerk and Recorder, County of.....

This "corner record" was filed for record on the ..... day of ..... 19....., was noted on the cross-index plat and is assigned page No....., in book No.....

County Official

Cross Index No. E-23 T. 7 N R. 25 E Mer.