

INSTRUCTIONS

1. Original and/or subsequent record used to evaluate the corner position.
2. Description of evidence found, note discrepancies in the record, state method of establishing lost or obliterated corners.
3. Description of monument and accessories set to perpetuate the corner position.
4. Sketch of corner, show all pertinent data which can best be shown in a sketch example, corner marking, topography ties, position of accessories, etc.
5. Certification must be signed and sealed by Land Surveyor registered in the State of Montana.
6. Fill in Cross Index & Section Diagram at bottom of sheet.

214380

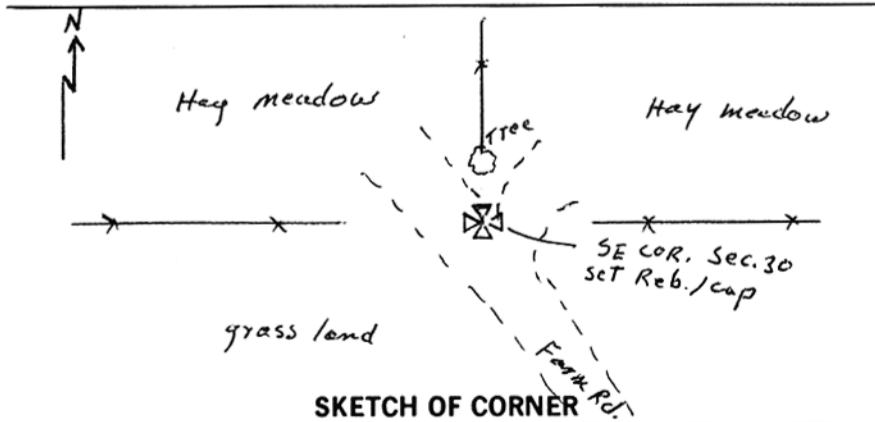
CERTIFIED CORNER RECORDATION

Corner S. E. SEC. 30 T. 7 N. R. 26 E. P.M.M. Musselshell County

1. Original Record 1904: Set a sandstone 22 x 14 x 6 ins. 16 ins. in the ground for cor. of Secs. 29, 30, 31, & 32 marked with 1 notch on S. and 5 notches on E. edges from which
 A pine 24 ins. diam. bears S.73°E. 2.56 chs. marked T.7 N. R.26 E. S.32 B.T.
 A pine 14 ins. diam. bears N.58°E. 54 lks. marked T.7 N. R.26 E. S.29 B.T.
 A pine 15 ins. diam. bears S.76°W. 2.92 chs. marked T.7 N. R.26 E. S.31 B.T.
 A pine 15 ins. diam. bears N.50°W. 3.44 chs. marked T.7 N. R.26. E. S.30 B.T.
2. No evidence found of stone or bearing trees.
3. As nearest and best evidence, at the projected intersection of north, east, and west fences approx. 15 ft. away, set a 5/8" x 30" rebar with a 2 ins. dia. Al. cap marked

T 7 N R 26 E
 S 30 | S 29
 S 31 | S 32
 1995

The corner is in a farm road +/- 150' north of the main east-west road, 17.5' west of an 8" gate post, 12.5' south of a 12" pine gate post, and in line with a north, west, and east fence.



CERTIFICATION

I, Stewart Nash LS 52105
 Signature Ground Party Chief

I, Stewart Nash
 certify that this Corner Record correctly represents work performed by me or under my direction in compliance with the Corner Recordation Act" (70-22-101, et seq., M.C.A.)

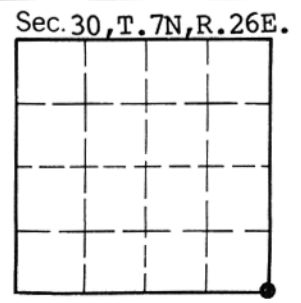
Signature of Surveyor & Seal

Date: 8-9-95 Reg. No. 52105

Employer: SELF

Office of Clerk and Recorder, County of Musselshell. This "corner record" was filed for record on November 13, 1995 10:50 AM was noted on the cross-index plat and is assigned page No. _____, in book No. _____

JANE E. MANG
Ky Norma M Weigmann
 County Official



Cross Index No. V-5 T. 7N R. 26E P.M.M.

• - corner this sheet