

INSTRUCTIONS

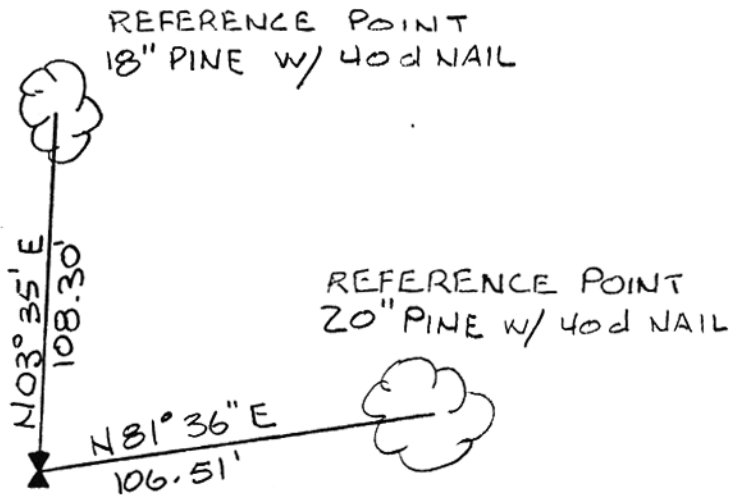
1. Original and or subsequent record used to evaluate the corner position
2. Description of evidence found, note discrepancies in the record, state method of establishing lost or obliterated corners.
3. Description of monument and accessories set to perpetuate the corner position.
4. Sketch of corner, show all pertinent data which can best be shown in a sketch example, corner marking, topography ties, position of accessories, etc.
5. Certification must be signed and sealed by Land Surveyor registered in the State of Montana.
6. Fill in Cross Index & Section Diagram at bottom of sheet.

CERTIFIED CORNER RECORDATION

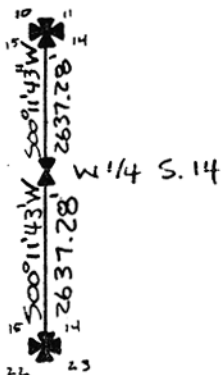
Corner W 1/4 of Section 14 T. 7N. R. 26E. Musselshell County

GLO/BLM RECORD:

Set sandstone 16 x 12 x 6 inches 11 inches in the ground for 1/4 section corner marked "1/4" on west face from which a pine 40 inches diameter bears S73°E 39 links distant marked "1/4 S.14 B.T.", a pine 12 inches diameter bears S69°W 56 links distant marked "1/4 S.15 B.T.".



SET BRASS CAPPED MON. AS SHOWN

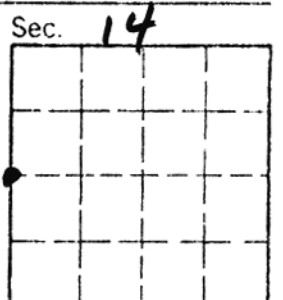


SKETCH OF CORNER

CERTIFICATION
 I, ROBERT HAHN
 certify the information shown herein is true and correct.
 Signature Robert Hahn MONTANA
 Signature of Ground Party Chief
 I, JAMES L. HAHN
 certify that this Corner Record correctly represents work performed by me or under my direction in compliance with the "Corner Recordation Act" (70-22-101, et seq., M.C.A.)
 Signature of Surveyor James L. Hahn REGISTERED SURVEYOR
 Date 10/7/85 Reg. No. 27955
 Employer ATLAS ENGINEERS INC

Office of Clerk and Recorder, County of _____, This "corner record" was filed for record on _____ was noted on the cross-index plat and is assigned page No. _____, in book No. _____

County Official _____



Cross Index No. L-17 T. 7N R. 26E P.M.M.

• - corner this sheet