

INSTRUCTIONS

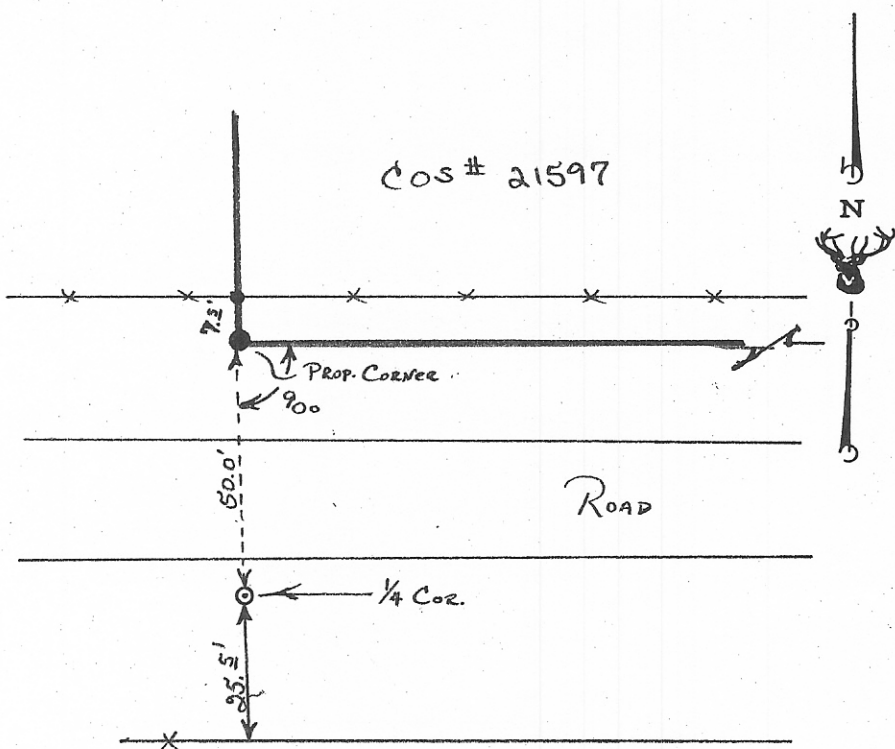
1. Original and/or subsequent record used to evaluate the corner position.
2. Description of evidence found, note discrepancies in the record, state method of establishing lost or obliterated corners.
3. Description of monument and accessories set to perpetuate the corner position.
4. Sketch of corner, show all pertinent data which can best be shown in a sketch example, corner marking, topography ties, position of accessories, etc.
5. Certification must be signed and sealed by Land Surveyor registered in the State of Montana.
6. Fill in Cross Index & Section Diagram at bottom of sheet.

CERTIFIED CORNER RECORDATION

NORTH QUARTER
Corner SECTION 12 T. 7N R. 59E P.M.M. FALLON County

FOUND REBAR & SET 5/8" x 24" REBAR WITH ALUMINUM CAP OVER TOP OF EXISTING REBAR. REFERENCED TO ADJACENT SUBDIVISION CORNERS ACCORDING TO THE SKETCH ON THE REVERSE SIDE. REFERENCED TO NEARBY PHYSICAL OBJECTS ACCORDING TO THE SKETCH BELOW

SEE REVERSE SIDE FOR SECTION BREAKDOWN



SKETCH OF CORNER

FACE OF MONUMENT



CERTIFICATION

I, Charles M. Madler
certify the information shown herein as true and correct.

Charles M. Madler
Signature Ground Party Chief

I, Charles M. Madler
certify that this Corner Record correctly represents work performed by me or under my direction in compliance with the "Corner Recordation Act" (70-22-101, et seq., M.C.A.)

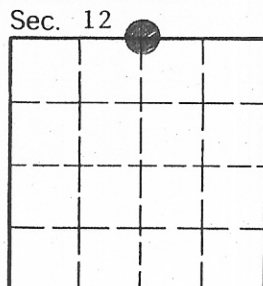
Charles M. Madler
Signature of Surveyor & Seal

Date: 8-11-86 Reg. No. 73275

Employer: Professional Land Services

Office of Clerk and Recorder, County of Fallon. This "corner record" was filed for record on August 25, 1986, at 1:45 p.m. was noted on the cross-index plat and is assigned page No. 325 - 326, in book No. 1 Fee: None

Mary Lee Riety
County Official



Cross Index No. E-23 T. 7N R. 59E P.M.M.

• - corner this sheet