

45816

CERTIFIED LAND CORNER RECORDATION

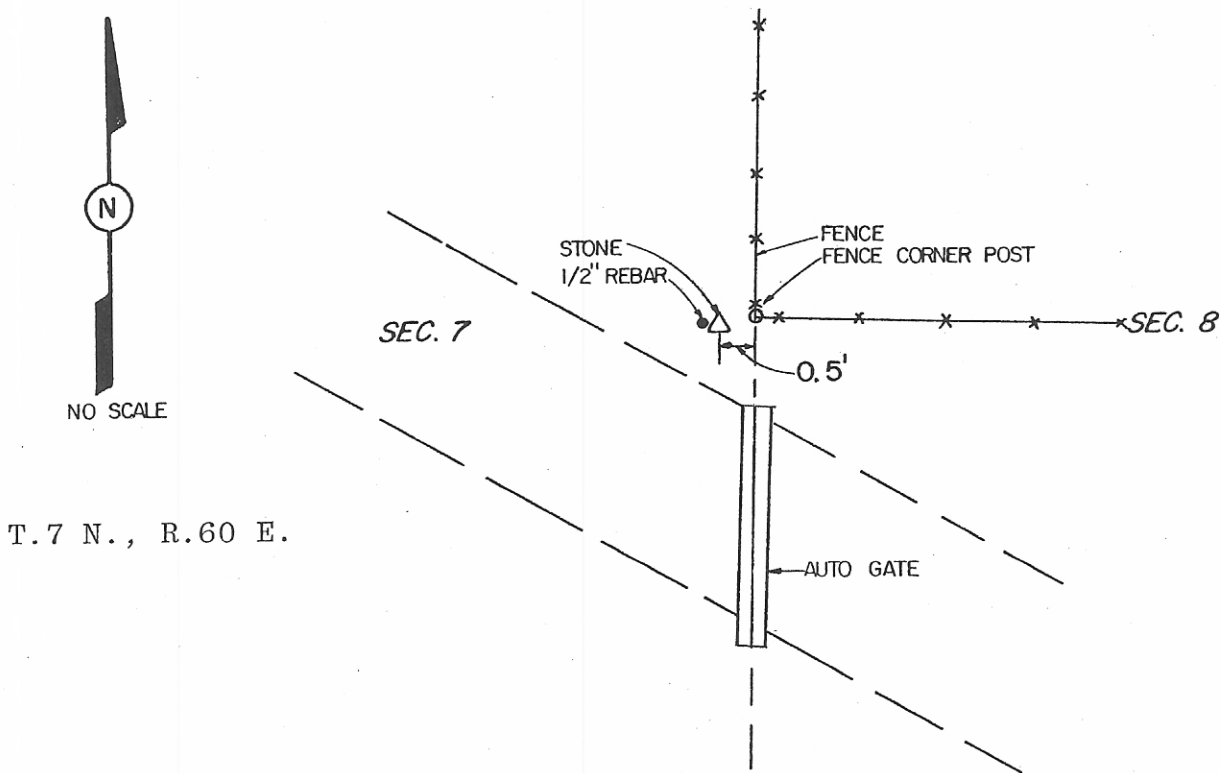
DESCRIPTION OF CORNER EVIDENCE FOUND, AND ORIGINAL RECORD (If known)

Found a set stone with a faint 4 on the west face. Also found a 1/2" reinforcing bar beside the west side of the stone.

DESCRIPTION OF MONUMENT AND ACCESSORIES ESTABLISHED TO PERPETUATE THE ORIGINAL LOCATION OF THIS CORNER:

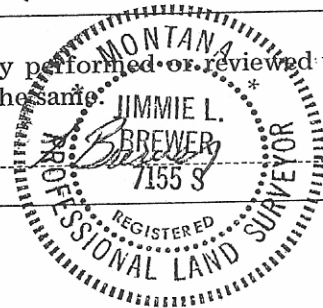
None

SKETCH, WITH COURSE AND DISTANCE TO ADJACENT CORNER IF DETERMINED IN THIS SURVEY. (Make Sketch or Paste Reproduction on Reverse Side.)



I, Jimmie L. Brewer certify that I have carefully performed or reviewed the work done on the diagrammed corner as reported on this recordation form and approve the same.

Signature of Surveyor



7155 S  
Registration No.

STATE OF MONTANA

Office of Clerk and Recorder,

County of Fallon

This "corner record" was filed for record on the 4th day of June, 1985, was noted on the cross-index plat and is assigned page No. 200, in book No. 1 at 2:00 P.M.

Fee: N/C

Cross Index No. <u>6-5</u>	T. <u>7N</u>	R. <u>60E</u>	Mer.
-----	T. -----	R. -----	Mer.
-----	T. -----	R. -----	Mer.
-----	T. -----	R. -----	Mer.
-----	T. -----	R. -----	Mer.
-----	T. -----	R. -----	Mer.
-----	T. -----	R. -----	Mer.

BOOK 1 PAGE 200