

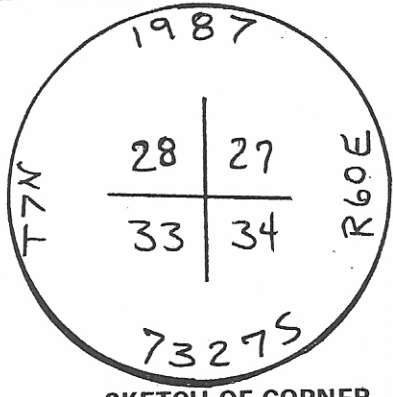
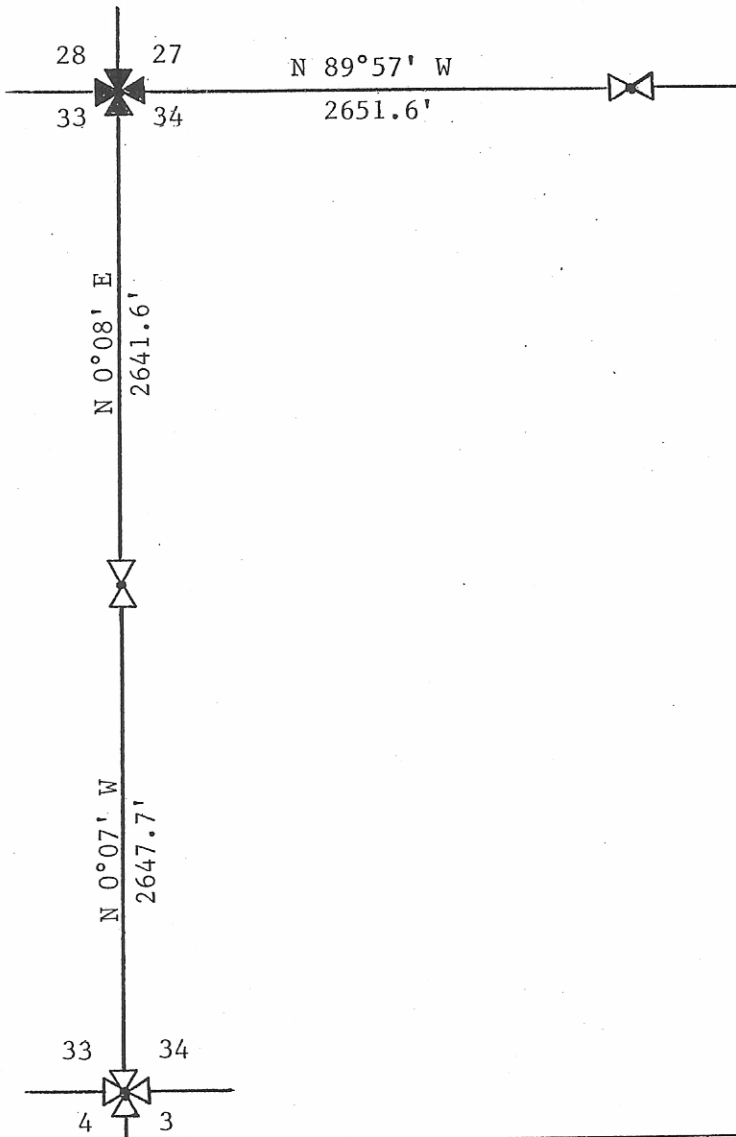
INSTRUCTIONS

1. Original and/or subsequent record used to evaluate the corner position.
2. Description of evidence found, note discrepancies in the record, state method of establishing lost or obliterated corners.
3. Description of monument and accessories set to perpetuate the corner position.
4. Sketch of corner, show all pertinent data which can best be shown in a sketch example, corner marking, topography ties, position of accessories, etc.
5. Certification must be signed and sealed by Land Surveyor registered in the State of Montana.
6. Fill in Cross Index & Section Diagram at bottom of sheet.

CERTIFIED CORNER RECORDATION

Northwest Section
 Corner of Section 34 T. 7 N R. 60 E P.M.M. Fallon County

Found 1" pipe set in the corner of barbed-wire fence. Pipe fit surrounding control and accepted as the NW Section Corner. Set a 2½"x24" Iron Pipe with an aluminum cap marked according to the sketch below. Referenced to surrounding subdivision corners.



SKETCH OF CORNER

53377

CERTIFICATION

I, Charles Madler
 certify the information shown here is true and correct.

Charles Madler
 Signature Ground Party Chief

I, Charles Madler
 certify that the Corner Record correctly represents work performed by me or under my direct supervision in compliance with the "Corner Recordation Act" 1962-101, et seq., M.C.A.

Charles Madler
 Signature of Surveyor

Date: 10-20-87

Employer: Professional Land Services

Office of Clerk and Recorder, County of Fallon. This "corner record" was filed for record on October 22, 1987 at 4:30PM was noted on the cross-index plat and is assigned page No. 374, in book No. 1

Mary Lee Dietz
 County Official

Sec. 34

• - corner this sheet