

INSTRUCTIONS

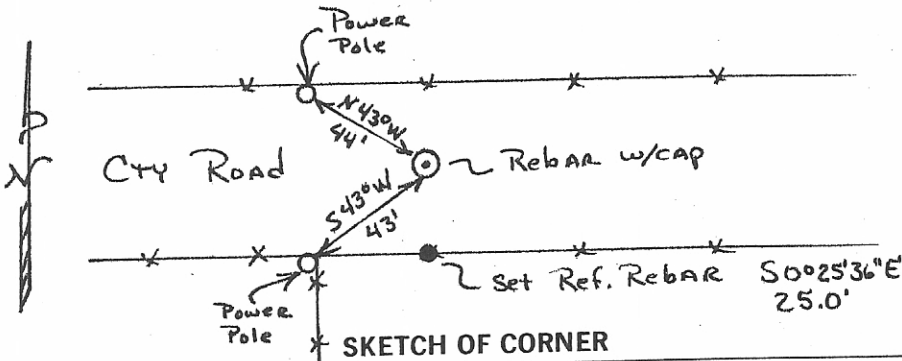
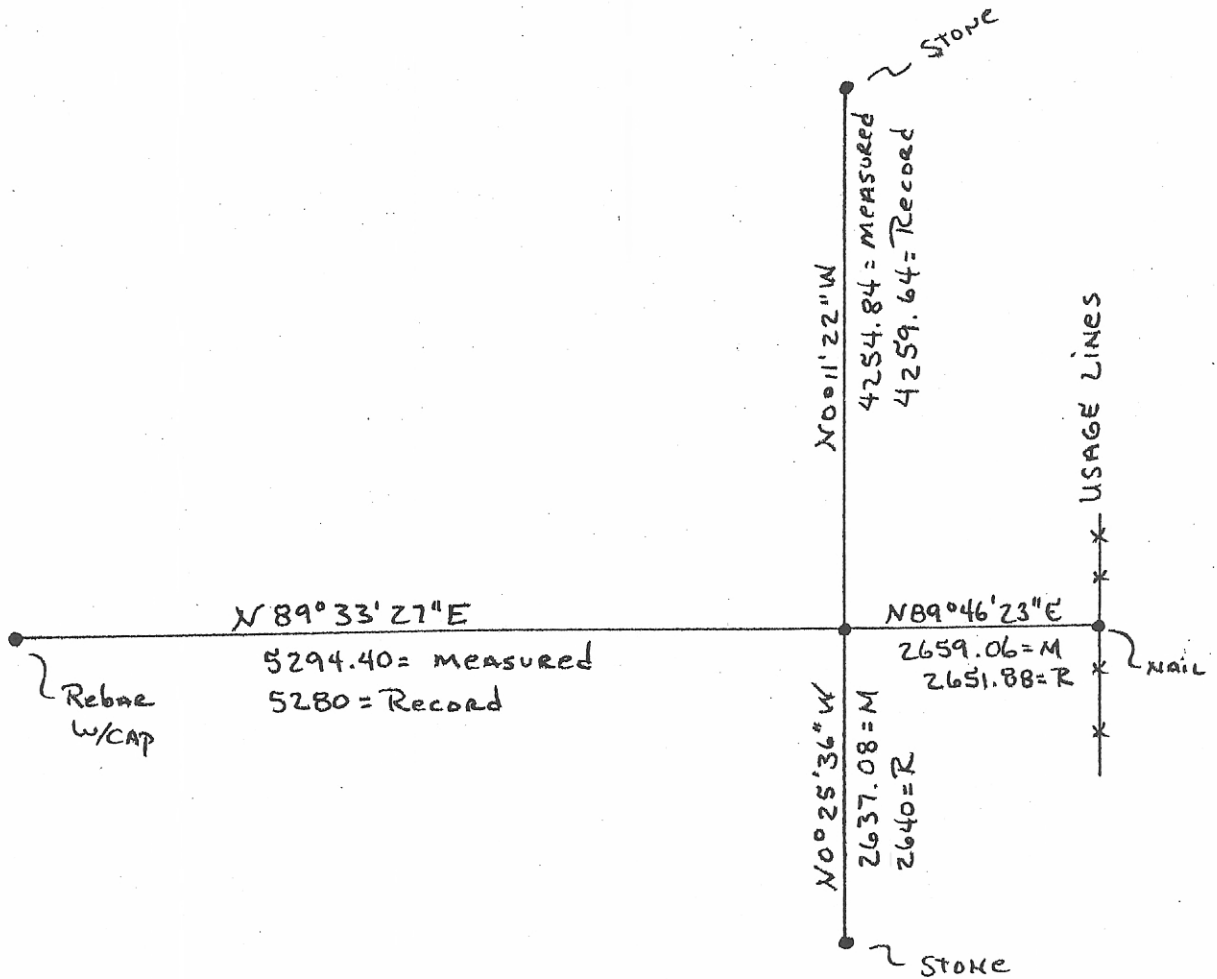
1. Original and/or subsequent record used to evaluate the corner position.
2. Description of evidence found, note discrepancies in the record, state method of establishing lost or obliterated corners.
3. Description of monument and accessories set to perpetuate the corner position.
4. Sketch of corner, show all pertinent data which can best be shown in a sketch example, corner marking, topography ties, position of accessories, etc.
5. Certification must be signed and sealed by Land Surveyor registered in the State of Montana.
6. Fill in Cross Index & Section Diagram at bottom of sheet.

CERTIFIED CORNER RECORDATION

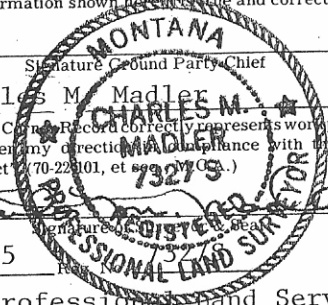
SOUTHEAST SECTION CORNER
 Corner SECTION 3 T. 7N R. 60E P.M.M. FALLON County

Double proportioned and set a 5/8" x 24" rebar with plastic surveyor's cap marked 7327S PLS in an East-West County Road.

Proportional datum was from original GLO notes; monuments used found with the exception of the usage line to the East of the Section Corner. This usage line was two old North-South fencelines.



CERTIFICATION
 I, Charles M. Madler
 certify the information shown here to be true and correct.
 Signature Ground Party Chief
 I, Charles M. Madler
 certify that this Corner Record correctly represents work performed by me or under my direct supervision in compliance with the "Corner Recordation Act" (70-22301, et seq., M.C.A.)
 Date: 4-23-85
 Employer: Professional Land Services



Office of Clerk and Recorder, County of Fallon. This "corner record" was filed for record on April 25, 1985 at 8:30 AM was noted on the cross-index plat and is assigned page No. 199 in book No. 1 Fee: N/C
Mary Lee Dwyer
 County Official

Sec. 3
