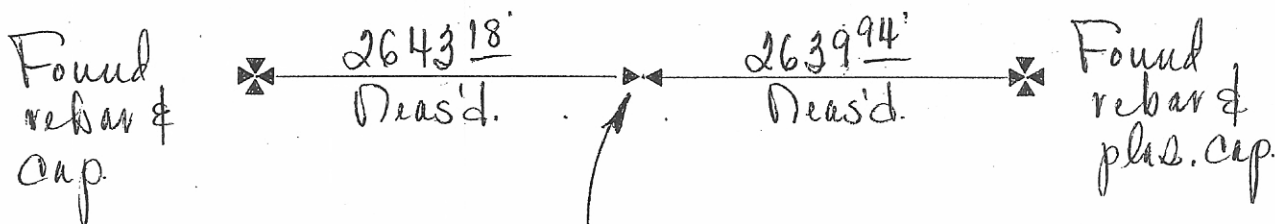


- INSTRUCTIONS**
1. Original and/or subsequent record used to evaluate the corner position.
 2. Description of evidence found, note discrepancies in the record, state method of establishing lost or obliterated corners.
 3. Description of monument and accessories set to perpetuate the corner position.
 4. Sketch of corner, show all pertinent data which can best be shown in a sketch example, corner marking, topography ties, position of accessories, etc.
 5. Certification must be signed and sealed by Land Surveyor registered in the State of Montana.
 6. Fill in Cross Index & Section Diagram at bottom of sheet.

CERTIFIED CORNER RECORDATION

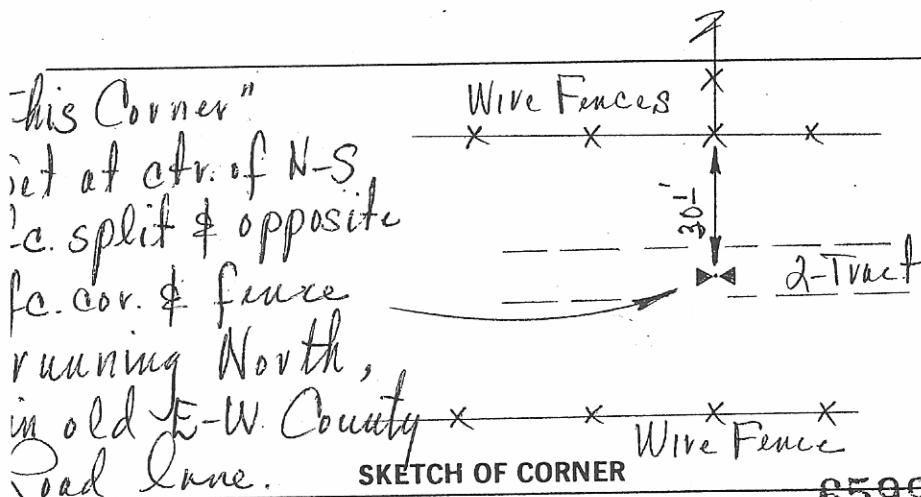
Corner S¹/₄ Corner of Section 25 T. 7 N. R. 60 E. P.M.M. Fallon County

- No existing monuments were found at the S¹/₄ Corner of Section 25.
- Corner was established by fence splits and old E-W County Road lane.



North
↑
No Scale

"This Corner"
Set 5/8" rebar & plus. cap, #4657S,
0.2' deep in ctr. of old E-W
County Road lane.



CERTIFICATION

I, _____ certify the information shown herein is true and correct.

Signature Ground Party Chief

I, **Joe Kehl** certify that this Corner Record correctly represents work performed by me or under my direction in compliance with the "Corner Recordation Act" (70-22-101, et seq., M.C.A.)

Signature of Surveyor & Seal

Date: 11-15-94 No. 4657S

Employer: Joe Kehl & Associates

Office of Clerk and Recorder, County of Fallon. This "corner record" was filed for record on Dec. 7, 1994 at 1:30 P.M. was noted on the cross-index plat and is assigned page No. 555, in book No. 1 Fee: N/C

Nancy Lubitz by Jessie Hayes
County Official Deputy

