

**INSTRUCTIONS**

1. Original and/or subsequent record used to evaluate the corner position.
2. Description of evidence found, note discrepancies in the record, state method of establishing lost or obliterated corners.
3. Description of monument and accessories set to perpetuate the corner position.
4. Sketch of corner, show all pertinent data which can best be shown in a sketch example, corner marking, topography ties, position of accessories, etc.
5. Certification must be signed and sealed by Land Surveyor licensed in the State of Montana.
6. Fill in Cross Index & Section Diagram at bottom of sheet.

**PLSS CORNER RECORD**

Corner 1 MS 7401 T. 8N, R. 6W, P.M.M. Powell County

**Record:**

**1904 - Original G.L.O. Survey by, Robert F. Scott, U.S. Deputy Mineral Surveyor**

I set a granite stone 6 x 8 x 24 ins. deep marked 1-7401 for Cor. No. 1.  
Raised a mound of earth and stone alongside.

**Found:**

Find a granite stone, 4" x 12" x 9" above ground, firmly set and marked '1 7401' on the N. face, and a cross on top.

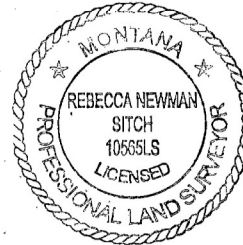
- A dead standing pine tree with a *Land Survey Monument* sign attached bears W. of corner 1 ft.
- A galvanized steel delineator post with *Property Boundary* and *Land Survey Monument* decals attached bears N. of corner 2 ft.
- the centerline of Road No. 1869 bears W. 10 ft.

**Perpetuation:**

- I paint the stone red.
- Set a galvanized steel delineator post with *Property Boundary* and *Land Survey Monument* decals 3 ft. easterly of the corner on Line 1-4.

**Geographic Coordinates**

NAD83(2011)  
46° 26' 33.5737"N  
112° 19' 15.0144"W



**See Diagram on Back**

**CERTIFICATION**

I, Ryan J. Brown  
certify the information shown herein is true and correct.

*[Signature]*  
Signature Ground Party Chief

I, Rebecca Sitch  
certify that this Corner Record correctly represents work performed by me or under my direction in compliance with the "Corner Recordation Act" (70-22-101, et seq., MCA)

*[Signature]*  
Signature of Surveyor & Seal

Date: 4-5-16 Lic. No. 10565LS

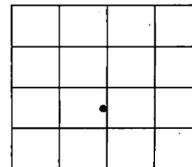
Employer: USDA Forest Service

**SKETCH OF CORNER**

Office of Clerk and Recorder **174259 Fee: \$0.00 Bk Pg**  
record" was filed for record **POWELL COUNTY** Filed **7/14/2016** At **9:20 AM**  
was noted on the cross-index **JODY WALKER, Clk & Rcdr By** *[Signature]*  
**Return To: FILING**

County Official

Sec. 14



Cross Index No. \*\*\* T. 8N R. 6W, PMM

### RETRACEMENT DIAGRAM

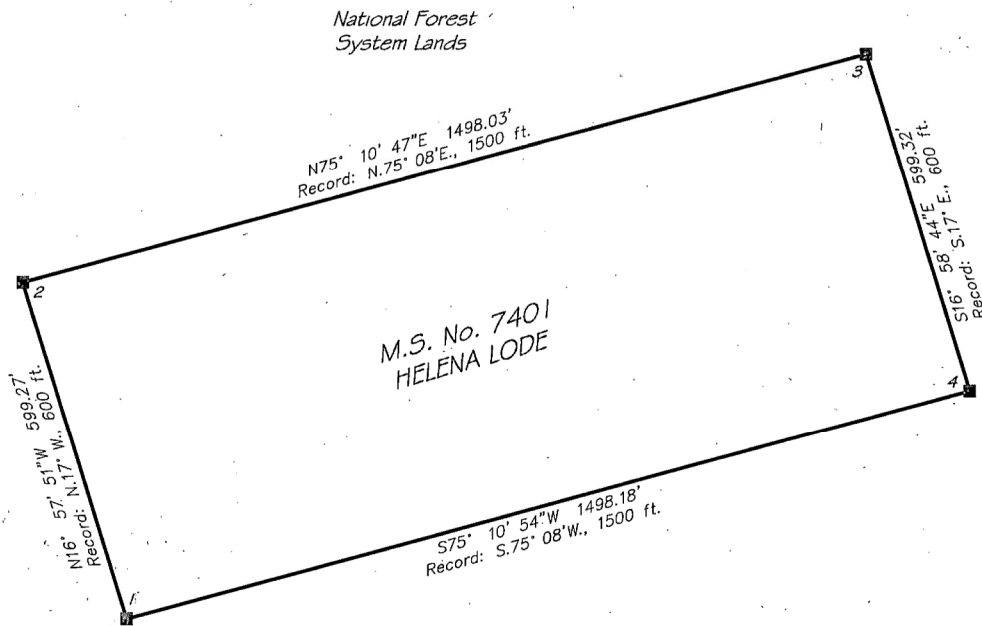
M.S. NO. 7401, LOCATED WITHIN SECTION 14, T.8N., R.6W., PRINCIPAL MERIDIAN, MONTANA  
POWELL COUNTY MONTANA

**BASIS OF BEARINGS:**

Bearings are based upon the geodetic meridian from survey grade GPS observations taken at a random point. A local Transverse Mercator projection was established with an origin at Corner 2 of MS 7401, using a ground scale factor of 1.000334912. At this point, the geodetic forward bearing equals the grid bearing.

**METHOD OF SURVEY:**

This survey was performed using a survey grade Global Positioning System (GPS), utilizing real-time kinematic radial survey techniques. Redundant measurements were taken on project controlling corners to ensure accuracy.

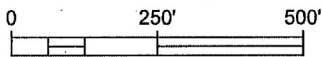


National Forest  
System Lands



**LEGEND**

- NFS Boundary Marked/Maintained
- Found Original Stone
- Record Record Measurement from 1904 Original Survey by Robert F. Scott



U.S. DEPARTMENT OF AGRICULTURE  
HELENA-LEWIS & CLARK NATIONAL FOREST  
FOREST SERVICE, REGION 1

REVIEWED BY:

*Rebecca Sitch*  
FOREST LAND SURVEYOR

4-5-16  
DATE

SURVEYED BY: B.Sitch, R. Brown- June 2015  
DRAWN BY: R. Brown - April 2016

### RETRACEMENT DIAGRAM

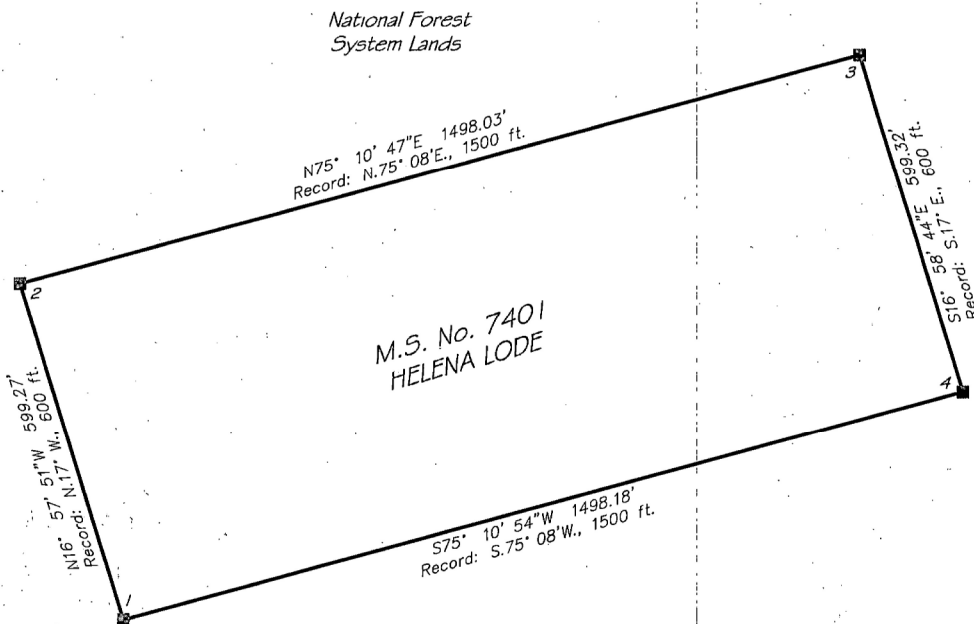
M.S. NO. 7401, LOCATED WITHIN SECTION 14, T.8N., R.6W., PRINCIPAL MERIDIAN, MONTANA  
POWELL COUNTY MONTANA

**BASIS OF BEARINGS:**

Bearings are based upon the geodetic meridian from survey grade GPS observations taken at a random point. A local Transverse Mercator projection was established with an origin at Corner 2 of MS 7401, using a ground scale factor of 1.000334912. At this point, the geodetic forward bearing equals the grid bearing.

**METHOD OF SURVEY:**

This survey was performed using a survey grade Global Positioning System (GPS), utilizing real-time kinematic radial survey techniques. Redundant measurements were taken on project controlling corners to ensure accuracy.

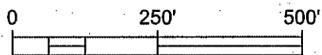


National Forest System Lands



**LEGEND**

- NFS Boundary Marked/Maintained
- Found Original Stone
- Record Record Measurement from 1904 Original Survey by Robert F. Scott



U.S. DEPARTMENT OF AGRICULTURE  
HELENA-LEWIS & CLARK NATIONAL FOREST  
FOREST SERVICE, REGION 1

REVIEWED BY:

*Rebecca Sitch*  
FOREST LAND SURVEYOR

4-5-16  
DATE

SURVEYED BY: B.Sitch, R. Brown - June 2015  
DRAWN BY: R. Brown - April 2016