

INS, IONS

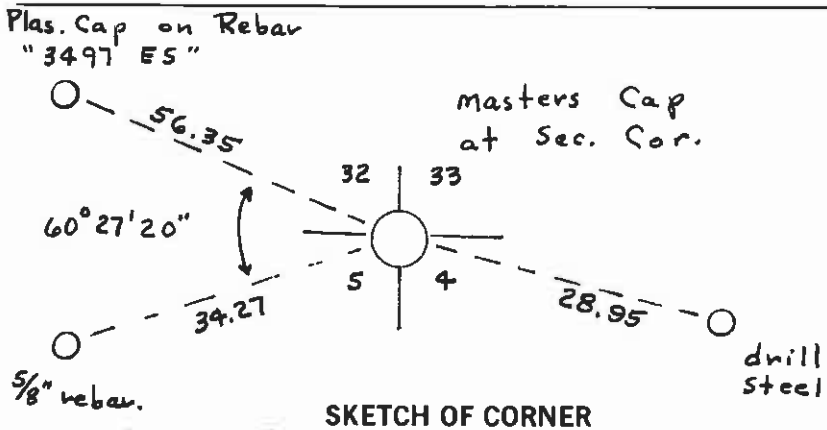
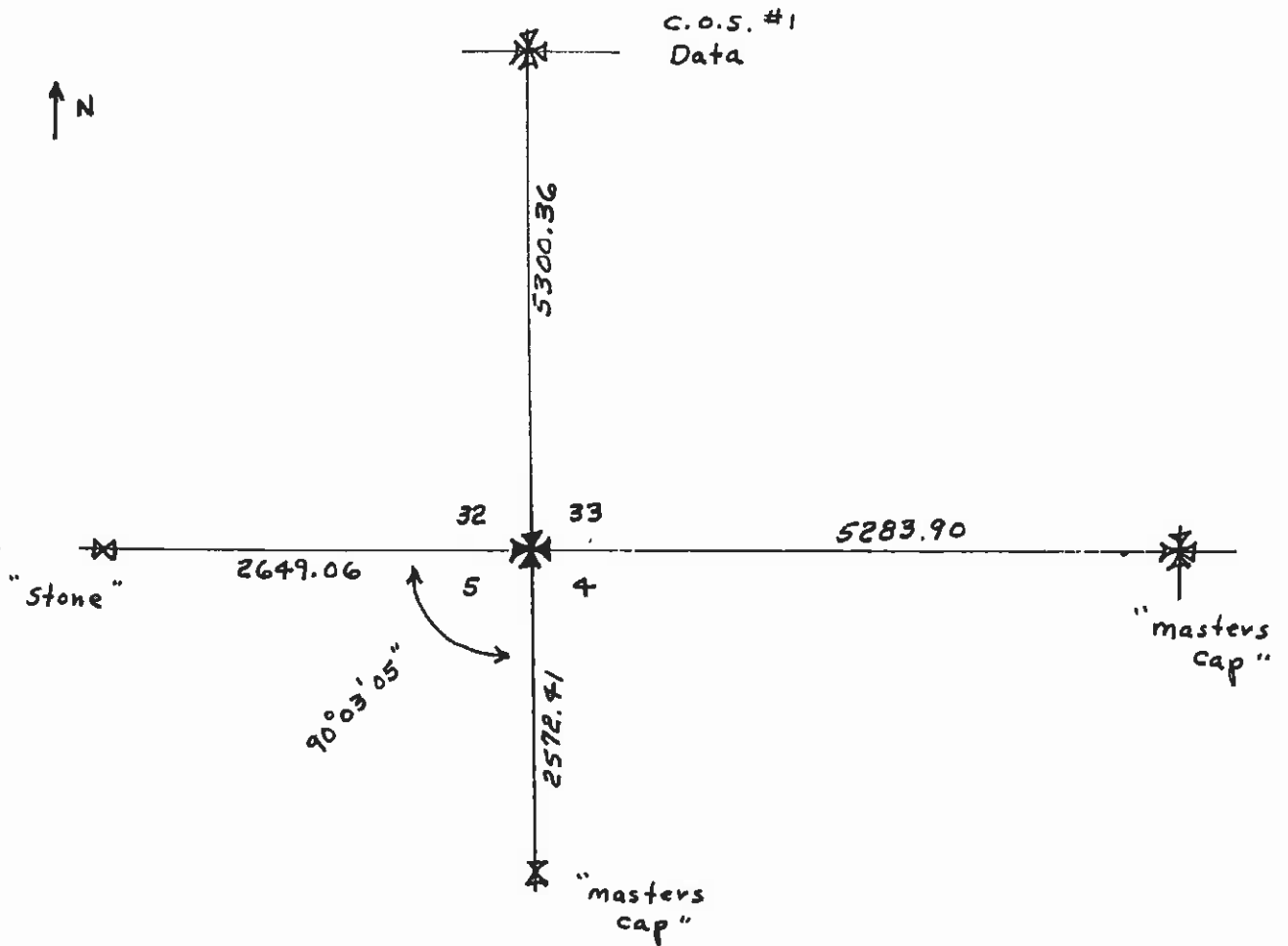
1. Original and/or subsequent record used to evaluate the corner position.
2. Description of evidence found, note discrepancies in the record, state method of establishing lost or obliterated corners.
3. Description of monument and accessories set to perpetuate the corner position.
4. Sketch of corner, show all pertinent data which can best be shown in a sketch example, corner marking, topography ties, position of accessories, etc.
5. Certification must be signed and sealed by Land Surveyor registered in the State of Montana.
6. Fill in Cross Index & Section Diagram at bottom of sheet.

**CERTIFIED CORNER RECORDATION**

Corner SW Cor. Sec. 33 T. 8N R. 9W P.M.M. Powell County

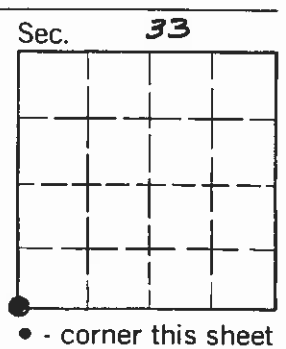
Found steel pin buried 6" in oil mat in Kentucky St. in Deer Lodge.

Replaced with 5/8" x 24" Rebar with 1/4" Plastic Cap stamped "Masters 821 S" at oil mat surface in Kentucky St.



CERTIFICATION  
 I, RAY G. MASTERS  
 certify the information shown herein is true and correct.  
 Signature Ground Party Chief  
 I, RAY G. MASTERS  
 certify that this Corner Record correctly represents work performed by me or under my direction in compliance with the "Corner Recordation Act" (70-22 101, et seq., M.C.A.)  
Ray G. Masters  
 Signature of Surveyor & Seal  
 Date: 11-6-86 Reg. No. 821 S  
 Employer: Self.

Office of Clerk and Recorder, County of Powell. This "corner record" was filed for record on November 6, 1986 @ 3:33 P.M. was noted on the cross-index plat and is assigned page No. \_\_\_\_\_, in book No. \_\_\_\_\_



County Official \_\_\_\_\_  
 Cross Index No. 29 T. 8N R. 9W P.M.M.