

INSTRUCTIONS

1. Original and/or subsequent record used to evaluate the corner position.
2. Description of evidence found, note discrepancies in the record, state method of establishing lost or obliterated corners.
3. Description of monument and accessories set to perpetuate the corner position.
4. Sketch of corner, show all pertinent data which can best be shown in a sketch example, corner marking, topography ties, position of accessories, etc.
5. Certification must be signed and sealed by Land Surveyor registered in the State of Montana.
6. Fill in Cross Index & Section Diagram at bottom of sheet.

CERTIFIED CORNER RECORDATION

Corner 1/4 Sections 9 & 10 T. 8N R. 10W P.M.M. Powell County

ORIGINAL RECORD: (1870 G.L.O.) Set a post from which:
 A fir 15 ins. diam. bears S40°W, 65 lks. (42.90') dist.
 A fir 24 ins. diam. bears S80°E, 52 lks. (34.32') dist.

SUBSEQUENT RECORD: None

EVIDENCE FOUND: Found a 29 inch diam. fir with a face scar which bears S40°W, 42.90' dist. and also found a 27 inch diam. fir with a face scar which bears S80°E, 34.32' dist. The distance-distance intersection from the two record bearing trees also fit the record bearings according to the GLO record. At this position the ground was scraped clean for a half foot down and approximately a 5 foot radius with no sign of the original post.

PERPETUATION: At the record distance-distance intersection from the bearing trees a 3/4"x30" rebar was set 26" in the ground with a 2 1/2" Aluminum Cap stamped as shown in the sketch below. Placed BT tags on the face and Land Survey Attention signs on the back of the BT's.

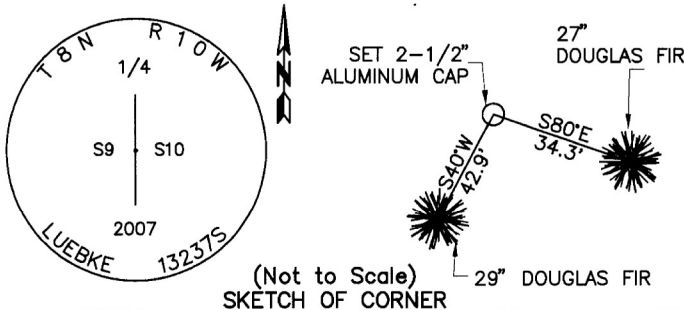
Placed a steel fence post alongside the monument and piled stone around the monument.

The corner falls approximately 150' southeast of and old road on a northwest facing 35% slope with heavy timber.

Date of Survey: November, 2007.

Compass Declination Used: 16°

NAD 83 coordinates for this corner:
 Latitude = 46°27'42.0270"N Longitude = 112°50'55.3745"W
 NOTE: These coordinates are to be used as a search tool only.



CERTIFICATION

I, Steve Cummings
 certify the information shown herein is true and correct.

Signature Ground Party Chief

I, Kurt A. Luebke
 certify that this Corner Record correctly represents work performed by me or under my direction in compliance with the "Corner Recordation Act" (70-22-10), et seq., M.C.A.

Kurt A. Luebke
 Signature of Surveyor & Seal

Date: 11-8-07 Reg. No. 13237 S

Employer: DJ&A P. C.

Office of Clerk and Recorder, County of Powell. This "corner

record" was filed for r# 161343 Fee: \$0.00 Bk Pg _____

was noted on the cross POWELL COUNTY Recorded 11/13/2007 At 8:00 AM
Diane S. Grey, Clk & Rcdr By *Jarita Beckels* n

book No. _____

County Official

Cross Index No. G-13 T. 8N R. 10W PMM

