

CERTIFIED CORNER RECORDATION

Corner NE SECTION 22 T. 8N R. 15E P.M.M. WHEATLAND County

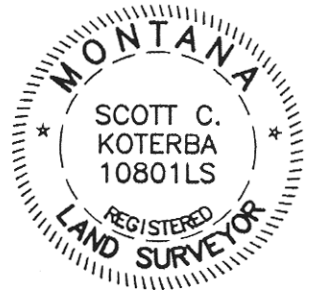
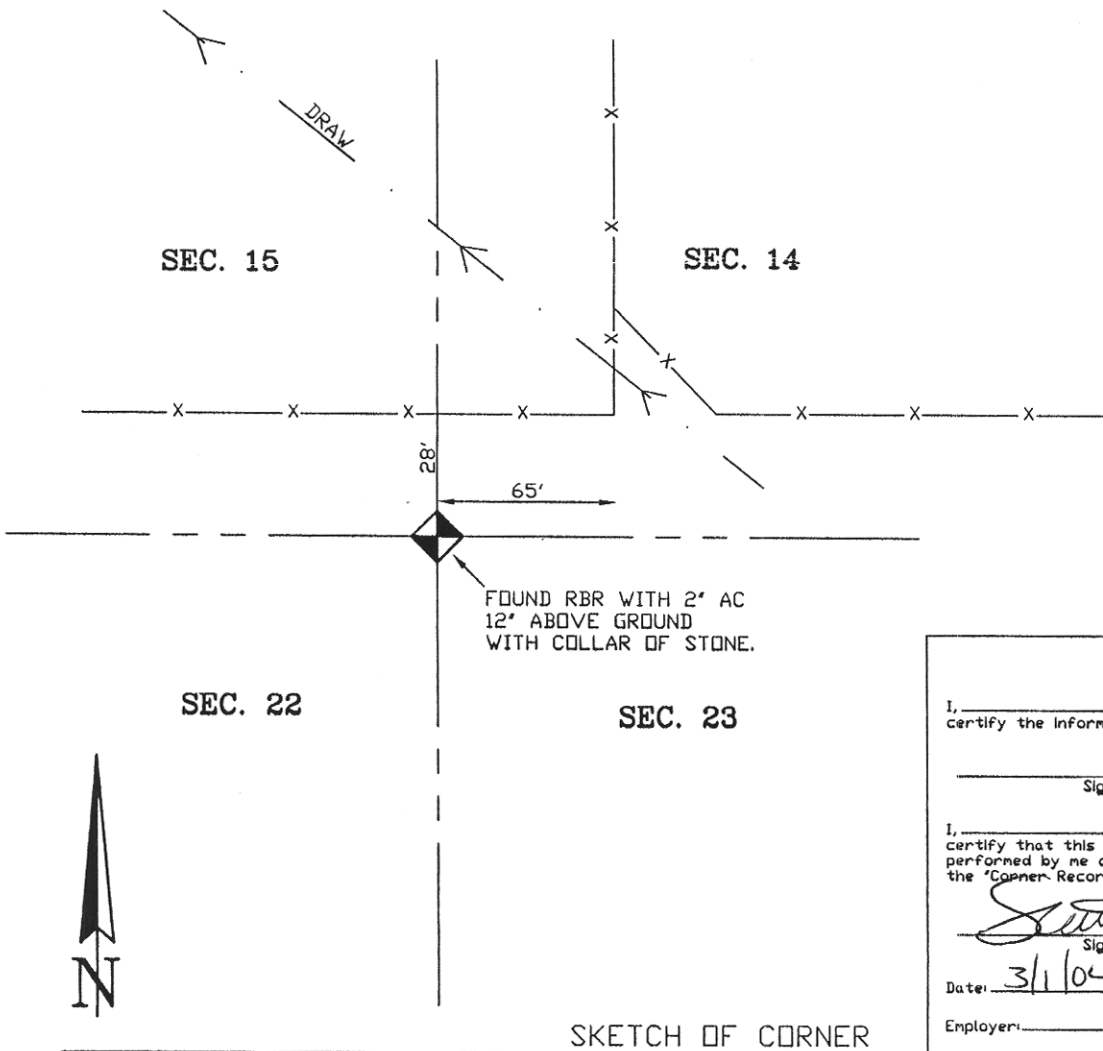
ORIGINAL RECORD: Unknown

SUBSEQUENT RECORD: The Plat of Hayden Park Subdivision refers to a found rebar with a 2" cap (3708 S) at the NW of Section 23 (or NE Section 22). No corner record had been filed for this corner.

EVIDENCE FOUND: (February, 2004) Found a 5/8" rebar 12" above ground with a 2" aluminum cap with no marks except the surveyor's license number. A collar of stone surrounded the monument.

PERPETUATION: (February, 2004) Accepted monument as found. No additional accessories set.

SEE ASSOCIATED CERTIFICATE OF SURVEY



03-533

CERTIFICATION	
I, _____	certify the information shown herein is true and correct.
_____ Signature Ground Party Chief	
I, <u>Scott C. Koterba</u>	
certify that this Corner Record correctly represents work performed by me or under my direction in compliance with the 'Corner Recordation Act' (70-22-101, et seq., M.C.A.)	
_____ Signature of Surveyor & Seal	
Date: <u>3/1/04</u>	Reg. No. <u>10801 LS</u>
Employer: _____ Milestone Surveying	

Office of Clerk and Recorder, County of Wheatland. This 'corner record' was filed for record on March 8, 2004 was noted on the cross-index plat and is assigned page No. 245, in document book No. 102491

Tiffany Smart
County Official

Cross Index No. N17 T. 8N R. 15E P.M.M.

Sec. 22

• corner this sheet