

# CERTIFIED CORNER RECORDATION

Corner 14, 13  
23, 24 T. 8 N. R. 15 E. P.M.M. WHEATLAND County

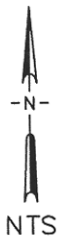
**Original Record:** Set a sandstone 22x12x3 ins, 15 ins in the ground for cor. to Sec 13, 14, 23 & 24. Marked with 3 notches on S. and 1 notch on east edges.  
(Walter W. deLacy)  
(David E. Folsom)  
1874

**Subsequent Record:** Hayden Park Subdivision accepted and used a found 1" rebar and refers to a warrant deed, Bk 75, Pg 501 dated August 23, 1961 and pertaining to Tract K100-1 (Malstrom AFB Facility K-1). Deed does not describe monument.

**Evidence Found:** We find a 25.4mm rebar projecting ±12cm. A loose 44x30x9cm sandstone lays 0.8M W. of R/W post, no visible markings.

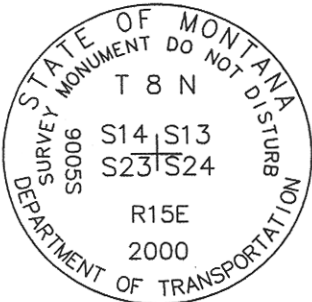
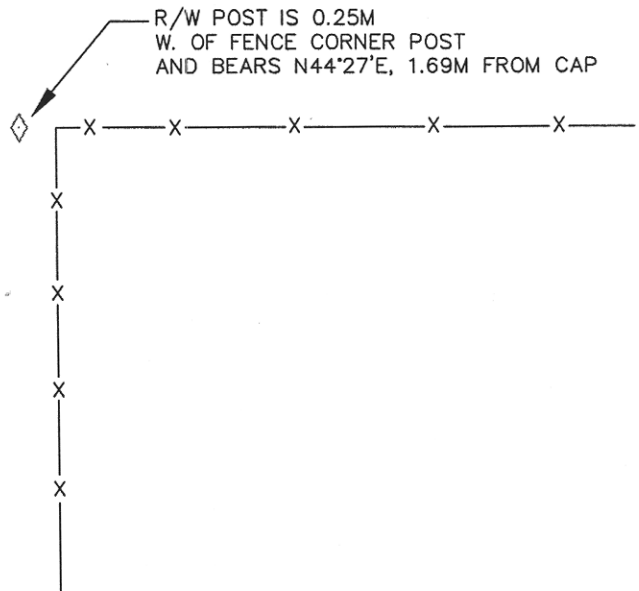
**Perpetuation:** We dig out around rebar to expose 60cm of rebar and place MDT Alum monument over it. Monument projects 15cm. Reset found sandstone on W. side of monument. Stone projects 20cm. Length of rebar is unknown but was still solid after exposing 60cm (ground also was quite frozen).

**NOTE:** \*Bearing and Dist. are based on State Plane Metric NAD 83-1992. To convert Dist. shown (grid) to ground divide by C.A.F. of 0.99922473.



SECTION CORNER IS 1.5M S. & 1.4M W. OF FENCE CORNER

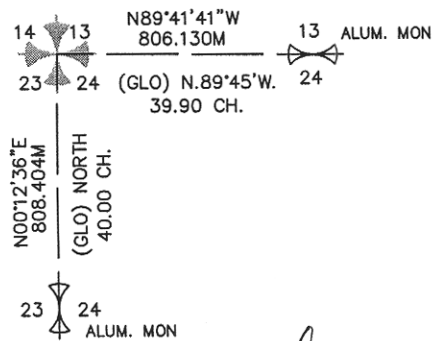
AIR FORCE FACILITY K-1



\* SEE CERTIFICATE OF SURVEY FILED IN CONJUNCTION WITH THIS PROJECT.

LAT 46°26'46.19377"N  
LON 109°47'59.13054"W  
WGS 84

SKETCH OF CORNER



CERTIFICATION

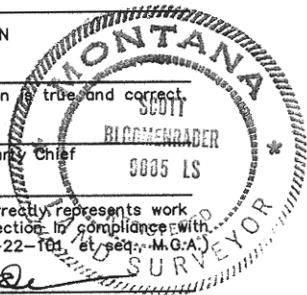
I, \_\_\_\_\_ certify the information shown herein to be true and correct.

Signature Ground Party Chief  
Scott Bloomenrader  
9005 LS

I, Scott Bloomenrader certify that this Corner Record correctly represents work performed by me or under my direction in compliance with the "Corner Recordation Act" (70-22-101, et seq., M.C.A.)

Signature of Surveyor & Seal  
Scott Bloomenrader

Date: 9/05/2001 Reg. No. 9005 LS  
Employer: HKM Engineering Inc Billings, MT

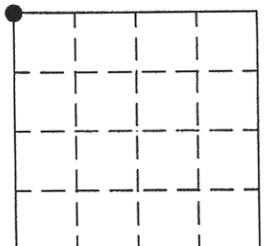


Office of Clerk and Recorder, County of Wheatland. This "corner record" was filed for record on 9-7-01 was noted on the cross-index plat and is assigned page No. 174, in book No. 100874 Tomast County Official

Cross Index No. N-21 T. 8 N. R. 15 E. PMM

Adopted July 1, 1981, Montana Board of Professional Engineers & Land Surveyors

Sec. 24-T8N-R15E



• - corner this sheet