

104440

CERTIFIED CORNER RECORDATION

Corner S 1/4 SECTION 12 T. 8N R. 15E P.M.M. WHEATLAND County

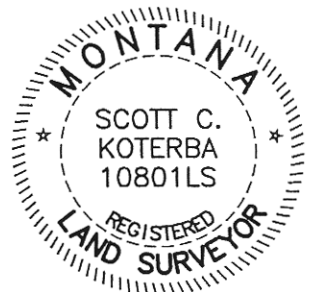
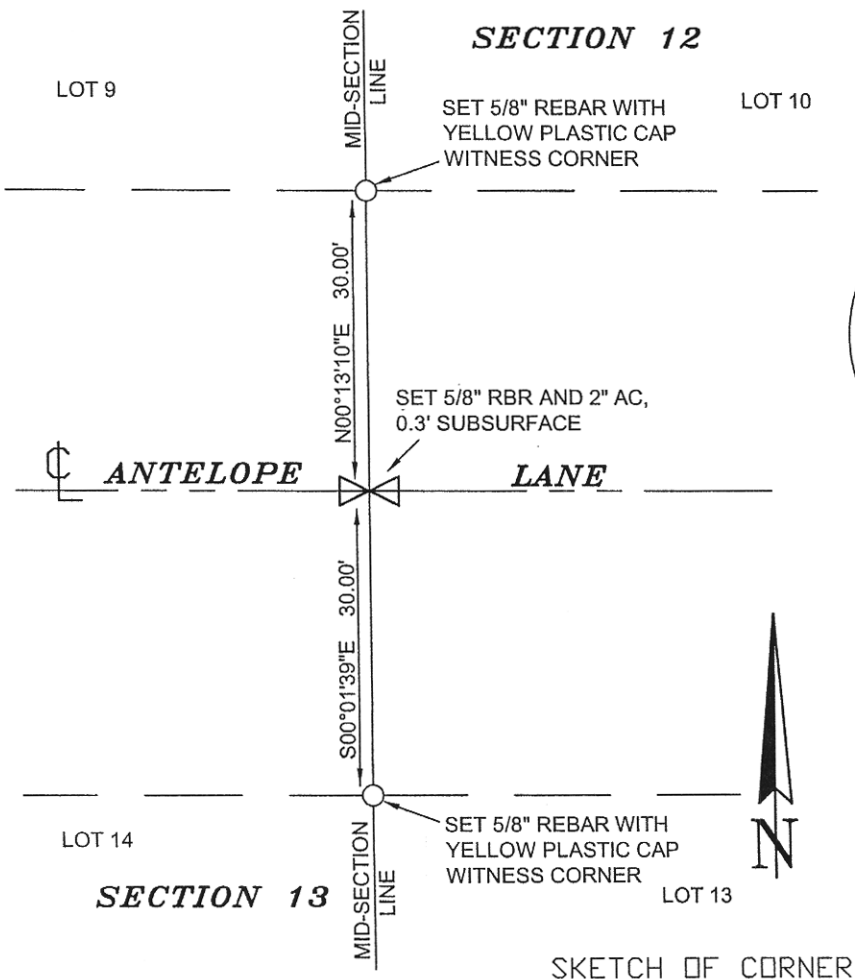
ORIGINAL RECORD: (GLO - DeLacy & Folsom, 1874) Set a sandstone 18 x 11 x 4 in. 12 in. in the ground for 1/4 Sec. Cor. marked 1/4 on N. face.

SUBSEQUENT RECORD: None.

EVIDENCE FOUND: (January, 2007) No original evidence was found. An old East-West county road occupies the area.

PERPETUATION: (February, 2007) At the single proportion position, set a 5/8" rebar and 2" aluminum cap, marked as shown, 0.3' subsurface in a road. Set 5/8" rebar with yellow plastic cap, marked "Milestone Surveying 10801LS" as witness corners on the mid-section line, North and South of the corner.

SEE PLAT OF ANTELOPE SUBDIVISION



06-770

CERTIFICATION

I, _____
certify the information shown herein is true and correct.

Signature Ground Party Chief

Scott C. Koterba

I, _____
certify that this Corner Record correctly represents work performed by me or under my direction in compliance with the "Corner Recordation Act" (70-22-101, et seq., M.C.A.)

Scott C. Koterba
Signature of Surveyor & Seal

Date: 5/25/07 Reg. No. 10801 LS

Employer: Milestone Surveying

SKETCH OF CORNER

Office of Clerk and Recorder, County of Wheatland. This "corner record" was filed for record on May 29, 2007 was noted on the cross-index plat and is assigned page No. 269, in book No. 1 _____ Gwen Brown deputy County Official

Sec. 12

• corner this sheet

104440

Cross Index No. J-23 T. 8N R. 15E PMM