

CERTIFIED CORNER RECORDATION

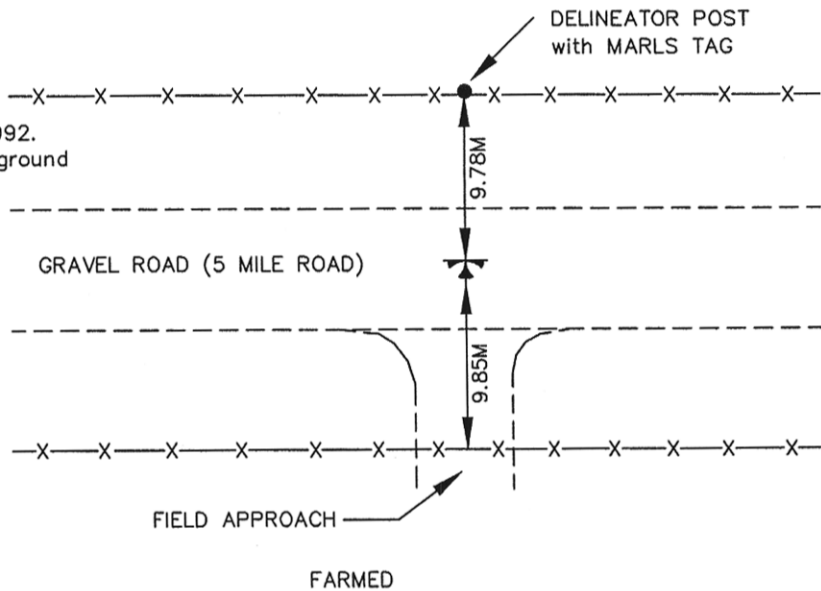
Corner CC
116 T. 8 N. R. 15&16 E. P.M.M. WHEATLAND County

Original Record: Set a sandstone 20x8x7 ins, 13 ins in the ground for closing corner to Township 8N., R15 &16E. Marked CC on S. face with 6 notches on the E., W. and S. edges, and raised a mound of stone 6 ft S. of corner.
(Walter W. deLacy)
(David E. Folsom)
1874

Evidence Found: In centerline of gravel road bed is a small piece of sandstone exposed. We uncover it to find a 40x18x12cm sandstone. Find 6 hash marks on one side only. Stone is weathered and broken in 2 pieces. One of the pieces had a "C" visible on the stone.

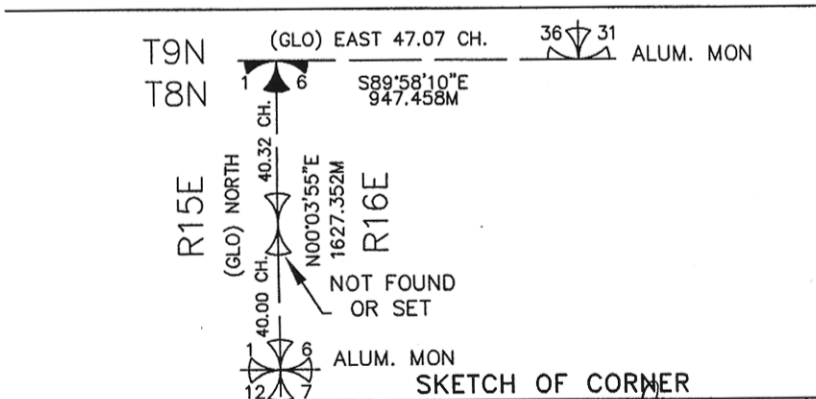
Perpetuation: Set a standard MDT Alum. Monument 15 cm below gravel surface of 5 Mile Rd. Inside of pipe was set a No. 5 x 61cm rebar. Set a MARLS tag and delineator post 9.7m north of the corner and at a E-W fenceline. The pieces of original stone was placed at the base of the delineator post. Cap is stamped as shown.

NOTE: *Bearing and Dist. are based on State Plane Metric NAD 83-1992. To convert Dist. shown (grid) to ground divide by C.A.F. of 0.99922473



* SEE CERTIFICATE OF SURVEY FILED IN CONJUNCTION WITH THIS PROJECT.

LAT 46°29'23.60364"N
LON 109°46'43.95932"W
WGS 84



CERTIFICATION

I, _____ certify the information shown herein is true and correct.

Signature Ground Party Chief SCOTT BLOOMENRADER

I, Scott Bloomenrader certify that this Corner Record correctly represents work performed by me or under my direction in compliance with the "Corner Recordation Act" (70-22-10), et seq., M.C.A.

Signature of Surveyor & Seal [Signature]

Date: 9/05/2001 Reg. No. 9005 LS

Employer: HKM Engineering Inc Billings, MT

Office of Clerk and Recorder, County of Wheatland. This "corner record" was filed for record on 9-7-01 was noted on the cross-index plat and is assigned page No. 163, in book No. 100852 Smart County Official

