

INSTRUCTIONS

1. Original and/or subsequent record used to evaluate the corner position.
2. Description of evidence found, note discrepancies in the record, state method of establishing lost or obliterated corners.
3. Description of monument and accessories set to perpetuate the corner position.
4. Sketch or corner, show all pertinent data which can best be shown in a sketch example, corner marking, topography ties, position of accessories, etc.
5. Certification must be signed and sealed by Registered Land Surveyor in State of Montana.
6. Fill in Cross Index & Section Diagram at bottom of sheet.

CERTIFIED CORNER RECORDATION

Corner N.E. Cor. Sec 23 T. 8N R. 25E P.M.M. Musselshell County

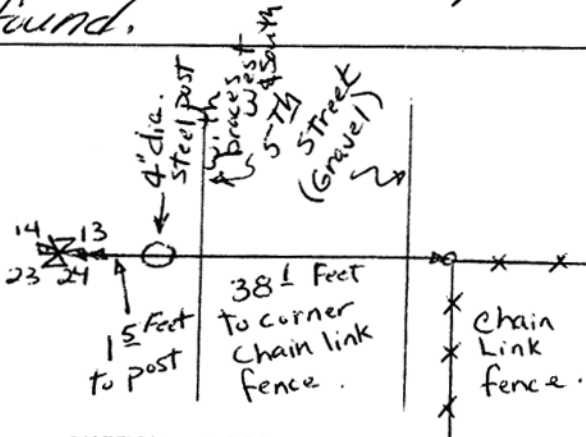
1) original GLO notes (1883) "Set a sandstone 30x16x12 ins 22 ins in the ground for cor to secs 13, 14, 23 & 24 marked 3 notches on S and 1 on E edges, dug pits 18, 18, 12 ins in each section 5 1/2 ft dist and raised a mound of earth 2 ft high, 4 1/2 ft base along side. from which a cottonwood tree 10 ins dia. bears N 20° E 1 ch dist marked T8N R25E S13BT, A cottonwood tree 14" dia. bears N 45° E 4 LKS marked T8N R25E Sec 14 BT. No other trees within limits

GLO Dependent Resurvey (1943) the point for the orig. cor. of sec 13, 14, 23 & 24 falls on waste dump of slate & coal 3' layer from the Bair-Collins mine about 8 ft deep over the orig. surface of the ground. No trace of the original cor. or bearing trees was found. the point for the corner was determined by measuring the record bearing & dist from the city monument at the corner of West 1st Ave and 5th street in the city of Roundup, Montana, as found recorded on the plat of the Nelson's Second Addition on file in the office of the County Clerk & Recorder of Musselshell County, Mt. This position was checked by ties to the railroad and other points as shown on the above mentioned plat. set iron post 3 ft. long 2 ins diam. 30 ins in slate stone and fine coal with brass cap marked

T 8N	R 25E
S 14	S 13
S 23	S 24

1943 New bearing trees: Cottonwood 32 in. dia bears S 56° 15' E 47.85 ft. marked T8N R25E S24BT
a cotton wood 30 ins diam. bears N 140° 30' W 33.86 ft. marked T8N R25E S14BT. (remainder of ties unreadable)

2.) No evidence of the original or dependent resurvey was found. (See Back)



SKETCH OF CORNER

CERTIFICATION

I, Dan Kenczka
certify the information shown herein is true and correct.

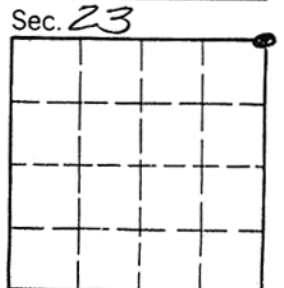
Don Kenghi
Signature Ground Party Chief

Jack R. Fisher
Signature of Surveyor & Seal

Date: _____ Reg. No. 6013(S)
Employer: Thomas Dean & Hoskins

ce of Clerk and Recorder, County of Musselshell. This "corner record" was filed for record on the February 14 day of 1980, was noted on the cross-index plat and is assigned page No. _____, in book No. _____

Frances L. Dawson
County Official



a search for corners set during the GLO dependent resurvey yielded the $\frac{1}{4}$ corners to the South and ~~west~~ East and the $\frac{1}{16}$ th corner to the east. the $\frac{1}{4}$ to the west was also located. the N-S Section line is also the center line of 5th street extended. Examination of all found control provided the most probable location of the corner as an extension of the line thru the N $\frac{1}{4}$ corner & $\frac{1}{16}$ th corner westerly a distance proportionate to the distance between those two found Brass Caps.

A MODH Alum cap marked was set at the location of the section corner.

T8N R25E	
514	513
523	524
166135	
1989	