

CERTIFIED CORNER RECORDATION

Corner: Closing Corner Section 1 T. 8N. R. 25E. P.M.M. Musselshell Co.

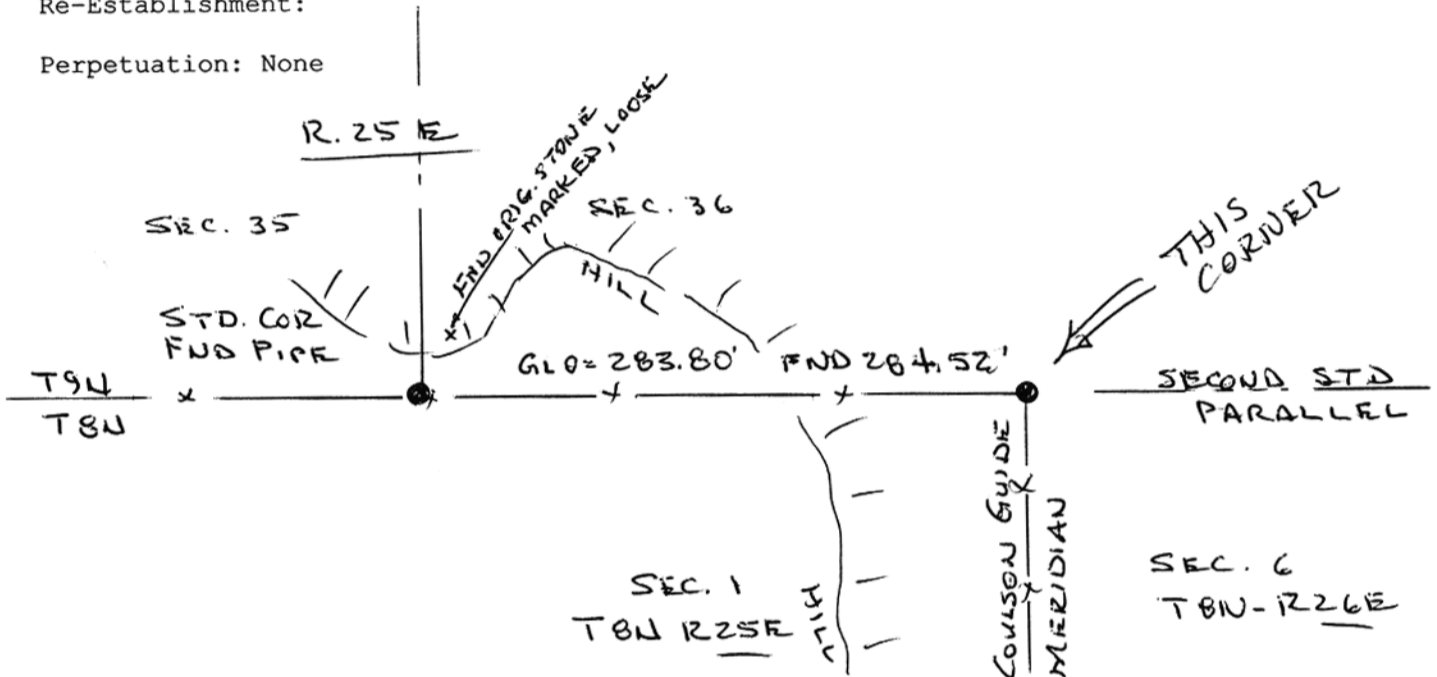
Original Record: 1882 GLO: " Set a sandstone 18x18x6 inches, 12 inches in the ground for the closing corner to T.8N. Range's 25 & 26 E. marked CC with notches on S., E., and W., edges. Dug pits 24x18x12 inches crosswise on each base S. and W. of stone 6 feet distance, and raised a mound of earth 2 1/2 feet high and 5 foot base alongside."

Subsequent Record: None.

Evidence Found: 4/19/04: Found 1" Pipe for the Closing Corner to Section 1 T.8N., R.25E., and Section 6 T.8N. R.26E. at Fence Corner.

Re-Establishment:

Perpetuation: None



03-2020 PN.7163 June 29, 2006 CERTIFICATION

SEE ALSO "DEPENDENT RESURVEY PLAT"
 By Wm. R. BAUDY, JUNE 6, 1961,
 Doc. # 198839, FILED
 Aug. 14, 1978.



I, _____
 Certify the information shown herein is true and correct.

Signature Ground Party Chief _____

I, Daniel W. McGee
 Certify that this Corner Record correctly represents work
 Performed by me or under my direction in compliance with
 The "Corner Recordation Act" (70-22-101, et seq., M.C.A.)

Daniel W. McGee
 Signature of Surveyor & Seal

Date: OCT. 2006 Reg. No. 5157 S

Employer: MCGEE AND COMPANY, Inc

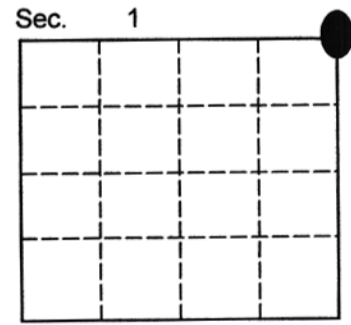
SKETCH OF CORNER

Office 264508 Fee \$.00
 Record' MUSSELSHELL COUNTY
 Recorded 10/16/2006 At 08:14 AM
 Was not Jane E Mang. Clerk and Recorder
 book No By Judith B Hawkins Deputy

This "corner

 _____, in

County Official



Cross Index No. A-1 8N R. 25E P.M.M.

● - corner this sheet