

INSTRUCTIONS

Q:CO-STD/152
Created 4/8/92

1. Original and/or subsequent record used to evaluate the corner position.
2. Description of evidence found, note discrepancies in the record, state method of establishing lost or obliterated corners.
3. Description of monument and accessories set to perpetuate the corner position.
4. Sketch of corner, show all pertinent data which can best be shown in a sketch example, corner marking, topography ties, position of accessories, etc.
5. Certification must be signed and sealed by Land Surveyor registered in the State of Montana.
6. Fill in Cross Index & Section Diagram at bottom of sheet.

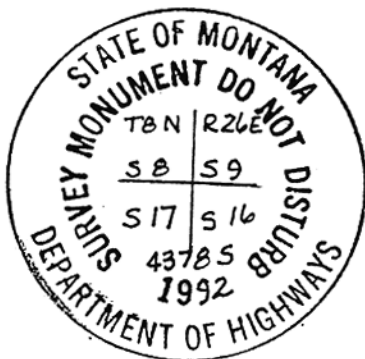
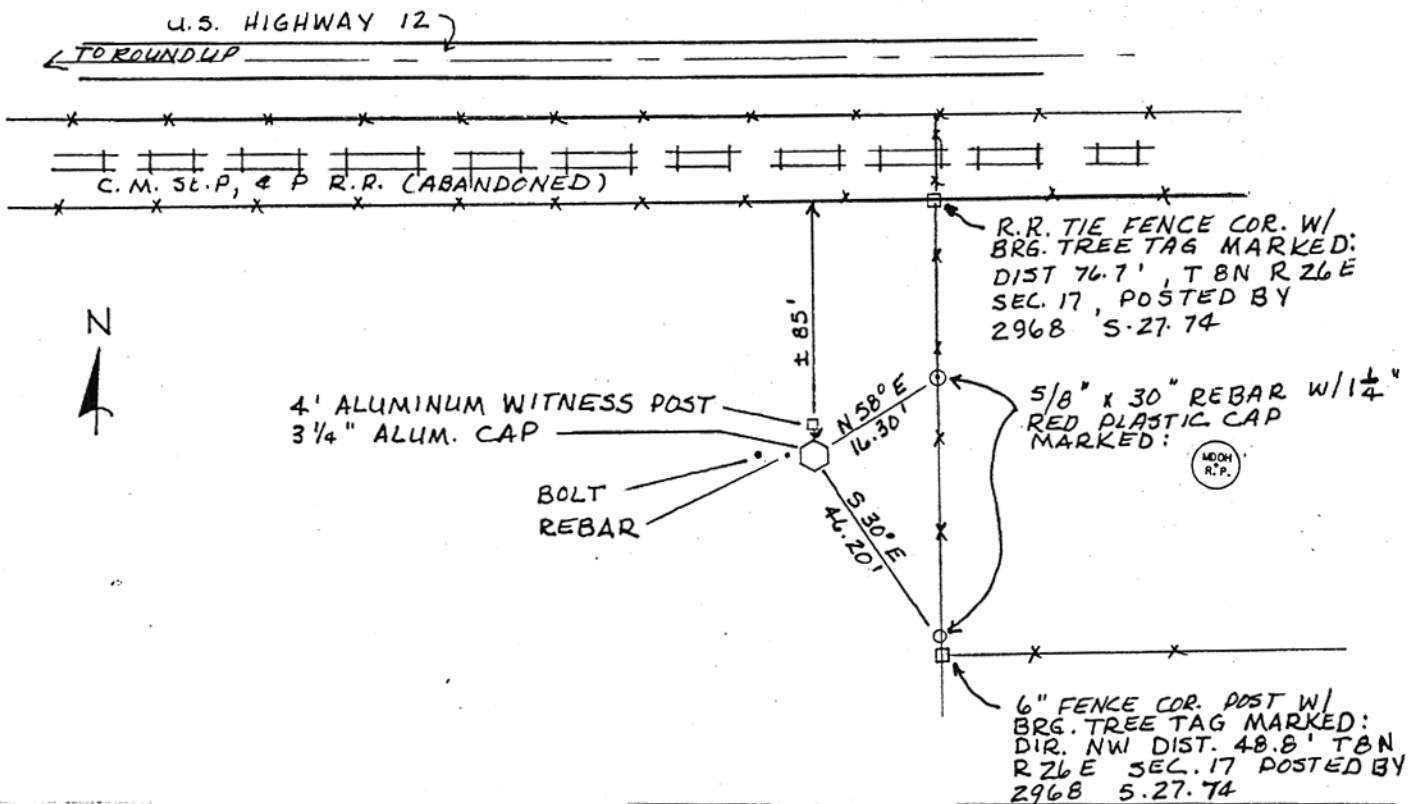
CERTIFIED CORNER RECORDATION

Corner Sections 8,9,16,17 T. 8 N. R. 26 E. P.M.M. MUSSELSHELL County

RECORD: August 1884 - Set a sandstone 10x13x5 ins. 10 ins. in the ground for Cor. to Secs. 8,9,16, & 17 marked 4 notches on East & South edges. Dug pits 18x18x12 ins. in each section 5 1/2 ft. dist. and raised a mound of earth 2 ft. high 4 1/2 ft. base alongside.

FOUND: A sandstone 10x18x5 ins. with a 5/8" rebar 0.65 ft. west of stone and a 2" bolt 0.9 ft. west of stone; 4 notches visible on east edge of stone and 3 notches visible on south edge of stone.

SET: An aluminum monument 30" long, 29 " in the ground, with a 3 1/4" diameter cap. Buried stone at east side of monument. Left rebar and bolt intact. Set reference monuments as shown below.



235218

SKETCH OF CORNER

CERTIFICATION

I, Carole E. Sandin
certify the information shown herein is true and correct.

Carole E. Sandin
Signature of Client

I, David R. Davis
certify that this Corner Record represents work performed by me or under my direction in compliance with the "Corner Recordation Act" (92-101, et seq., M.C.A.)

David R. Davis
Signature of Surveyor

Date: 11-16-92 Reg. No. 43785

Employer: MDT

Sec. 16

Office of Clerk and Recorder, County of Mshl.. This "corner record" was filed for record on 12-11-92 @ 8:55 A.M.

was noted on the cross-index plat and is assigned page No. _____, in book No. _____
JANE E. MANG / Glenda Jensen, Dep.
County Official

Cross Index No. J-9 T. 8 N. R. 26 E. PMM

• - Corner this sheet