

CERTIFIED CORNER RECORDATION

Corner: Closing Corner Section 6 T. 8N. R. 26E. P.M.M. Musselshell Co.

Original Record: 1884 GLO: "Intersect the 2nd Standard Parallel 2.10 chains E. of Standard Corner of T.9N., Range's 25 & 26. Set a sandstone 18x14x4 inches, 10 inches in the ground for the closing corner to sections 5 & 6 marked CC, with 5 notches on the East and 1 notch on the W. edges, raised a mound of stone alongside, Pits impracticable."

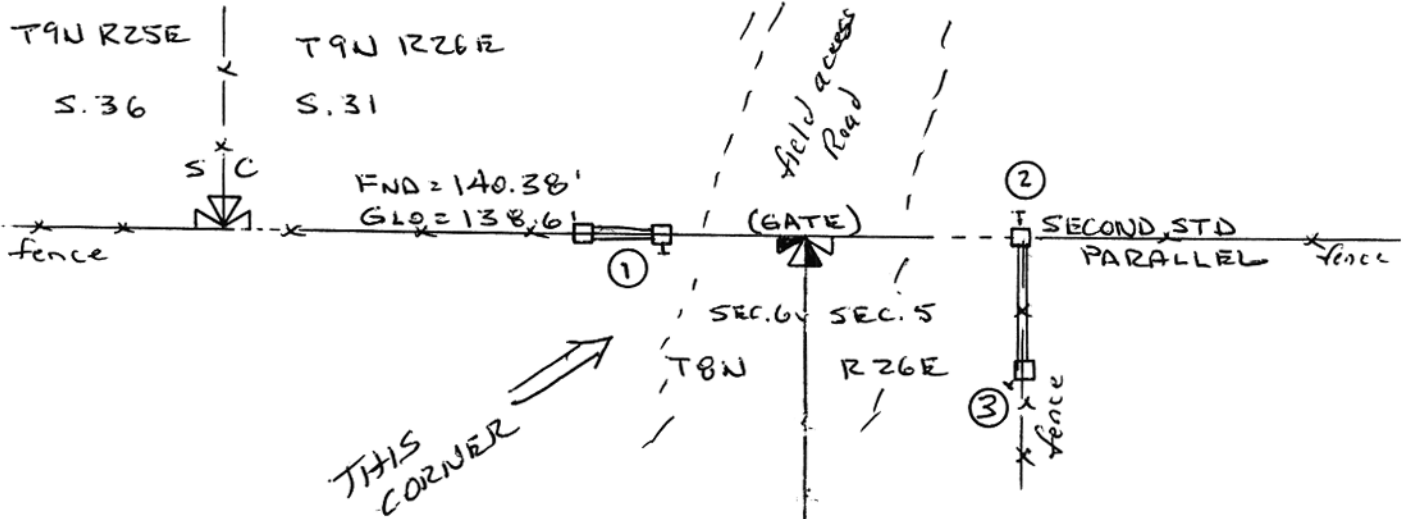
Subsequent Record: COS 1978-26 by Fisher

Evidence Found: None.

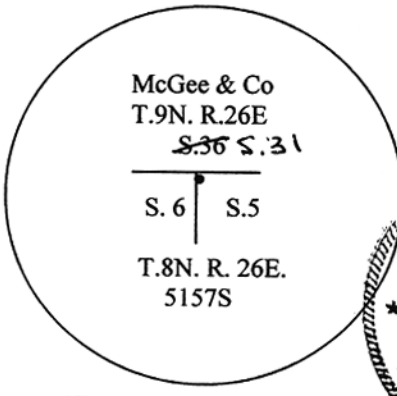
Re-Establishment: Section Corner established at proportional distance on arc of 2nd Standard parallel.

Perpetuation: To perpetuate this monument, we set, 3/4 x 30" rebar with 3 1/4 aluminum cap 1" below ground at the Center line Gate in field access road, marked as shown below, and established the following references.

1. Set a 40d spike with flagging 1.2 feet above ground 8.27 feet West of 1/4 corner with MARLS tag.
2. Set a 40d spike with flagging 1.2 feet above ground, 7.35 feet East of 1/4 corner with MARLS tag.
3. Set a 40d spike with flagging 1.2 feet above ground, 12.25 feet SE of 1/4 corner.



03-2020 PN.7576 June 29, 2006
CERTIFICATION



SKETCH OF CORNER



I, _____
Certify the information shown herein is true and correct.

Signature Ground Party Chief

I, Daniel W. McGee
Certify that this Corner Record correctly represents work Performed by me or under my direction in compliance with The "Corner Recordation Act" (70-22-101, et seq., M.C.A.)

Daniel W. McGee
Signature of Surveyor Seal

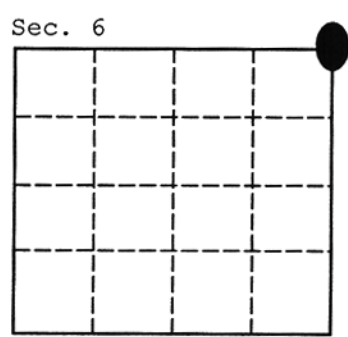
Date: OCT. 2006 Reg. No. 5157 S

Employer: MCGEE AND COMPANY, Inc

Office of Clerk and Recorder
Record" wa **264509 Fee \$.00**
MUSSELSHELL COUNTY
Recorded 10/16/2006 At 08:16 AM
Was noted **Jane E Mang, Clerk and Recorder**
book No. By *Judith B Hawkins* Deputy

"corner

_____, in



County Official

Cross Index No. A-5 8N R. 26E P.M.M.

● - corner this sheet