

SW 21

186783

Mu

CERTIFIED LAND CORNER RECORDATION

DESCRIPTION OF CORNER EVIDENCE FOUND, AND ORIGINAL RECORD (IF KNOWN)

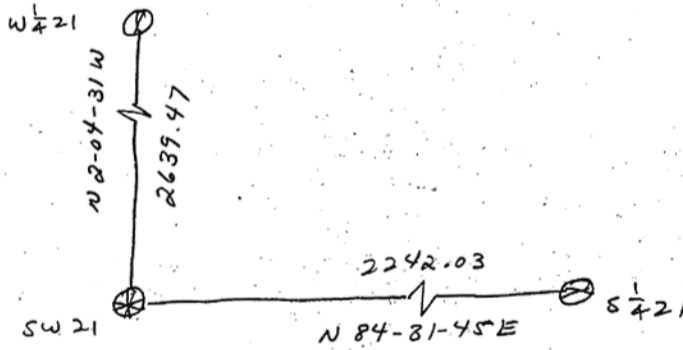
1952 government resurvey calls for brass cap at fence corner - found no trace of brass cap - 2 bearing trees had been cut down and mutilated but were unmistakable

DESCRIPTION OF MONUMENT AND ACCESSORIES ESTABLISHED TO PERPETUATE THE ORIGINAL LOCATION OF THIS CORNER:

Date of work: Oct 1973

reset corner with 1/2" x 24" rebar from bearing tree stumps

SKETCH, WITH COURSE AND DISTANCE TO ADJACENT CORNERS IF DETERMINED IN THIS SURVEY. (MAY SKETCH OR PASTE REPRODUCTION ON REVERSE SIDE.)



Surveyor's Seal



I, Robert M. RYAN certify that the information shown herein is true and correct.

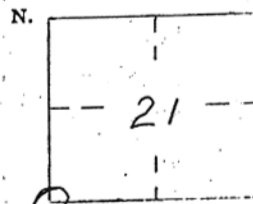
Robert M. Ryan Signature of Ground Party Chief

I, Louis V. Towse certify that I have carefully performed or reviewed the work done on the diagrammed corner as reported on this recordation form and approve the same.

Louis V. Towse Signature of Surveyor

23585 Registration Number

DIAGRAM OF CORNER:



T8N R26E = Corner recorded on the sheet

of Clerk and Recorder, County of Muscellshell

"corner record" was filed for record on the 14 day of December 1973 @ 3:20 PM was noted on the cross-index plat and is

signed page No. in book No.

Frances L. Dawson County Official

Cross Index No. R-9 T. 8 N. R. 26 E Mer.